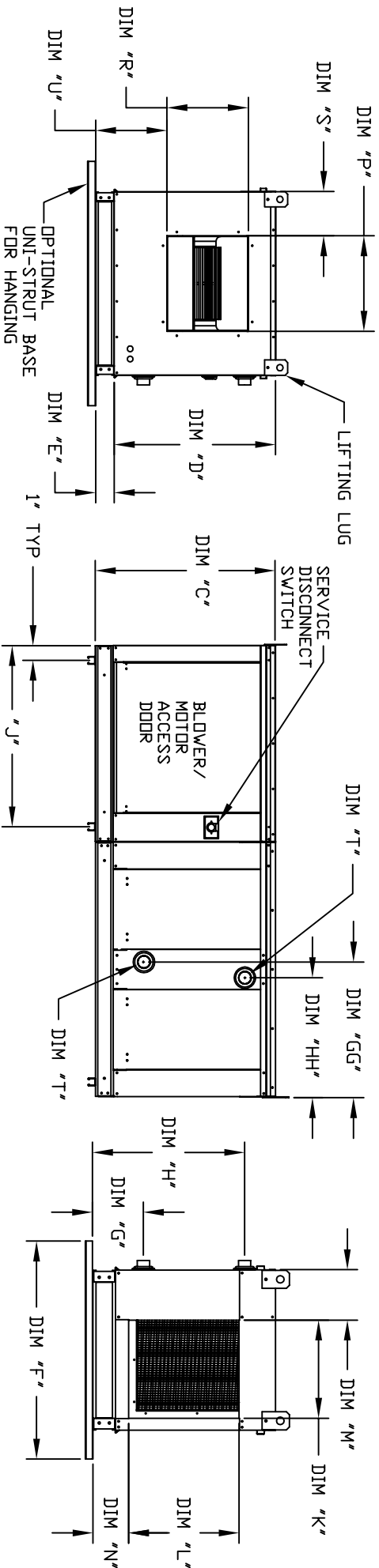
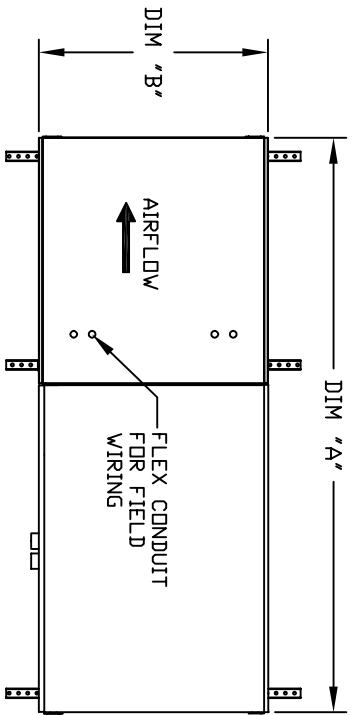


MODULAR INDOOR INLINE BLOWER WITH HEATING COIL



ALL DIMENSIONS ARE NOMINAL AND GIVEN IN INCHES.

MODEL	UNIT DIMENSIONS										INTAKE OPENING										DISCHARGE OPENING									
	A	B	C	D	E	F	J	K	L	M	N	P	R	S	U	N	P	R	S	U	N	P	R	S	U					
G10	74-3/8	27-3/8	29-3/4	26-1/16	3-3/4	36	31-1/8	16	18	8-1/8	5-3/4	13-1/4	11-1/2	6-3/8	11-7/8	5-3/4	13-1/4	11-1/2	6-3/8	11-7/8	5-3/4	13-1/4	11-1/2	6-3/8	11-7/8					
G12	82-3/8	37-3/8	36-3/4	33-1/16	3-3/4	48	39-1/8	22-3/4	24	8-1/8	5-3/4	15-3/4	13-9/16	10-1/8	13-1/16	5-3/4	15-3/4	13-9/16	10-1/8	13-1/16	5-3/4	15-3/4	13-9/16	10-1/8	13-1/16					
G15	82-3/8	37-3/8	36-3/4	33-1/16	3-3/4	48	39-1/8	22-3/4	24	8-1/8	5-3/4	18-3/4	16	8-5/8	14-1/16	5-3/4	18-3/4	16	8-5/8	14-1/16	5-3/4	18-3/4	16	8-5/8	14-1/16					
G18	87-3/8	41-3/8	43-3/8	38-1/16	5-1/4	60	44-1/8	30	30	8-1/8	7-1/2	22	19	9	17-7/8	7-1/2	22	19	9	17-7/8	7-1/2	22	19	9	17-7/8					
G20	118-1/2	48-7/16	51-3/8	46-1/8	5-1/4	60	63-3/16	34	36	10-3/16	7-1/2	24-7/8	24-7/8	11-1/16	19-1/8	7-1/2	24-7/8	24-7/8	11-1/16	19-1/8	7-1/2	24-7/8	24-7/8	11-1/16	19-1/8					
925	128-1/2	59-3/16	58-3/8	53-1/8	5-1/4	72	73-3/16	43	43	10-3/16	7-1/2	31-3/8	31-3/8	13-3/16	21-9/16	7-1/2	31-3/8	31-3/8	13-3/16	21-9/16	7-1/2	31-3/8	31-3/8	13-3/16	21-9/16					

HOT WATER COIL MODULE

STEAM COIL MODULE

MODEL	WEIGHT (LBS)	TOTAL CAPACITY (MBH)	PIPE CONNECTION		G	GG	H	HH	MODEL	WEIGHT (LBS)	TOTAL CAPACITY (MBH)	PIPE CONNECTION		PSI	G	GG	H	HH
			"T" (MP1)	"T" (MP1)								"T" (MP1)	"T" (MP1)					
G10	365	165.63	2	2	8-1/4	22-7/16	24-3/4	19-11/16	G10	365	176.49	2-1/2	2-1/2	5	8-3/4	21-1/16	16-15/16	21-1/16
G12	570	320.88	2	2	8-1/4	22-7/16	28-3/4	19-11/16	G12	570	328.19	2-1/2	2-1/2	5	8-3/4	21-1/16	18-3/8	21-1/16
G15	580	320.88	2	2	8-1/4	22-7/16	28-3/4	19-11/16	G15	580	328.19	2-1/2	2-1/2	5	8-3/4	21-1/16	18-3/8	21-1/16
G18	695	514.97	1-1/2	1-1/2	9-1/2	22-3/16	38	19-15/16	G18	690	505.64	2-1/2	2-1/2	5	10-1/4	21-1/16	23-5/8	21-1/16
G20	1170	831.87	2-1/2	2-1/2	10	28-9/16	45-1/2	25-9/16	G20	1145	812.24	2-1/2	2-1/2	5	10-1/4	27-3/32	28-5/8	27-3/32
925	1630	1230.16	3	3	10-1/4	28-13/16	52-1/4	25-5/16	925	1625	1234.45	2-1/2	2-1/2	5	10-1/4	27-3/32	31-3/4	27-3/32