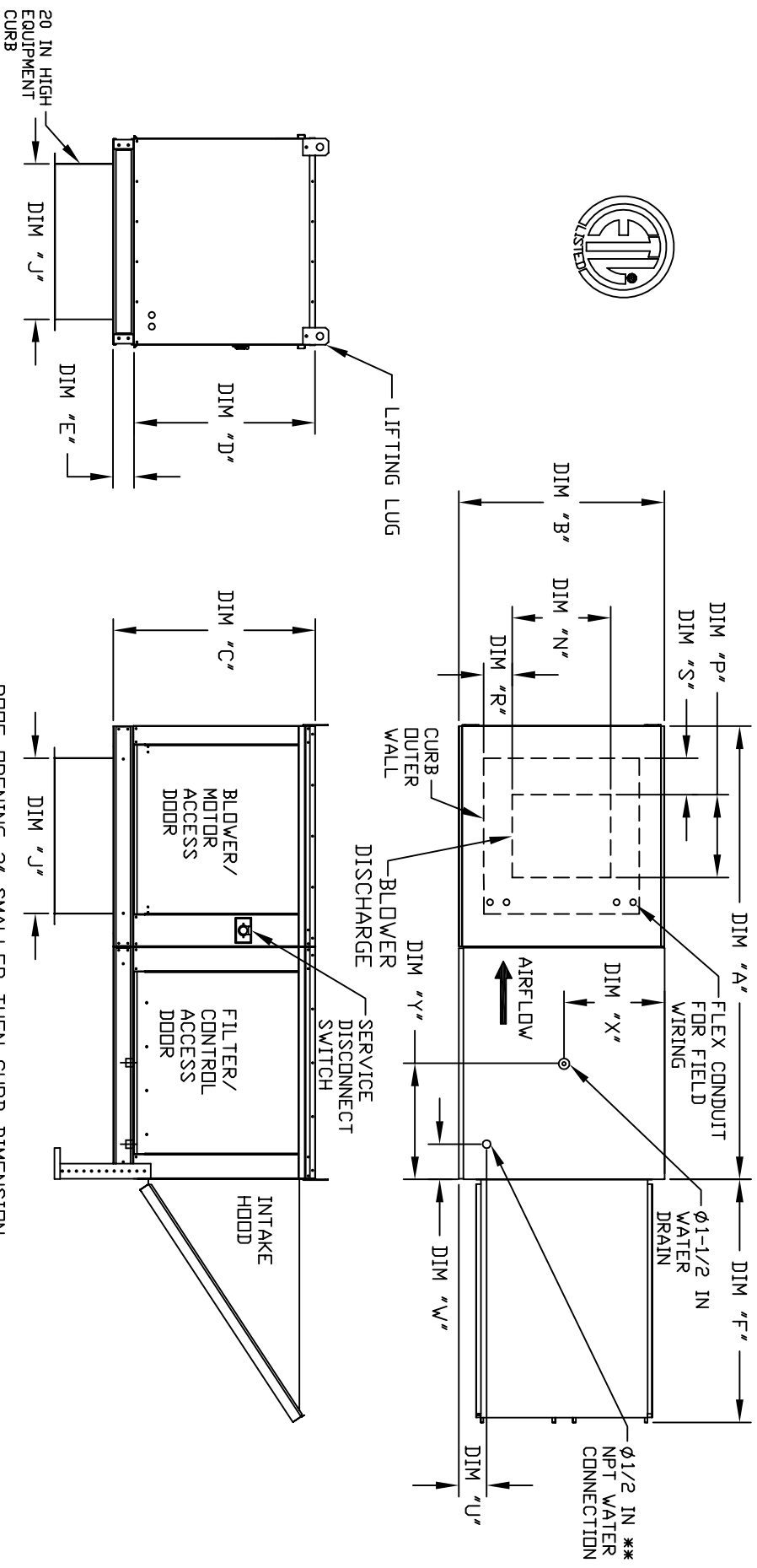


MODULAR OUTDOOR DOWN DISCHARGE BLOWER WITH EVAPORATIVE COOLER AND INTAKE HOOD

REV. #4 10/21/20 THECDM



ALL DIMENSIONS ARE NOMINAL AND GIVEN IN INCHES.

ROOF OPENING 2" SMALLER THEN CURB DIMENSION

MODEL	A	B	C	D	E	F	J	N	P	R	S	U	W	X	Y
G10	64-3/8	27-3/8	29-3/4	26-1/16	3-3/4	44-3/8	21	13-1/4	11-1/2	3-7/8	1-3/4	4-1/2	6-1/4	13	16
G12	72-3/8	37-3/8	36-3/4	33-1/16	3-3/4	53-5/8	31	15-3/4	13-9/16	7-5/8	7-15/16	4-1/2	6-1/4	18	16
G15	72-3/8	37-3/8	36-3/4	33-1/16	3-3/4	53-5/8	31	18-3/4	16	6-1/8	5-1/2	4-1/2	6-1/4	18	16
G18	83-3/8	41-3/8	43-3/8	38-1/16	5-1/4	51-5/8	35	22	19	6-1/2	7	4-1/2	5-3/4	20	19
920	99-9/16	48-7/16	46-1/8	45-1/8	5-1/4	76-3/8	42	24-7/8	24-7/8	8-9/16	1-1/8	4-1/2	5-3/4	23-1/2	17-1/2
925	109-9/16	59-3/16	58-3/8	53-1/8	5-1/4	71-3/8	42	31-3/8	31-3/8	10-11/16	3-13/16	4-1/2	5-3/4	28-7/8	17-1/2

UNIT INFORMATION

MODEL	FILTER SIZE & QTY		MAX. FILTER VELOCITY	STANDARD EVAPORATIVE COOLING UNIT				CELDEK EVAPORATIVE COOLING UNIT										
				TOT. WEIGHT	MEDIA SIZE & QTY	VEL.	MAX. CFM	NOZZLES	MAX. FLOW RATE	TOT. WEIGHT	MEDIA SIZE & QTY	VEL.	MAX. CFM	NOZZLES	MAX. FLOW RATE			
G10	16"x20"x2" (3)	@3500	CFM = 667 FPM	380	LBS	20"x25"x2" (3)	3	406	FPM	6	3	GPH	385	LBS	20"x24"x12"	12	1050	FPM
G12	20"x25"x2" (3)	@5000	CFM = 580 FPM	595	LBS	16"x20"x2" (8)	5	358	FPM	10	5	GPH	590	LBS	25"x32"x12"	20	900	FPM
G15	20"x25"x2" (3)	@6000	CFM = 696 FPM	605	LBS	16"x20"x2" (8)	5	429	FPM	10	5	GPH	600	LBS	25"x32"x12"	20	1080	FPM
G18	16"x20"x2" (6)	@8000	CFM = 762 FPM	765	LBS	20"x25"x2" (8)	8	348	FPM	14	7	GPH	755	LBS	30"x36"x12"	28	1067	FPM
920	16"x20"x2" (10)	@15000	CFM = 857 FPM	1275	LBS	16"x20"x2" (15)	15	572	FPM	24	12	GPH	1245	LBS	38"x43"x12"	35	1322	FPM
925	20"x25"x2" (8)	@22000	CFM = 957 FPM	1735	LBS	16"x25"x2" (12)	12	638	FPM	26	15	GPH	1695	LBS	45"x54"x12"	42	1304	FPM