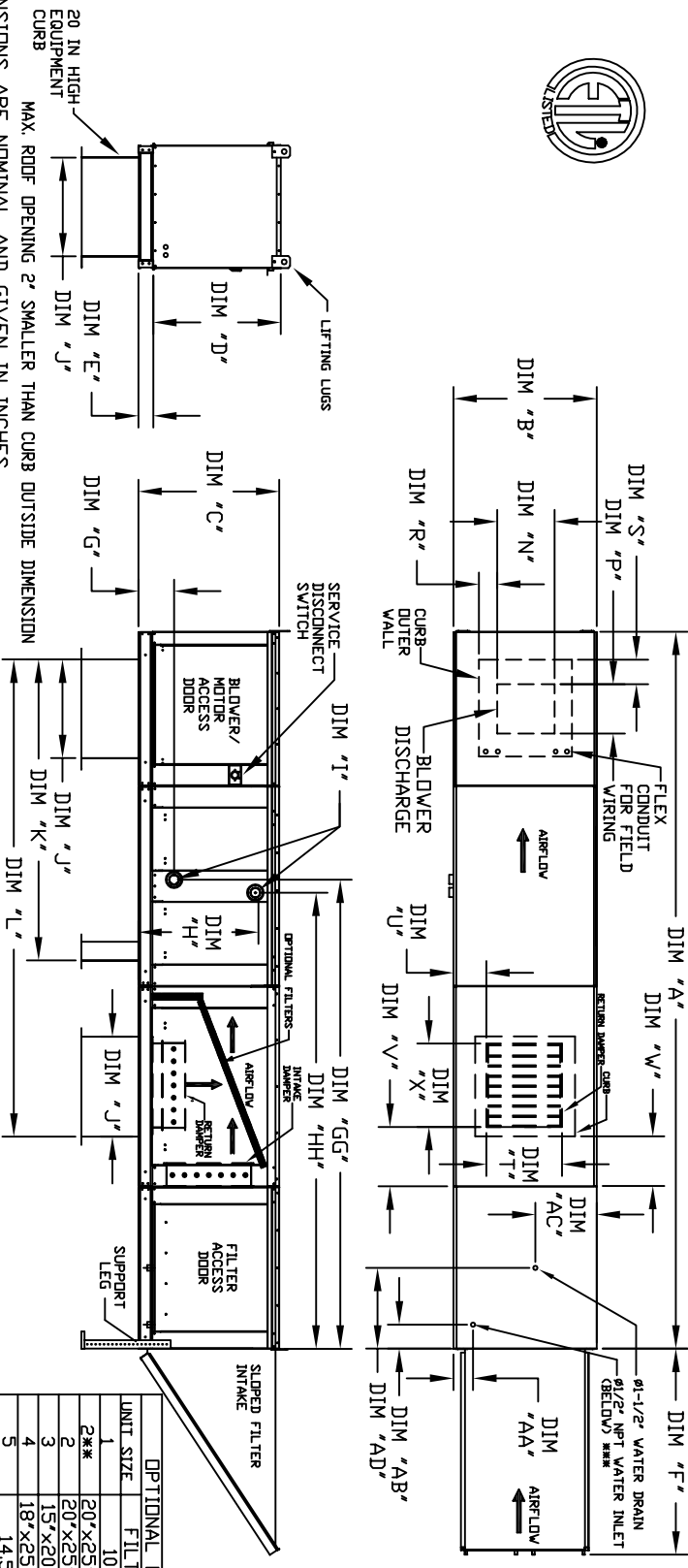




MODULAR OUTDOOR DOWN DISCHARGE BLOWER WITH EVAPORATIVE COOLER, HEATING COIL, MIXING BOX AND INTAKE HOOD

JECHNHCDDMH  
REV#A1 12/1/2016



ALL DIMENSIONS ARE NOMINAL AND GIVEN IN INCHES.

UNIT SIZE	OPTIONAL MIXING BOX FILTERS
1	20"x25"x2" (2), 16"x25"x2" (1)
2**	10"x16"x2" (5)
3	20"x25"x2" (2), 16"x25"x2" (1)
4	15"x20"x2" (4), 15"x15"x2" (2)
5	18"x25"x2" (4), 16"x20"x2" (2)

UNIT SIZE	UNIT DIMENSIONS													DISCHARGE OPENING					RETURN DAMPER OPENING					WATER INLET DRAIN OPENING				
	A	B	C	D	E	F	G	H	I	J	K	L	M	N	P	R	S	T	U	V	W	X	AA	AB	AC	AD		
1	158-7/8	29-3/4	26-1/16	3-3/4	44-3/8	21	65-13/16	98-5/8	13-1/4	11-1/2	3-7/8	1-3/4	8	14	12-1/2	18	4-1/2	6-1/4	13	16	8-3/4	95-9/16	16-15/16	95-9/16	16"x20"x2" (3)	3500 CFM = 667 FPM	16"x20"x2" (3)	3500 CFM = 667 FPM
2**	166-7/8	36-3/4	33-1/16	3-3/4	53-5/8	31	74-5/8	112-9/16	15-3/4	13-9/16	7-5/8	1-15/16	22-3/4	8	11	7-1/2	24-4-1/2	6-1/4	18	16	8-3/4	95-9/16	18-3/8	95-9/16	20"x25"x2" (3)	6000 CFM = 580 FPM	20"x25"x2" (3)	6000 CFM = 580 FPM
3	171-7/8	43-3/8	38-1/16	5-1/4	51-5/8	35	79-3/16	120-1/8	18-3/4	16	6-1/8	5-1/2	22-3/4	8	7	4-1/2	30	4-1/2	20	19	8-3/4	101-9/16	23-5/8	101-9/16	16"x20"x2" (6)	8000 CFM = 762 FPM	16"x20"x2" (6)	8000 CFM = 762 FPM
4	227-1/8	51-3/8	46-1/8	5-1/4	76-3/8	42	104-9/32	153-13/16	24-7/8	24-7/8	8-9/16	1-1/8	33	10	11	9	36	4-1/2	20	17-1/2	10-1/4	116-25/32	28-5/8	116-25/32	16"x20"x2" (10)	15000 CFM = 957 FPM	16"x20"x2" (10)	15000 CFM = 957 FPM
5	237-1/8	58-3/8	53-1/8	5-1/4	71-3/8	52	114-1/4	171-3/8	31-3/8	31-3/8	10-11/16	1-13/16	43	10	11	9	36	4-1/2	20	17-1/2	10-1/4	116-25/32	31-3/4	116-25/32	20"x25"x2" (8)	22000 CFM = 957 FPM	20"x25"x2" (8)	22000 CFM = 957 FPM

UNIT SIZE	TOTAL CAPACITY PIPE CONNECTION			TOTAL CAPACITY (GPH)	TOTAL CAPACITY PIPE CONNECTION			TOTAL CAPACITY (GPH)	TOTAL CAPACITY PIPE CONNECTION			TOTAL CAPACITY (GPH)	TOTAL CAPACITY PIPE CONNECTION			TOTAL CAPACITY (GPH)
	1"	1 1/2"	2"		1"	1 1/2"	2"		1"	1 1/2"	2"		1"	1 1/2"	2"	
1	165.63	2	8-1/4	176.49	1	176.49	2	8-1/4	176.49	5	8-3/4	95-9/16	16-15/16	95-9/16	16"x20"x2" (3)	3500 CFM = 667 FPM
2**	320.88	2	8-1/4	328.19	2**	328.19	2	8-1/4	328.19	5	8-3/4	95-9/16	18-3/8	95-9/16	20"x25"x2" (3)	6000 CFM = 580 FPM
3	514.97	2	9-1/2	505.64	3	505.64	2	9-1/2	505.64	5	10-1/4	101-9/16	23-5/8	101-9/16	16"x20"x2" (6)	8000 CFM = 762 FPM
4	831.87	2-1/2	10	812.24	4	812.24	2-1/2	10	812.24	5	10-1/4	116-25/32	28-5/8	116-25/32	16"x20"x2" (10)	15000 CFM = 957 FPM
5	1230.16	3	10-1/4	1234.45	5	1234.45	3	10-1/4	1234.45	5	10-1/4	116-25/32	31-3/4	116-25/32	20"x25"x2" (8)	22000 CFM = 957 FPM

\*\* DIMENSIONS APPLY TO UNITS WITH G12 BLOWERS ONLY  
\*\*\* MAX. CAP. EVAP. WATER DISCHARGE - 50 GPM @ 70 FPM