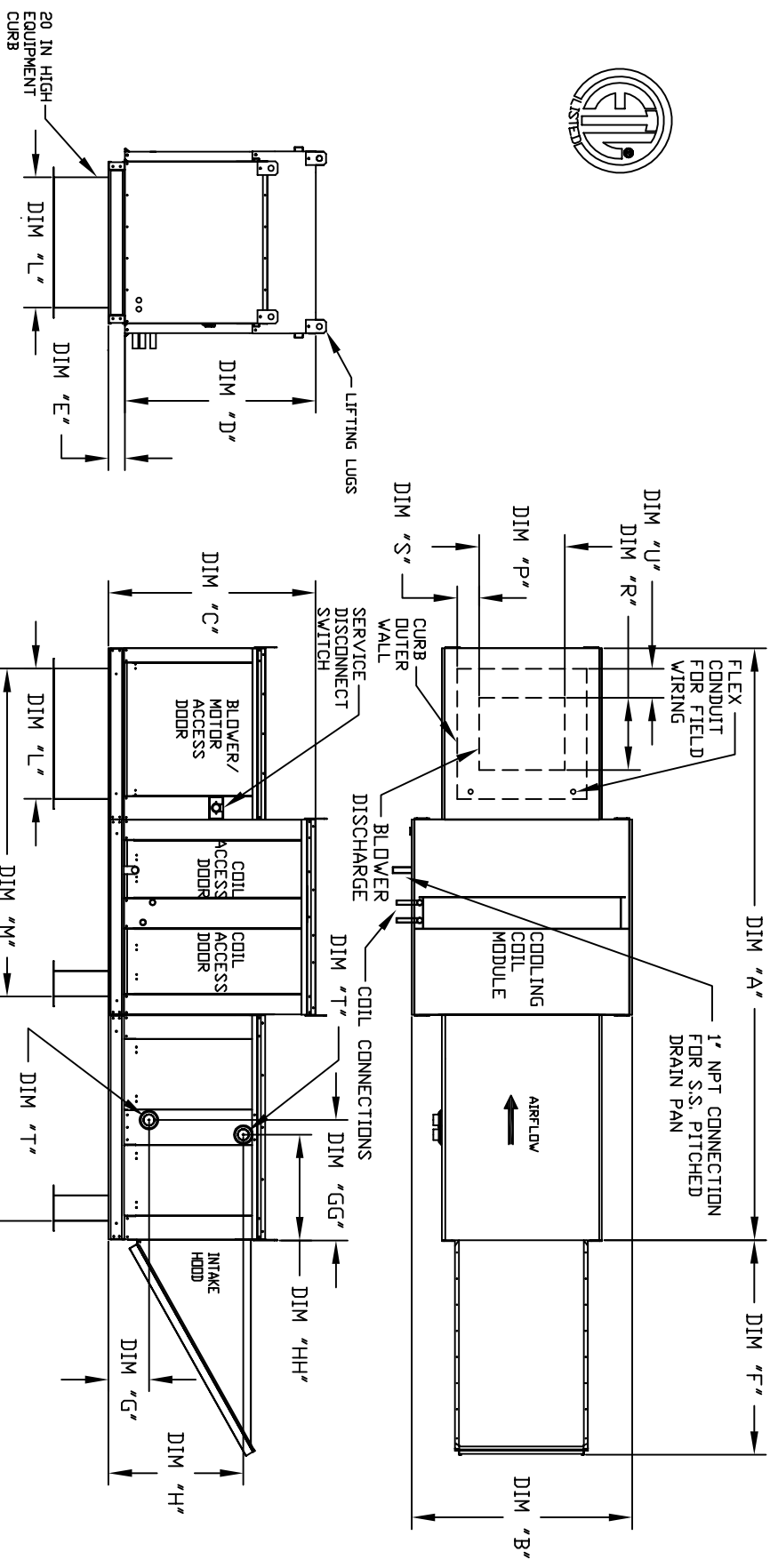


MODULAR OUTDOOR DOWN DISCHARGE BLOWER WITH HEATING AND COOLING COIL WITH INTAKE HOOD

REV#3 6/2/20K



ALL DIMENSIONS ARE NOMINAL AND GIVEN IN INCHES.

ROOF OPENING 2" SMALLER THAN CURB DIMENSION

MODEL	UNIT DIMENSIONS											DISCHARGE OPENING											Tonnage Range											Unit Information										
	A	B	C	D	E	F	G	H	I	J	K	L	M	N	P	R	S	U	MIN	MAX	Filter Size & Qty	Max. Filter Velocity	MIN	MAX	Filter Size & Qty	Max. Filter Velocity	MIN	MAX	Filter Size & Qty	Max. Filter Velocity	MIN	MAX	Filter Size & Qty	Max. Filter Velocity										
G10	116-5/8	39-3/8	42-3/4	39	3-3/4	44-3/8	8-1/4	22-7/16	24-3/4	19-11/16	107-15/16	13-1/4	11-1/2	3-7/8	1-3/4	3	12.5	16"x20"x2" (3)	@3500 CFM = 667 FPM	3	20	20"x25"x2" (3)	@5000 CFM = 580 FPM	3	20	20"x25"x2" (3)	@6000 CFM = 696 FPM	3	20	20"x25"x2" (3)	@8000 CFM = 762 FPM	3	20	20"x25"x2" (3)	@15000 CFM = 857 FPM									
G12	124-5/8	49-3/8	47-3/4	44	3-3/4	53-5/8	8-1/4	22-7/16	28-3/4	19-11/16	116-3/4	15-3/4	13-9/16	7-5/8	1-15/16	5	20	20"x25"x2" (3)	@5000 CFM = 580 FPM	5	20	20"x25"x2" (3)	@6000 CFM = 696 FPM	5	20	20"x25"x2" (3)	@8000 CFM = 762 FPM	5	20	20"x25"x2" (3)	@15000 CFM = 857 FPM													
G15	124-5/8	49-3/8	47-3/4	44	3-3/4	53-5/8	8-1/4	22-7/16	28-3/4	19-11/16	116-3/4	15-3/4	13-9/16	7-5/8	1-15/16	5	20	20"x25"x2" (3)	@5000 CFM = 580 FPM	5	20	20"x25"x2" (3)	@6000 CFM = 696 FPM	5	20	20"x25"x2" (3)	@8000 CFM = 762 FPM	5	20	20"x25"x2" (3)	@15000 CFM = 857 FPM													
G18	129-5/8	54-3/8	56-3/8	51-1/8	5-1/4	51-5/8	8-1/4	22-3/16	38	19-15/16	121-5/16	19	19	6-1/2	7	10	25	16"x20"x2" (6)	@8000 CFM = 762 FPM	10	40	16"x20"x2" (6)	@8000 CFM = 762 FPM	10	40	16"x20"x2" (6)	@8000 CFM = 762 FPM	10	40	16"x20"x2" (6)	@8000 CFM = 762 FPM													
G18	129-5/8	54-3/8	56-3/8	51-1/8	5-1/4	51-5/8	8-1/4	22-3/16	38	19-15/16	121-5/16	19	19	6-1/2	7	10	25	16"x20"x2" (6)	@8000 CFM = 762 FPM	10	40	16"x20"x2" (6)	@8000 CFM = 762 FPM	10	40	16"x20"x2" (6)	@8000 CFM = 762 FPM	10	40	16"x20"x2" (6)	@8000 CFM = 762 FPM													
G20	172-13/16	60-7/16	64-3/8	59-1/8	5-1/4	76-3/8	11-1/4	22-3/16	42	104-9/32	158-15/32	24-7/8	24-7/8	8-9/16	1-1/8	20	50	20"x25"x2" (8)	@22000 CFM = 957 FPM	20	50	20"x25"x2" (8)	@22000 CFM = 957 FPM	20	50	20"x25"x2" (8)	@22000 CFM = 957 FPM	20	50	20"x25"x2" (8)	@22000 CFM = 957 FPM													
G25	182-13/16	71/16	68-7/16	63-3/16	5-1/4	71-3/8	12-1/4	22-3/16	42	114-21/32	168-27/32	31-3/8	31-3/8	10-11/16	1-13/16	30	50	20"x25"x2" (8)	@22000 CFM = 957 FPM	30	50	20"x25"x2" (8)	@22000 CFM = 957 FPM	30	50	20"x25"x2" (8)	@22000 CFM = 957 FPM	30	50	20"x25"x2" (8)	@22000 CFM = 957 FPM													

HOT WATER COIL MODULE

STEAM COIL MODULE

MODEL	WEIGHT	TOTAL CAPACITY	PIPE CONNECTION	STEAM	MODEL	WEIGHT	TOTAL CAPACITY	PIPE CONNECTION
G10	765 LBS	165.63	2"	8-1/4	G10	765 LBS	176.49	2-1/2"
G12	1065 LBS	320.88	2"	8-1/4	G12	1065 LBS	328.19	2-1/2"
G15	1075 LBS	320.88	2"	8-1/4	G15	1075 LBS	328.19	2-1/2"
G18	1290 LBS	314.97	1-1/2"	9-1/2	G18	1285 LBS	505.64	2-1/2"
G20	2160 LBS	831.87	2-1/2"	10	G20	2125 LBS	812.24	2-1/2"
G25	3740 LBS	1290.14	3"	10-1/4	G25	3755 LBS	1292.45	3-1/2"