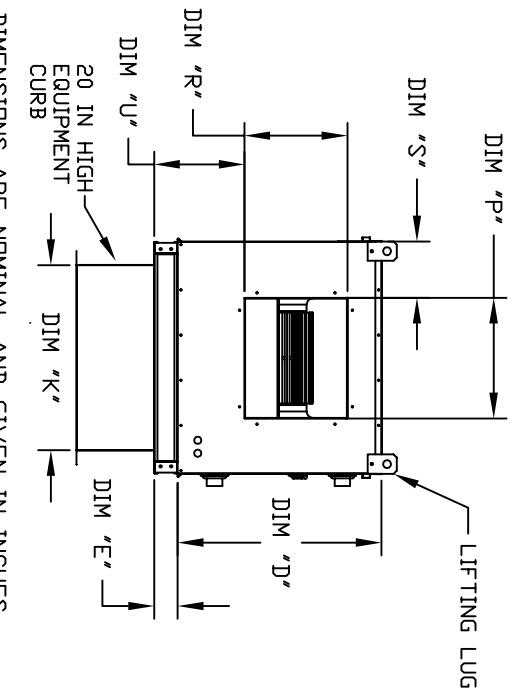
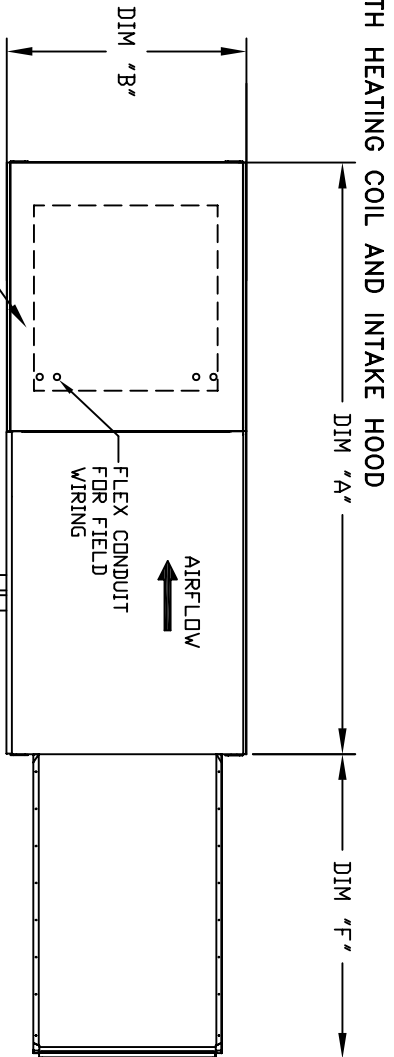


MODULAR OUTDOOR SIDE DISCHARGE BLOWER WITH HEATING COIL AND INTAKE HOOD

IMCSM
REV#1 2/6/2008



ALL DIMENSIONS ARE NOMINAL AND GIVEN IN INCHES.

MODEL	UNIT DIMENSIONS										DISCHARGE OPENING										UNIT INFORMATION									
	A	B	C	D	E	F	J	K	P	R	S	U	FILTER SIZE & QTY	MAX. FILTER VELOCITY	G	GG	H	HH	MODEL	WEIGHT	TOTAL CAPACITY	PIPE CONNECTION	STEAM	PSI	G	GG	H	HH		
G10	74-3/8	27-3/8	29-3/4	26-1/16	3-3/4	44-3/8	71	21	13 1/4	11-1/2	11-7/8	16'x20'x2' (3)	@3500 CFM = 667 FPM	5	8-3/4	21-1/16	16-15/16	G10	410 LBS	176.49	2-1/2	5	8-3/4	21-1/16	16-15/16	21-1/16	21-1/16			
G12	82-3/8	37-3/8	36-3/4	33-1/16	3-3/4	53-5/8	79	31	15-3/4	13-9/16	13-1/16	20'x25'x2' (3)	@5000 CFM = 580 FPM	5	8-3/4	21-1/16	18-3/8	G12	635 LBS	328.19	2-1/2	5	8-3/4	21-1/16	18-3/8	21-1/16	21-1/16			
G15	82-3/8	37-3/8	36-3/4	33-1/16	3-3/4	53-5/8	79	31	18-3/4	16	8-5/8	14-1/16	20'x25'x2' (3)	@6000 CFM = 696 FPM	5	10-1/4	21-1/16	23-5/8	G15	645 LBS	328.19	2-1/2	5	10-1/4	21-1/16	23-5/8	21-1/16			
G18	87-3/8	41-3/8	43-3/8	38-1/16	5-1/4	51-5/8	84	35	22	19	17-7/8	16'x20'x2' (6)	@8000 CFM = 762 FPM	5	10-1/4	21-1/16	23-5/8	G18	780 LBS	505.64	2-1/2	5	10-1/4	21-1/16	23-5/8	21-1/16	21-1/16			
920	118-1/2	48-7/16	51-3/8	46-1/8	5-1/4	76-3/8	115-3/16	42	24-7/8	11-1/16	19-1/8	16'x20'x2' (10)	@15000 CFM = 857 FPM	5	10-1/4	27-3/32	28-5/8	920	1335 LBS	812.24	2-1/2	5	10-1/4	27-3/32	28-5/8	27-3/32	27-3/32			
925	128-1/2	59-3/16	58-3/8	53-1/8	5-1/4	71-3/8	125-3/16	52-3/4	31-3/8	31-7/8	13-3/16	21-9/16	20'x25'x2' (8)	@22000 CFM = 957 FPM	5	10-1/4	27-3/32	31-3/4	925	1855 LBS	1234.45	2-1/2	5	10-1/4	27-3/32	31-3/4	27-3/32	27-3/32		

HOT WATER COIL MODULE

MODEL	WEIGHT	TOTAL CAPACITY	PIPE CONNECTION	G	GG	H	HH
G10	165.63	(MBH)	2" (MP1)	8-1/4	22-7/16	24-3/4	19-11/16
G12	320.88		2	8-1/4	22-7/16	28-3/4	19-11/16
G15	320.88		2	8-1/4	22-7/16	28-3/4	19-11/16
G18	514.97		1-1/2	9-1/2	22-3/16	38	19-15/16
920	831.87		2-1/2	10	28-9/16	45-1/2	25-9/16
925	1855 LBS		3	10-1/4	28-13/16	52-1/4	25-5/16

STEAM COIL MODULE

MODEL	WEIGHT	TOTAL CAPACITY	PIPE CONNECTION	STEAM	PSI	G	GG	H	HH
G10	410 LBS	176.49	2-1/2	5	8-3/4	21-1/16	16-15/16	21-1/16	21-1/16
G12	635 LBS	328.19	2-1/2	5	8-3/4	21-1/16	18-3/8	21-1/16	21-1/16
G15	645 LBS	328.19	2-1/2	5	8-3/4	21-1/16	18-3/8	21-1/16	21-1/16
G18	780 LBS	505.64	2-1/2	5	10-1/4	21-1/16	23-5/8	21-1/16	21-1/16
920	1335 LBS	812.24	2-1/2	5	10-1/4	27-3/32	28-5/8	27-3/32	27-3/32
925	1855 LBS	1234.45	2-1/2	5	10-1/4	27-3/32	31-3/4	27-3/32	27-3/32