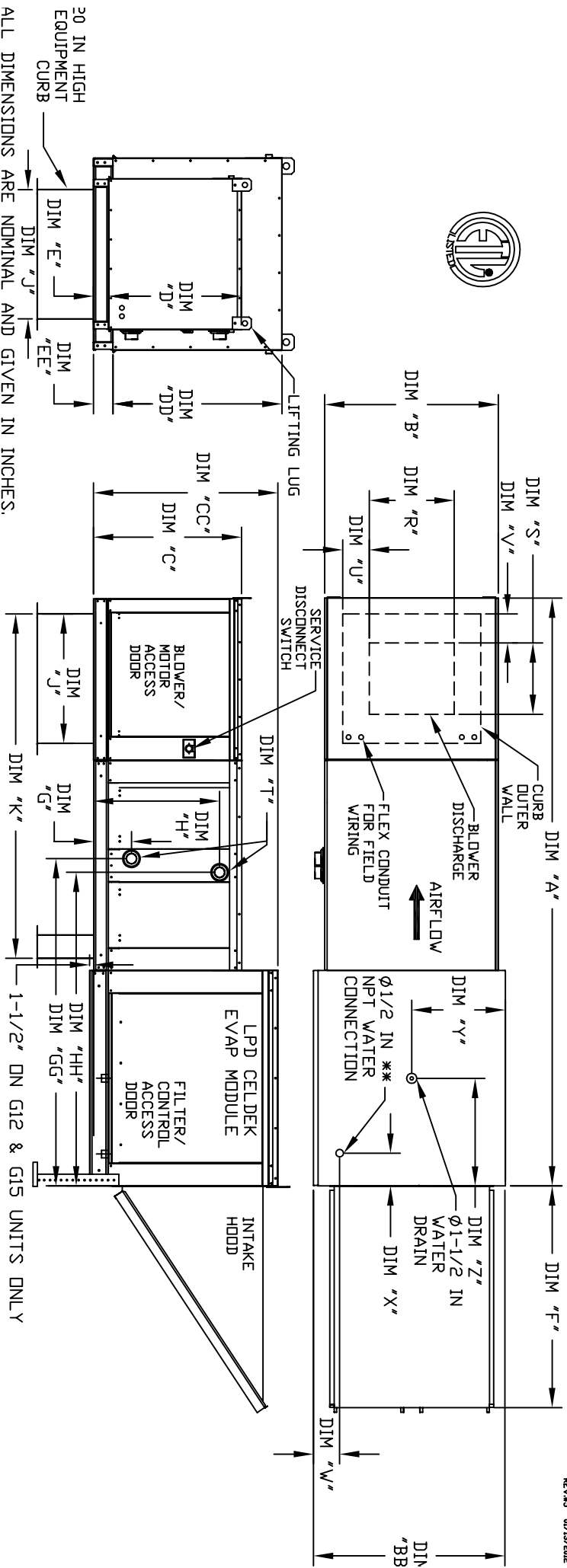


MODULAR OUTDOOR DOWN DISCHARGE BLOWER WITH HEATING COIL, LPD EVAPORATIVE COOLER AND INTAKE HOOD

REV#5 01/13/2012



30 IN HIGH EQUIPMENT CURB

MODEL	A	B	BB	C	CC	D	DD	E	EE	F	J	K	R	S	U	V	W	X	Y	Z
G10	106-5/8	27-3/8	36-3/4	29-3/4	36-3/4	26-1/16	33	3-3/4	3-3/4	43-5/8	21	71	13-1/4	11-1/2	3-7/8	1-3/4	4-1/2	6-1/4	18	16
G12	120-5/8	37-3/8	40-3/4	36-3/4	43-3/8	33-1/16	38-1/8	3-3/4	5-1/4	51-5/8	31	79	15-3/4	13-9/16	7-5/8	7-15/16	4-1/2	5-3/4	20	19
G15	120-5/8	37-3/8	40-3/4	36-3/4	43-3/8	33-1/16	38-1/8	3-3/4	5-1/4	51-5/8	31	79	18-3/4	16	6-1/8	5-1/2	4-1/2	5-3/4	20	19
G18	122-3/4	41-3/8	47-7/8	43-3/8	51-3/8	38-1/16	46-1/8	5-1/4	5-1/4	76-3/8	35	84	22	19	6-1/2	7	4-1/2	5-3/4	23-1/2	17-1/2
920	153-7/8	48-7/16	58-5/8	51-3/8	58-3/8	46-1/8	53-1/8	5-1/4	5-1/4	71-3/8	42	115-3/16	24-7/8	24-7/8	8-9/16	1-1/8	4-1/2	5-3/4	28-7/8	17-1/2
925	163-7/8	59-3/16	74-7/8	58-3/8	58-3/8	53-1/8	53-1/8	5-1/4	5-1/4	71-3/8	42	125-3/16	31-3/8	31-3/8	10-11/16	3-13/16	4-1/2	5-3/4	37-1/2	17-1/2

HOT WATER COIL MODULE			STEAM COIL MODULE		
MODEL	TOTAL CAPACITY (MBH)	PIPE CONNECTION	MODEL	TOTAL CAPACITY (MBH)	PIPE CONNECTION
G10	165.63	2	G10	176.49	2-1/2
G12	320.88	2	G12	328.19	2-1/2
G15	320.88	2	G15	328.19	2-1/2
G18	514.87	2-1/2	G18	505.64	2-1/2
920	831.87	2-1/2	920	812.24	2-1/2
925	1230.16	3	925	1234.45	2-1/2

MODEL	FILTER SIZE & QTY	CELDEK EVAPORATIVE COOLING UNIT W/										
		MODEL	TOT. WEIGHT	SIZE	QTY	NOZZLES	MAX. FLOW RATE	DISCHARGE OPENING	WATER INLET	DRAIN	OPENING	
G10	20"x25"x2" (3)	G10	605 LBS	25"x32"x12"	20	6.5 GPH	2-1/2	53-5/16	16-15/16	53-5/16		
G12	16"x20"x2" (6)	G12	890 LBS	30"x36"x12"	28	8.4 GPH	2-1/2	59-5/16	18-3/8	59-5/16		
G15	16"x20"x2" (6)	G15	900 LBS	30"x36"x12"	28	8.4 GPH	2-1/2	59-5/16	18-3/8	59-5/16		
G18	16"x20"x2" (10)	G18	1205 LBS	38"x43"x12"	35	10.15 GPH	2-1/2	56-7/16	23-5/8	56-7/16		
920	20"x25"x2" (8)	920	1750 LBS	45"x54"x12"	42	12.6 GPH	2-1/2	62-15/32	28-5/8	62-15/32		
925	20"x25"x2" (8)	925	2350 LBS	45"x72"x12"	57	20.1 GPH	2-1/2	62-15/32	31-3/4	62-15/32		

MAX. ROOF OPENING 2" SMALLER THEN CURB OUTSIDE DIMENSION  
 \*\* MAY FLVAD I/ATED DPREVIDE - EN DPT A 7A NFG - C