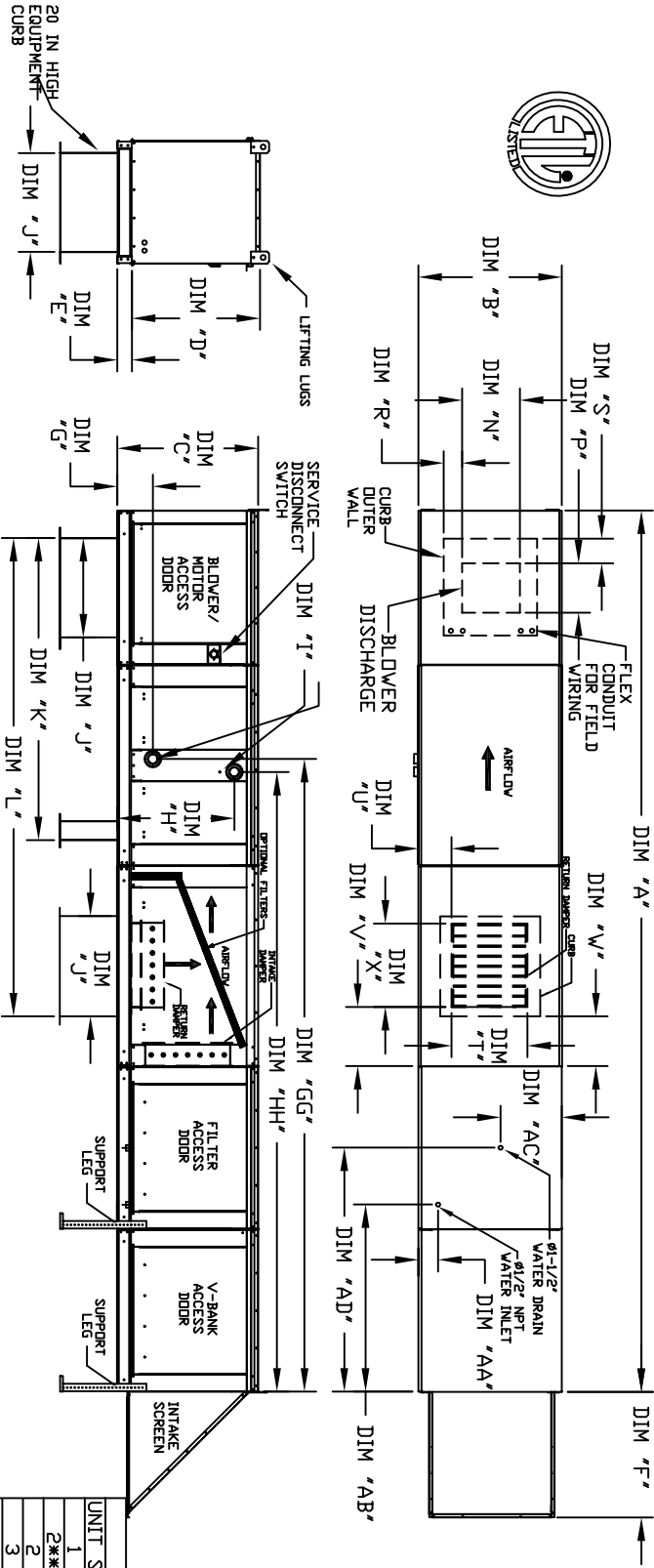


MODULAR OUTDOOR DOWN DISCHARGE BLOWER WITH V-BANK, EVAPORATIVE COOLER, HEATING COIL, MIXING BOX AND SCREEN INTAKE

STVBCB0104M
REV#1 12/17/2016



ALL DIMENSIONS ARE NOMINAL AND GIVEN IN INCHES.

MAX. ROOF OPENING 2" SMALLER THAN CURB OUTSIDE DIMENSION

DISCHARGE OPENING

WATER INLET DRAIN OPENING V-BANK FILTER

UNIT SIZE	1	2**	3	4	5
UNIT SIZE	10"x16"x2" (5)	20"x25"x2" (2)	16"x25"x2" (1)	15"x20"x2" (2)	18"x25"x2" (4)
FILTER SIZE & QTY	10"x16"x2" (5)	20"x25"x2" (2)	16"x25"x2" (1)	15"x20"x2" (2)	18"x25"x2" (4)
OPTIONAL MIXING BOX FILTERS		14.5"x19"x2" (12)			

UNIT SIZE	UNIT DIMENSIONS					DISCHARGE OPENING					WATER INLET DRAIN OPENING					V-BANK FILTER							
	A	B	C	D	E	F	J	K	L	T	U	V	W	X	N	P	R	S	AA	AB	AC	AD	
1	191-1/8	27-3/8	29-3/4	26-1/16	3-3/4	422-3/8	21	65-13/16	98-5/8	14	8	14	12-1/2	18	13-1/4	11-1/2	3-7/8	1-3/4	4-1/2	38-1/2	13	48-1/4	20"x25"x2" (3)
2**	199-1/8	37-3/8	36-3/4	33-1/16	3-3/4	30-5/16	31	74-5/8	112-9/16	11	74-5/8	112-9/16	7-1/2	24	13-3/4	13-9/16	7-5/8	7-15/16	4-1/2	38-1/2	18	48-1/4	16"x20"x2" (8)
3	199-1/8	37-3/8	36-3/4	33-1/16	3-3/4	30-5/16	31	74-5/8	112-9/16	11	74-5/8	112-9/16	7-1/2	24	13-3/4	13-9/16	7-5/8	7-15/16	4-1/2	38-1/2	18	48-1/4	16"x20"x2" (8)
4	210-1/8	41-3/8	43-3/8	38-1/16	5-1/4	34-3/16	35	79-3/16	120-1/8	28	8	7	4-1/2	30	22	19	6-1/2	7	4-1/2	44	20	57-1/4	20"x25"x2" (8)
5	252-1/2	48-7/16	51-3/8	46-1/8	5-1/4	47-1/4	42	104-9/32	153-15/16	33	10	11	8	36	24-7/8	24-7/8	8-9/16	1-1/8	4-1/2	41-1/8	23-1/2	52-7/8	16"x20"x2" (15)
	272-1/2	59-3/16	58-3/8	53-1/8	5-1/4	49-1/2	52-3/4	114-1/2	170-7/8	43	10	11	8	36	24-7/8	24-7/8	8-9/16	1-1/8	4-1/2	41-1/8	23-1/2	52-7/8	16"x20"x2" (15)

UNIT SIZE	TOTAL CAPACITY PIPE CONNECTION					TOTAL CAPACITY PIPE CONNECTION					TOTAL CAPACITY PIPE CONNECTION					TOTAL CAPACITY PIPE CONNECTION										
	(KMBH)	"1" (KMP1)	"2" (KMP2)	"3" (KMP3)	"4" (KMP4)	(KMBH)	"1" (KMP1)	"2" (KMP2)	"3" (KMP3)	"4" (KMP4)	(KMBH)	"1" (KMP1)	"2" (KMP2)	"3" (KMP3)	"4" (KMP4)	(KMBH)	"1" (KMP1)	"2" (KMP2)	"3" (KMP3)	"4" (KMP4)	(KMBH)	"1" (KMP1)	"2" (KMP2)	"3" (KMP3)	"4" (KMP4)	
1	165.63	2	8-1/4	129-3/16	24-3/4	4126-7/16	1	176.49	2-1/2	5	8-3/4	127-13/16	16-15/16	127-13/16	15	16"x20"x2" (3)	3500	CFM = 567	FPM	12	795	LBS	20"x24"x12"	1050	FPM	12
2**	320.88	2	8-1/4	129-3/16	28-3/4	4126-7/16	2**	328.19	2-1/2	5	8-3/4	127-13/16	18-3/8	127-13/16	18	16"x25"x2" (3)	5000	CFM = 687	FPM	20	1160	LBS	25"x32"x12"	900	FPM	20
3	514.97	2	8-1/4	129-3/16	28-3/4	4126-7/16	3	505.64	2-1/2	5	10-1/4	139-13/16	23-5/8	139-13/16	23	16"x20"x2" (6)	8000	CFM = 762	FPM	28	1455	LBS	30"x36"x12"	1067	FPM	28
4	831.87	2-1/2	10	153-5/8	45-1/2	1150	4	812.24	2-1/2	5	10-1/4	139-13/16	28-5/8	152-3/16	28	16"x20"x2" (10)	15000	CFM = 857	FPM	35	2395	LBS	38"x43"x12"	1322	FPM	35
5	1230.16	3	10-1/4	153-7/8	52-1/4	150-3/8	5	1234.45	2-1/2	5	10-1/4	152-3/16	31-3/4	152-3/16	31	20"x25"x2" (8)	22000	CFM = 957	FPM	42	3090	LBS	45"x54"x12"	1304	FPM	42

STANDARD EVAPORATIVE COOLING UNIT W/
TOTAL WEIGHT MEDIA SIZE & QTY VEL. @ MAX. CFM/NOZZLES/MAX. FLOW RATE

UNIT SIZE	TOT. WEIGHT	MEDIA SIZE & QTY	VEL.	MAX. CFM/NOZZLES	MAX. FLOW RATE
1	790 LBS	20"x25"x2" (8)	3	406 FPM	6 GPH
2**	1165 LBS	16"x20"x2" (8)	3	358 FPM	5 GPH
3	1175 LBS	16"x20"x2" (8)	3	429 FPM	5 GPH
4	1470 LBS	20"x25"x2" (8)	3	348 FPM	7 GPH
5	2420 LBS	30"x36"x12" (15)	3	572 FPM	12 GPH

CELDEK EVAPORATIVE COOLING UNIT W/
TOTAL WEIGHT MEDIA SIZE & QTY VEL. @ MAX. CFM/NOZZLES/MAX. FLOW RATE

UNIT SIZE	TOT. WEIGHT	MEDIA SIZE & QTY	VEL.	MAX. CFM/NOZZLES	MAX. FLOW RATE
1	795 LBS	25"x32"x12" (8)	3	900 FPM	20 GPH
2**	1160 LBS	25"x32"x12" (8)	3	1080 FPM	20 GPH
3	1455 LBS	30"x36"x12" (15)	3	1067 FPM	28 GPH
4	2390 LBS	38"x43"x12" (15)	3	1322 FPM	35 GPH
5	3090 LBS	45"x54"x12" (12)	3	1304 FPM	42 GPH

** DIMENSIONS APPLY TO UNITS WITH G12 BLOWERS ONLY
*** MAY VARY BASED ON DIFFERENT - EN DET A 70 NRC C