

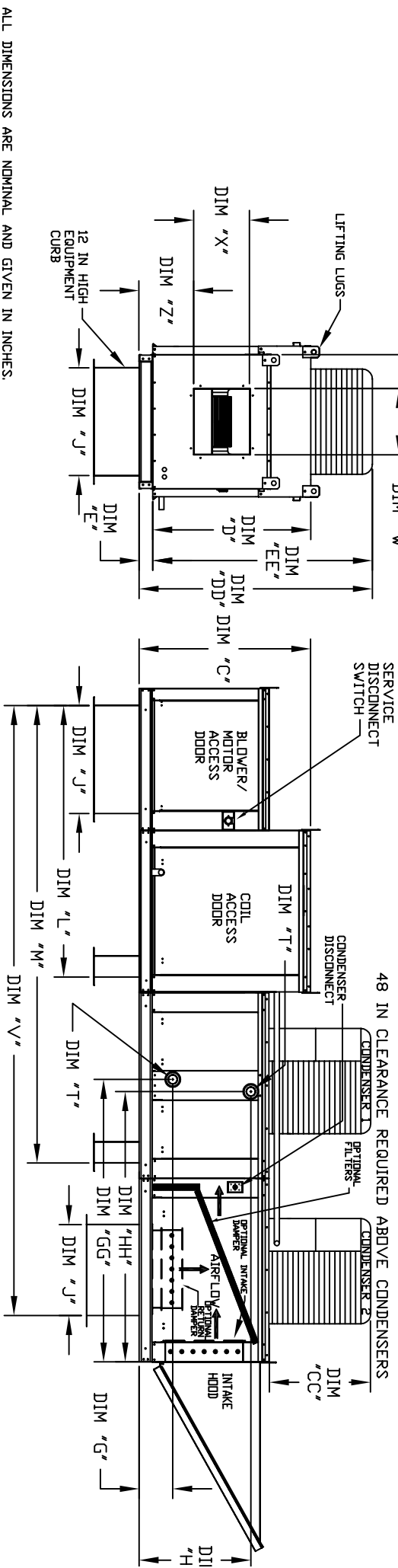
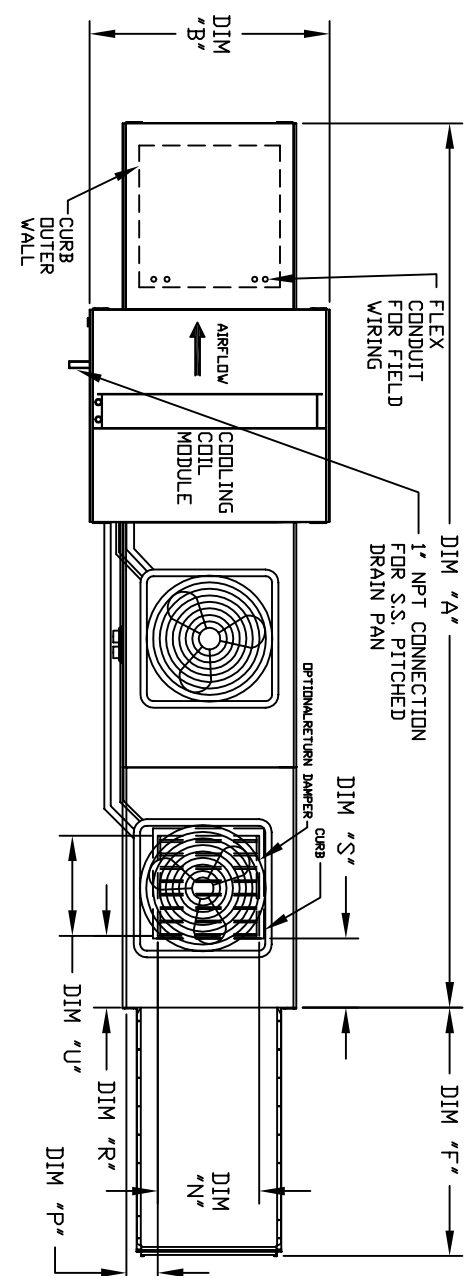


OUTDOOR SIDE DISCHARGE MOD PACKAGE UNIT, HEATING COIL, INTAKE HOOD AND OPTIONAL MIXING BOX

IHBHCCSMAH-4PU
REV#7 06/15/2015

CONDENSER INFORMATION

MODEL	WEIGHT*	TONNAGE		CC	DD	EE
		#1	#2			
2 TON-G10 119 LBS	2 TON	N/A	N/A	26-5/16	56-1/16	52-3/8
3 TON-G10 134 LBS	3 TON	N/A	N/A	33-5/16	63-1/16	59-3/8
5 TON-G10 253 LBS	2 TON	3 TON	3 TON	33-5/16	63-1/16	59-3/8
5 TON-G10 302 LBS	2.5 TON	2.5 TON	2.5 TON	32-13/16	62-9/16	58-7/8
7.5 TON-G12 197 LBS	5 TON	N/A	N/A	32-13/16	69-9/16	65-7/8
7.5 TON-G12 348 LBS	2.5 TON	2.5 TON	2.5 TON	32-13/16	69-9/16	65-7/8
10 TON-G12 394 LBS	5 TON	5 TON	5 TON	32-13/16	69-9/16	65-7/8
5 TON-G15 197 LBS	5 TON	N/A	N/A	32-13/16	69-9/16	65-7/8
5 TON-G15 302 LBS	2.5 TON	2.5 TON	2.5 TON	32-13/16	69-9/16	65-7/8
8 TON-G15 331 LBS	3 TON	3 TON	3 TON	33-5/16	71-11/16	68
10 TON-G15 394 LBS	5 TON	5 TON	5 TON	32-13/16	69-9/16	65-7/8
10 TON-G18 394 LBS	5 TON	5 TON	5 TON	32-13/16	76-3/16	70-7/8
10 TON-920 394 LBS	5 TON	5 TON	5 TON	32-13/16	97-3/16	91-15/16



ALL DIMENSIONS ARE NOMINAL AND GIVEN IN INCHES.

MODEL	UNIT DIMENSIONS											DISCHARGE OPENING											TONNAGE RANGE UNIT INFORMATION										
	A	B	C	D	E	F	G	H	I	J	K	L	M	N	O	P	Q	R	S	T	U	V	W	X	Y	Z	MIN	MAX	FILTER SIZE & QTY	MAX. FILTER VELOCITY			
G10	158-7/8	89-3/8	42-3/4	39	6-3/4	44-3/8	21	65-13/16	107-15/16	14	8	14	12-1/2	18	140-7/8	13-1/4	11-1/2	6-3/8	11-7/8	2	5 Ton	16"x20"x2"	(3)	@350 CFM = 667 FPM									
G12	166-7/8	89-3/8	47-3/4	44	6-3/4	53-5/8	31	74-5/8	116-3/4	11	11	7-1/2	24	154-7/8	15-3/4	13-9/16	10-1/8	13-1/16	5	10 Ton	20"x25"x2"	(3)	@500 CFM = 580 FPM										
G15	166-7/8	89-3/8	47-3/4	44	6-3/4	53-5/8	31	74-5/8	116-3/4	11	11	7-1/2	24	154-7/8	15-3/4	13-9/16	10-1/8	13-1/16	5	10 Ton	20"x25"x2"	(3)	@500 CFM = 580 FPM										
G18	171-7/8	84-3/8	56-3/8	51-1/8	5-1/4	51-5/8	35	79-3/16	121-5/16	28	8	7	4-1/2	30	162-3/8	22	19	8-5/8	14-1/16	5	10 Ton	20"x25"x2"	(3)	@500 CFM = 696 FPM									
920	227-1/8	60-7/16	64-3/8	59-1/8	5-1/4	76-3/8	42	106-3/16	169-1/2	33	10	11	8	36	208	24-7/8	24-7/8	11-1/16	19-1/8	10 Ton	16"x20"x2"	(10)	@1500 CFM = 857 FPM										

MODEL	TOTAL CAPACITY PIPE CONNECTION											TOTAL CAPACITY PIPE CONNECTION STEAM										
	(MMHD)	"T" (MPRT)	G	GG	H	HH	(MMHD)	"T" (MPRT)	PST	G	GG	H	HH									
G10	920 LBS	165.63	2	8-1/4	64-11/16	24-3/4	61-15/16	8-1/4	64-11/16	28-3/4	61-15/16	8-3/4	63-5/16									
G12	1260 LBS	320.88	2	8-1/4	64-11/16	28-3/4	61-15/16	2-1/2	8-3/4	63-5/16	18-3/8	63-5/16										
G15	1290 LBS	320.88	2	8-1/4	64-11/16	28-3/4	61-15/16	2-1/2	8-3/4	63-5/16	18-3/8	63-5/16										
G18	1570 LBS	514.97	2-1/2	9-1/2	64-7/16	38	62-3/16	5	10-1/4	63-5/16	23-5/8	63-5/16										
920	2635 LBS	831.87	2-1/2	10	82-7/8	45-1/2	79-7/8	5	10-1/4	81-13/32	28-5/8	81-13/32										

MODEL	TOTAL CAPACITY PIPE CONNECTION											TOTAL CAPACITY PIPE CONNECTION STEAM										
	(MMHD)	"T" (MPRT)	G	GG	H	HH	(MMHD)	"T" (MPRT)	PST	G	GG	H	HH									
G10	920 LBS	176.49	2-1/2	8-3/4	63-5/16	16-15/16	63-5/16	5	8-3/4	63-5/16	18-3/8	63-5/16										
G12	1260 LBS	328.19	2-1/2	8-3/4	63-5/16	18-3/8	63-5/16	5	8-3/4	63-5/16	18-3/8	63-5/16										
G15	1290 LBS	328.19	2-1/2	8-3/4	63-5/16	18-3/8	63-5/16	5	8-3/4	63-5/16	18-3/8	63-5/16										
G18	1565 LBS	505.64	2-1/2	10-1/4	63-5/16	23-5/8	63-5/16	5	10-1/4	63-5/16	23-5/8	63-5/16										
920	2600 LBS	812.24	2-1/2	5	10-1/4	81-13/32	28-5/8	5	10-1/4	81-13/32	28-5/8	81-13/32										

MODEL	OPTIONAL MIXING BOX FILTERS										
	FILTER SIZE & QTY	MAX. FILTER VELOCITY									
G10	20"x25"x2" (2), 16"x28"x2" (1)	@350 CFM = 667 FPM									
G12	20"x25"x2" (2), 16"x28"x2" (1)	@500 CFM = 580 FPM									
G15	20"x25"x2" (2), 16"x28"x2" (1)	@500 CFM = 580 FPM									
G18	18"x25"x2" (4), 15"x15"x2" (2)	@600 CFM = 696 FPM									
920	18"x25"x2" (4), 16"x20"x2" (2)	@1500 CFM = 857 FPM									

DO NOT REMOVE ANY DIMENSIONS FROM THE UNIT.

DO NOT REMOVE ANY DIMENSIONS FROM THE UNIT.