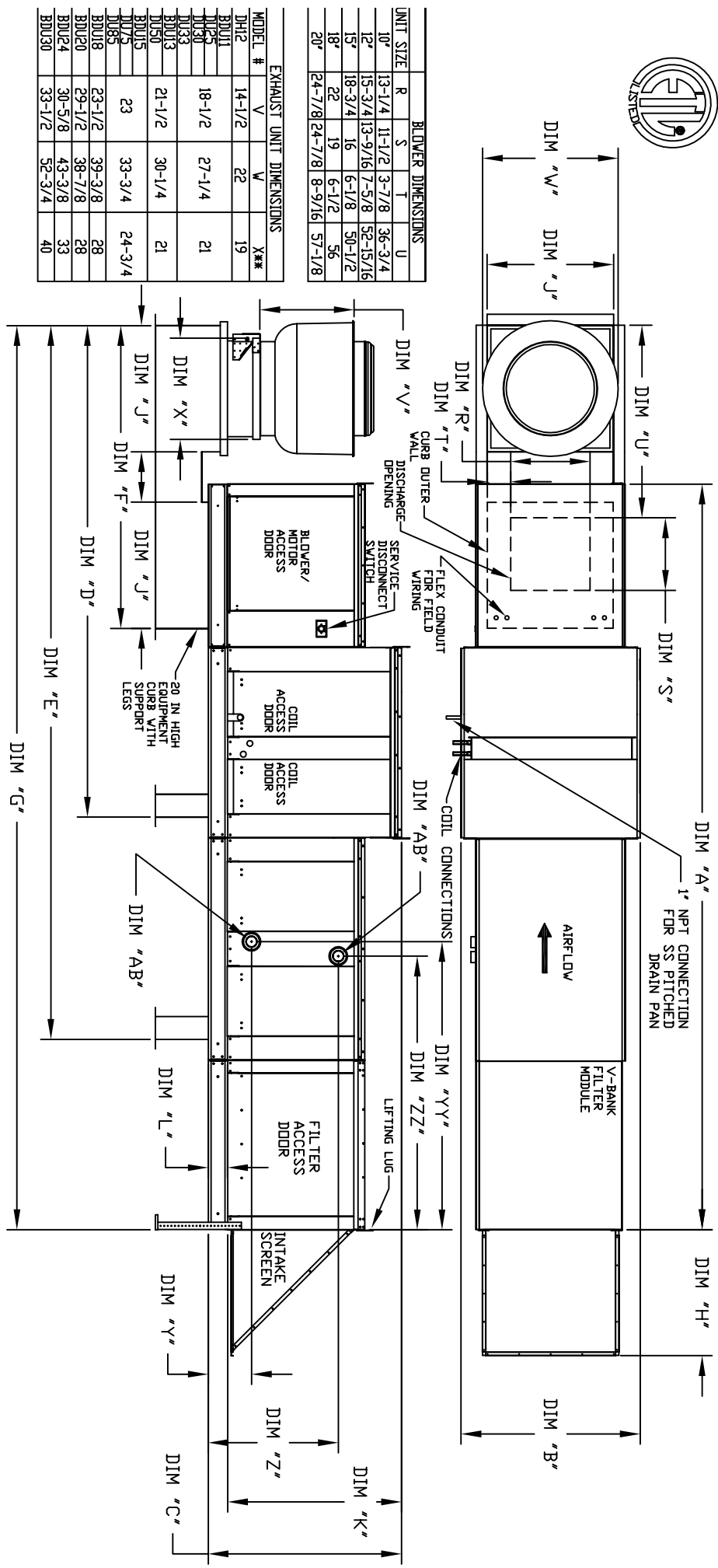


MODULAR OUTDOOR DOWN DISCHARGE BLOWER-ROOF TOP PACKAGE WITH V-BANK FILTER, HEATING AND COILING COIL AND SCREEN INTAKE



BLOWER DIMENSIONS

UNIT SIZE	R	S	T	U
10"	13-1/4	11-1/2	3-7/8	36-3/4
12"	15-3/4	13-9/16	7-5/8	52-15/16
15"	18-3/4	16	6-1/8	50-1/2
18"	22	19	6-1/2	56
20"	24-7/8	24-7/8	8-9/16	57-1/8

EXHAUST UNIT DIMENSIONS

MODEL #	V	V	Y**
DUH2	14-1/2	22	19
DUJ1	18-1/2	27-1/4	21
DUK2	18-1/2	27-1/4	21
DUK3	21-1/2	30-1/4	21
DUJ3	21-1/2	30-1/4	21
DUJ5	23	33-3/4	24-3/4
DUJ8	23-1/2	39-3/8	28
DUJ20	29-1/2	38-7/8	33
DUJ24	30-5/8	43-3/8	33
DUJ30	33-1/2	52-3/4	40

CURB AND RAIL DIMENSIONS

SUPPLY UNIT DIMENSIONS	A	B	C	D	E	F	G	H	J	K	L	MODEL WEIGHT (LBS)	TOTAL CAPACITY PIPE CONNECTION	Y	YY	Z	ZZ	MODEL WEIGHT (LBS)	TOTAL CAPACITY PIPE CONNECTION	Y	YY	Z	ZZ
DUH2	148-7/8	139-3/8	142-3/4	100-3/16	142-15/16	160-7/8	1-1/4	22-3/8	21	39	3-3/4	1110	2	8-1/4	11-1/16	24-3/4	51-15/16	1110	2	8-1/4	11-1/16	24-3/4	51-15/16
DUJ1	156-7/8	149-3/8	147-3/4	119-5/8	161-3/4	169-1/4	1-1/4	23-1/8	31	44	3-3/4	1440	2	8-1/4	11-1/16	28-3/4	51-15/16	1440	2	8-1/4	11-1/16	28-3/4	51-15/16
DUK2	156-7/8	149-3/8	147-3/4	119-5/8	161-3/4	169-1/4	1-1/4	23-1/8	31	44	3-3/4	1440	2	8-1/4	11-1/16	28-3/4	51-15/16	1440	2	8-1/4	11-1/16	28-3/4	51-15/16
DUK3	171-7/8	154-3/8	156-3/8	128-3/8	168-3/4	176-1/2	1-1/2	25-1/8	31	51	3-3/4	1755	2	9-1/2	12-1/8	31-1/2	58-3/16	1755	2	9-1/2	12-1/8	31-1/2	58-3/16
DUJ3	171-7/8	154-3/8	156-3/8	128-3/8	168-3/4	176-1/2	1-1/2	25-1/8	31	51	3-3/4	1755	2	9-1/2	12-1/8	31-1/2	58-3/16	1755	2	9-1/2	12-1/8	31-1/2	58-3/16
DUJ5	187-1/8	169-3/8	171-3/8	141-1/2	181-1/2	191-1/2	1-1/2	27-1/8	31	51	3-3/4	2590	2-1/2	10	13-1/8	35-1/2	65-1/2	2590	2-1/2	10	13-1/8	35-1/2	65-1/2
DUJ8	187-1/8	169-3/8	171-3/8	141-1/2	181-1/2	191-1/2	1-1/2	27-1/8	31	51	3-3/4	2590	2-1/2	10	13-1/8	35-1/2	65-1/2	2590	2-1/2	10	13-1/8	35-1/2	65-1/2
DUJ20	207-1/8	189-3/8	191-3/8	161-1/2	201-1/2	211-1/2	1-1/2	31-1/8	31	51	3-3/4	4318	2-1/2	10	13-1/8	35-1/2	65-1/2	4318	2-1/2	10	13-1/8	35-1/2	65-1/2
DUJ24	207-1/8	189-3/8	191-3/8	161-1/2	201-1/2	211-1/2	1-1/2	31-1/8	31	51	3-3/4	4318	2-1/2	10	13-1/8	35-1/2	65-1/2	4318	2-1/2	10	13-1/8	35-1/2	65-1/2
DUJ30	227-1/8	209-3/8	211-3/8	181-1/2	221-1/2	231-1/2	1-1/2	35-1/8	31	51	3-3/4	5590	2-1/2	10	13-1/8	35-1/2	65-1/2	5590	2-1/2	10	13-1/8	35-1/2	65-1/2

UNIT INFORMATION

UNIT SIZE & QTY	MAX. FILTER VELOCITY	TONNAGE RANGE
20"x25"x2" (3)	6500 CFM = 406 FPM	3 Ton
15"x20"x2" (3)	6500 CFM = 358 FPM	5 Ton
15"x20"x2" (3)	6600 CFM = 429 FPM	20 Ton
20"x25"x2" (3)	6600 CFM = 348 FPM	10 Ton
15"x20"x2" (15)	61500 CFM = 572 FPM	20 Ton
		40 Ton

HOT WATER COIL MODULE

MODEL WEIGHT (LBS)	TOTAL CAPACITY PIPE CONNECTION	Y	YY	Z	ZZ
1110	2	8-1/4	11-1/16	24-3/4	51-15/16
1656.3	2	8-1/4	11-1/16	28-3/4	51-15/16
320.88	2	8-1/4	11-1/16	28-3/4	51-15/16
320.88	2	8-1/4	11-1/16	28-3/4	51-15/16
1450	2	8-1/4	11-1/16	28-3/4	51-15/16
1755	2	9-1/2	12-1/8	31-1/2	58-3/16
514.97	1-1/2	9-1/2	12-1/8	31-1/2	58-3/16
831.87	2-1/2	10	13-1/8	35-1/2	65-1/2

STEAM COIL MODULE

MODEL WEIGHT (LBS)	TOTAL CAPACITY PIPE CONNECTION	Y	YY	Z	ZZ
176.49	2-1/2	8-3/4	21-1/16	16-15/16	21-1/16
328.19	2-1/2	8-3/4	21-1/16	18-3/8	21-1/16
328.19	2-1/2	8-3/4	21-1/16	18-3/8	21-1/16
505.64	2-1/2	8-3/4	21-1/16	18-3/8	21-1/16
1750	2-1/2	10-1/4	21-1/16	23-5/8	21-1/16
812.24	2-1/2	10-1/4	21-1/16	23-5/8	21-1/16