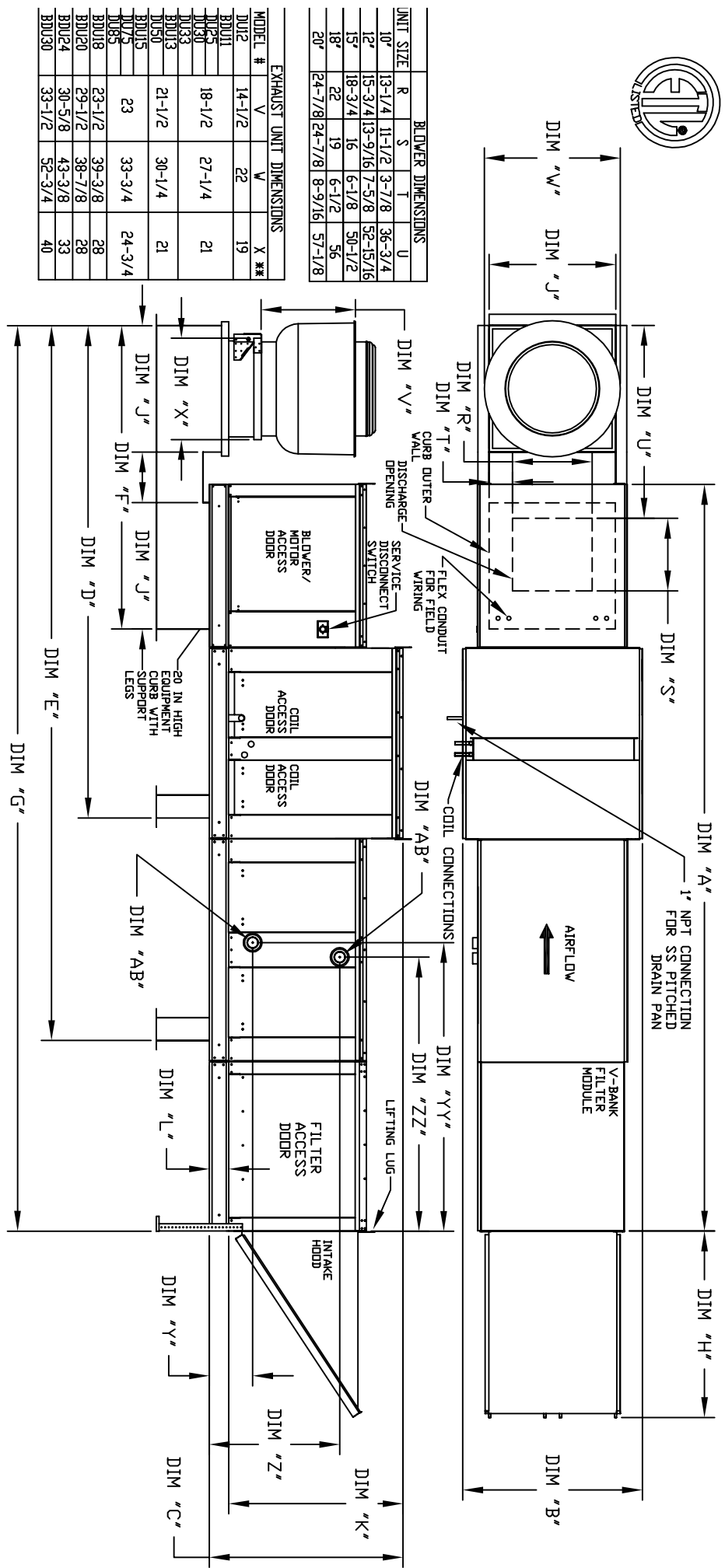


MODULAR OUTDOOR DOWN DISCHARGE BLOWER-ROOF TOP PACKAGE WITH V-BANK FILTER, HEATING AND COILING COIL AND INTAKE HOOD



BLOWER DIMENSIONS

UNIT SIZE	R	S	T	U
10"	13-1/4	11-1/2	3-7/8	36-3/4
12"	15-3/4	13-9/16	7-5/8	52-15/16
15"	18-3/4	16	6-1/8	50-1/2
18"	22	19	6-1/2	56
20"	24-7/8	24-7/8	8-9/16	57-1/8

EXHAUST UNIT DIMENSIONS

MODEL #	V	V	X	**
BDU2	14-1/2	22	19	
BDU11				21
BDU5	18-1/2	27-1/4		
BDU30				21
BDU33				21
BDU50	21-1/2	30-1/4		
BDU5				24-3/4
BDU5	23	33-3/4		
BDU8				28
BDU18	23-1/2	39-3/8		
BDU20	29-1/2	38-7/8		28
BDU24	30-5/8	43-3/8		33
BDU30	33-1/2	52-3/4		40

ALL DIMENSIONS ARE NOMINAL AND GIVEN IN INCHES

SUPERLY UNIT DIMENSIONS					CURB AND RAIL DIMENSIONS													HOT WATER COIL MODULE													STEAM COIL MODULE												
MODEL	A	B	C	D	E	F	G	H	I	J	K	L	MODEL WEIGHT (LBS)	TOTAL CAPACITY (GPH)	"AB" (WPT)	Y	YY	Z	ZZ	MODEL WEIGHT (LBS)	TOTAL CAPACITY (GPH)	"AB" (WPT)	Y	YY	Z	ZZ																	
G10	148-7/8	39-3/8	42-3/4	100-3/16	142-15/16	66	178-1/4	44-3/8	21	39	3-3/4	G10	1130	165.63	2	8-1/4	22-7/16	24-3/4	41-9-11/16	G10	1130	176.49	2-1/2	5	8-3/4	21-1/16	6-15-7/16	21-1/16															
G12	156-7/8	49-3/8	47-3/4	119-5/8	161-3/4	76	197-1/4	53-5/8	31	44	3-3/4	G12	1470	320.88	2	8-1/4	22-7/16	28-3/4	49-11/16	G12	1470	328.19	2-1/2	5	8-3/4	21-1/16	18-3/8	21-1/16															
G15	156-7/8	49-3/8	47-3/4	119-5/8	161-3/4	76	197-1/4	53-5/8	31	44	3-3/4	G15	1480	320.88	2	8-1/4	22-7/16	28-3/4	49-11/16	G15	1480	328.19	2-1/2	5	8-3/4	21-1/16	18-3/8	21-1/16															
G18	171-7/8	54-3/8	56-3/8	128-3/16	171-5/16	84	211-3/4	51-5/8	35	51	4-1/2	G18	1790	514.97	1-1/2	9-1/2	22-3/16	38	19-15/16	G18	1790	505.64	2-1/2	5	10-1/4	21-1/16	23-5/8	21-1/16															
920	227-1/8	60-7/16	64-3/8	160-9-23/24	214-15-2/32	98	253-1/8	76-3/4	42	59-1/4	5-1/4	920	2700	831.87	2-1/2	10	28-9/16	45-1-2/25	9-7/16	920	2675	812.24	2-1/2	5	10-1/4	27-3/32	28-5/8	27-3/32															

UNIT INFORMATION

UNIT SIZE & QTY	MAX FILTER VELOCITY	TONAGE RANGE
20"x25"x2" (3)	8500 CFM = 406 FPM	3 Ton
16"x20"x2" (6)	6500 CFM = 358 FPM	5 Ton
16"x20"x2" (8)	6000 CFM = 429 FPM	20 Ton
20"x25"x2" (8)	8900 CFM = 348 FPM	10 Ton
16"x20"x2" (15)	81500 CFM = 572 FPM	20 Ton
		40 Ton

ROOF OPENING 2" SMALLER THAN CURB DIMENSION

ALL DIMENSIONS ARE NOMINAL AND GIVEN IN INCHES