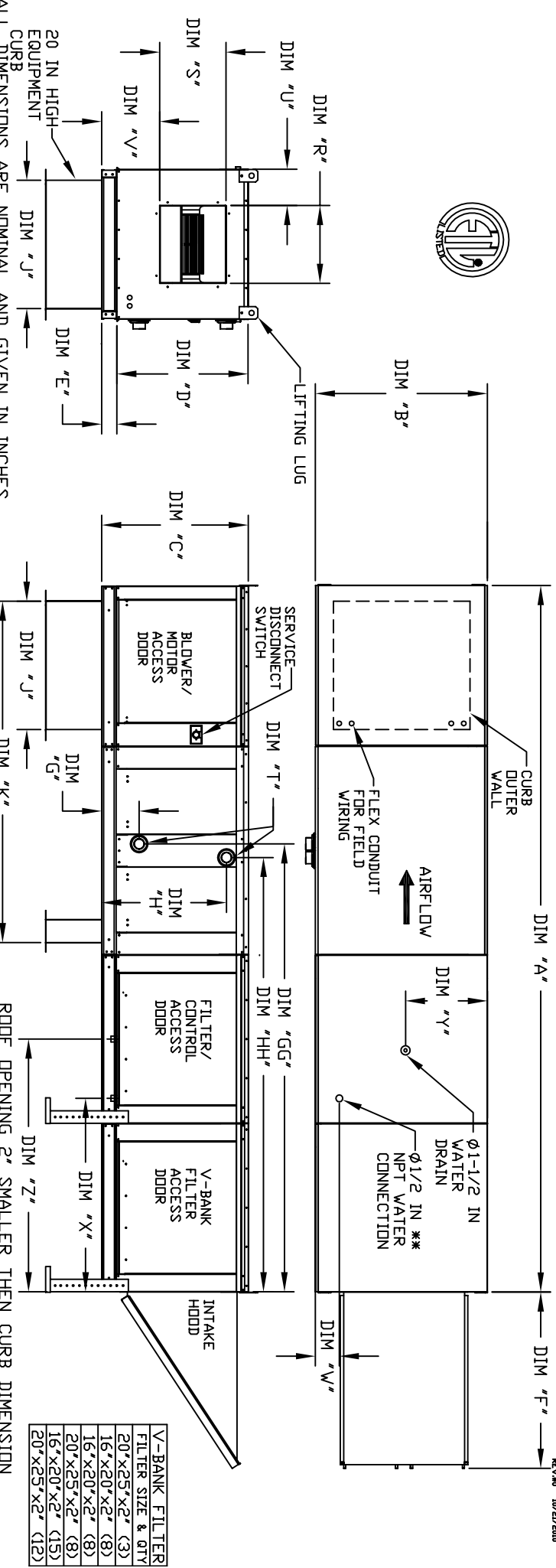


MODULAR OUTDOOR SIDE DISCHARGE BLOWER WITH V-BANK, HEATING COIL, EVAPORATIVE COOLER AND INTAKE HOOD



REV# 0 10/26/2000

ALL DIMENSIONS ARE NOMINAL AND GIVEN IN INCHES.

ROOF OPENING 2" SMALLER THEN CURB DIMENSION

MODEL	A	B	C	D	E	F	J	K	R	S	U	V	W	X	Y	Z	DISCHARGE OPENING	WATER INLET DRAIN OPENING	UNIT INFORMATION
G10	138-7/8	27-3/8	29-3/4	26-1/16	3-3/4	4/4	3/8	21	65-13/16	13 1/4	11-1/2	6-3/8	11-7/8	4-1/2	38-1/2	13	48-1/4	16"x20"x2" (3)	3500 CFM = 667 FPM
G12	146-7/8	37-3/8	36-3/4	33-1/16	3-3/4	4/5	5/8	31	74-5/8	15-3/4	13-9/16	10-1/8	13-1/16	4-1/2	38-1/2	18	48-1/4	20"x25"x2" (3)	5000 CFM = 580 FPM
G15	146-7/8	37-3/8	36-3/4	33-1/16	3-3/4	4/5	5/8	31	74-5/8	18-3/4	16	8-5/8	14-1/16	4-1/2	38-1/2	18	48-1/4	20"x25"x2" (3)	6000 CFM = 696 FPM
G18	163-7/8	41-3/8	43-3/8	38-1/16	5-1/4	5-1/8	5/8	35	79-3/16	22	19	9	17-7/8	4-1/2	44	20	57-1/4	16"x20"x2" (6)	8000 CFM = 762 FPM
G20	189-1/4	48-7/16	51-3/8	46-1/8	5-1/4	7/6	3/8	42	104-9/32	24-7/8	24-7/8	11-1/16	19-1/8	4-1/2	41-1/8	23-1/2	52-7/8	16"x20"x2" (10)	15000 CFM = 857 FPM
G25	199-1/4	59-3/16	58-3/8	53-1/8	5-1/4	71-3/8	5/8	52-3/4	111/4	21/32	31-3/8	13-3/16	21-9/16	4-1/2	41-1/8	28-7/8	52-7/8	20"x25"x2" (8)	22000 CFM = 957 FPM

MODEL	TOTAL CAPACITY (MBHD)	PIPE CONNECTION	STEAM	STEAM	STEAM	STEAM	STEAM	STEAM	STEAM	STEAM	STEAM	STEAM	STEAM	STEAM	STEAM	STEAM	STEAM	STEAM	STEAM	
G10	165.63	2"	8-1/4	84-11/16	24-3/4	48-1-15/16	G10	176.49	2-1/2	8-3/4	83-5/16	16-15/16	83-5/16	G10	176.49	2-1/2	8-3/4	83-5/16	16-15/16	83-5/16
G12	320.88	2"	8-1/4	84-11/16	28-3/4	48-1-15/16	G12	328.19	2-1/2	8-3/4	83-5/16	18-3/8	83-5/16	G12	328.19	2-1/2	8-3/4	83-5/16	18-3/8	83-5/16
G15	320.88	2"	8-1/4	84-11/16	28-3/4	48-1-15/16	G15	328.19	2-1/2	8-3/4	83-5/16	18-3/8	83-5/16	G15	328.19	2-1/2	8-3/4	83-5/16	18-3/8	83-5/16
G18	514.97	1-1/2"	9-1/2	96-7/16	38	94-3/16	G18	505.64	2-1/2	10-1/4	95-5/16	23-5/8	95-5/16	G18	505.64	2-1/2	10-1/4	95-5/16	23-5/8	95-5/16
G20	831.87	2-1/2"	10	97-1/16	45-1/2	94-1/16	G20	812.24	2-1/2	10-1/4	95-5/8	28-5/8	95-5/8	G20	812.24	2-1/2	10-1/4	95-5/8	28-5/8	95-5/8
G25	1230.16	3"	10-1/4	96-11/16	52-1/4	93-13/16	G25	1234.45	2-1/2	10-1/4	95-5/8	31-3/4	95-5/8	G25	1234.45	2-1/2	10-1/4	95-5/8	31-3/4	95-5/8

MODEL	TOT. WEIGHT	STEAM	MAX. FLOW RATE	MODEL	TOT. WEIGHT	STEAM	MAX. FLOW RATE
HOT G10	635 LBS	20"x25"x2" (3)	406 FPM	HOT G10	640 LBS	20"x25"x2" (3)	406 FPM
WATER G12	950 LBS	16"x20"x2" (8)	358 FPM	WATER G12	945 LBS	16"x20"x2" (8)	358 FPM
COIL G15	960 LBS	16"x20"x2" (8)	429 FPM	COIL G15	955 LBS	16"x20"x2" (8)	429 FPM
MODULE G18	1190 LBS	20"x25"x2" (8)	348 FPM	MODULE G18	1180 LBS	20"x25"x2" (8)	348 FPM
MODULE G20	1945 LBS	20"x25"x2" (15)	572 FPM	MODULE G20	1915 LBS	20"x25"x2" (15)	572 FPM
MODULE G25	2555 LBS	20"x25"x2" (12)	638 FPM	MODULE G25	2515 LBS	20"x25"x2" (12)	638 FPM

REV# 0 10/26/2000