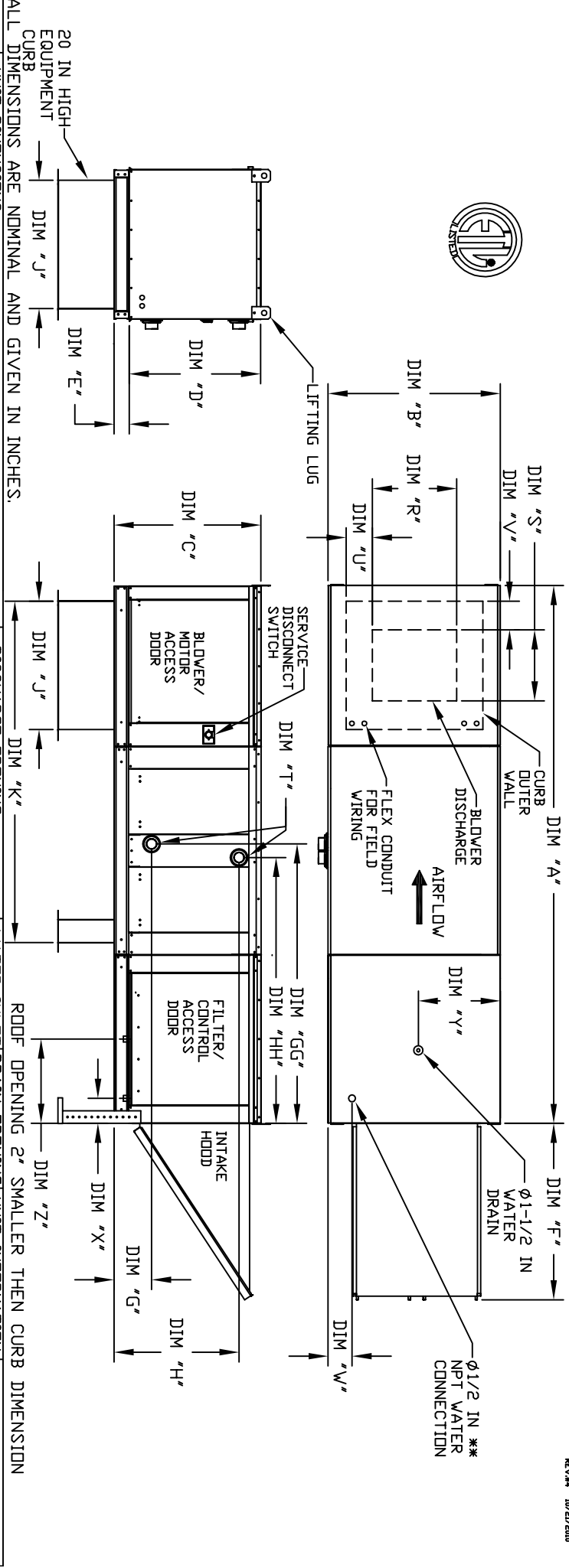


MODULAR OUTDOOR DOWN DISCHARGE BLOWER WITH HEATING COIL, EVAPORATIVE COOLER AND INTAKE HOOD

REV. 04/10/2010



20 IN HIGH EQUIPMENT CURB  
 ALL DIMENSIONS ARE NOMINAL AND GIVEN IN INCHES.

ROOF OPENING 2" SMALLER THEN CURB DIMENSION

MODEL	A	B	C	D	E	F	J	K	R	S	U	V	W	X	Y	Z	UNIT INFORMATION
G10	106-5/8	27-3/8	29-3/4	26-1/16	3-3/4	44-3/8	21	65-13/16	13-1/4	11-1/2	3-7/8	1-3/4	4-1/2	6-1/4	13	16	16"x20"x2" (3)
G12	114-5/8	37-3/8	36-3/4	33-1/16	3-3/4	45-5/8	31	74-5/8	15-3/4	13-9/16	7-5/8	1-15/16	4-1/2	6-1/4	18	16	20"x25"x2" (3)
G15	114-5/8	37-3/8	36-3/4	33-1/16	3-3/4	45-5/8	31	74-5/8	18-3/4	13-9/16	7-5/8	1-15/16	4-1/2	6-1/4	18	16	20"x25"x2" (3)
G18	125-5/8	41-3/8	43-3/8	38-1/16	5-1/4	51-5/8	35	79-3/16	22	19	6-1/2	7	4-1/2	5-3/4	19	16	16"x20"x2" (6)
G20	153-7/8	48-7/16	51-3/8	46-1/8	5-1/4	76-3/8	42	104-9/32	24-7/8	24-7/8	8-9/16	1-1/8	4-1/2	5-3/4	23-1/2	17-1/2	16"x20"x2" (10)
G25	163-7/8	59-3/16	58-3/8	53-1/8	5-1/4	71-3/8	52-3/4	111-4/16	21-3/2	31-3/8	10-11/16	1-13/16	4-1/2	5-3/4	28-7/8	17-1/2	20"x25"x2" (8)

MODEL	TOTAL CAPACITY (MBH)	PIPE CONNECTION	T" (MPT)	G	GG	H	HH	MODEL	TOTAL CAPACITY (MBH)	PIPE CONNECTION	T" (MPT)	PSI	G	GG	H	HH
G10	165.63	2"	8-1/4	52-7/16	24-3/4	49-11/16	G10	176.49	2-1/2"	2-1/2"	5	8-3/4	51-1/16	16-15/16	51-1/16	
G12	320.88	2"	8-1/4	52-7/16	28-3/4	49-11/16	G12	328.19	2-1/2"	2-1/2"	5	8-3/4	51-1/16	18-3/8	51-1/16	
G15	320.88	2"	8-1/4	52-7/16	28-3/4	49-11/16	G15	328.19	2-1/2"	2-1/2"	5	8-3/4	51-1/16	18-3/8	51-1/16	
G18	514.97	1-1/2"	9-1/2	58-3/16	38	55-15/16	G18	505.64	2-1/2"	2-1/2"	5	10-1/4	57-1/16	23-5/8	57-1/16	
G20	831.87	2-1/2"	10	61-11/16	45-1/2	58-11/16	G20	812.24	2-1/2"	2-1/2"	5	10-1/4	60-7/32	28-5/8	60-7/32	
G25	1230.16	3"	10-1/4	61-5/16	52-1/4	58-7/16	G25	1234.45	2-1/2"	2-1/2"	5	10-1/4	60-7/32	31-3/4	60-7/32	

MODEL	TOT. WEIGHT	STEAM	HOT WATER	COIL	MODULE	TOT. WEIGHT	STEAM	HOT WATER	COIL	MODULE
G10	540 LBS	20"x25"x2" (3)	825 LBS	16"x20"x2" (8)	1685 LBS	545 LBS	20"x24"x12"	810 LBS	25"x32"x12"	1655 LBS
G12	815 LBS	16"x20"x2" (8)	825 LBS	16"x20"x2" (8)	1685 LBS	810 LBS	25"x32"x12"	820 LBS	30"x36"x12"	1680 LBS
G15	825 LBS	16"x20"x2" (8)	825 LBS	16"x20"x2" (8)	1685 LBS	820 LBS	25"x32"x12"	820 LBS	30"x36"x12"	1680 LBS
G18	1025 LBS	20"x25"x2" (8)	1020 LBS	20"x25"x2" (8)	1685 LBS	1010 LBS	30"x36"x12"	1010 LBS	30"x36"x12"	1680 LBS
G20	1710 LBS	20"x25"x2" (15)	1685 LBS	20"x25"x2" (15)	2255 LBS	1680 LBS	30"x36"x12"	1685 LBS	30"x36"x12"	2220 LBS
G25	2260 LBS	20"x25"x2" (12)	2255 LBS	20"x25"x2" (12)	2255 LBS	2220 LBS	45"x54"x12"	2215 LBS	45"x54"x12"	2220 LBS

MAX. FLOW RATE