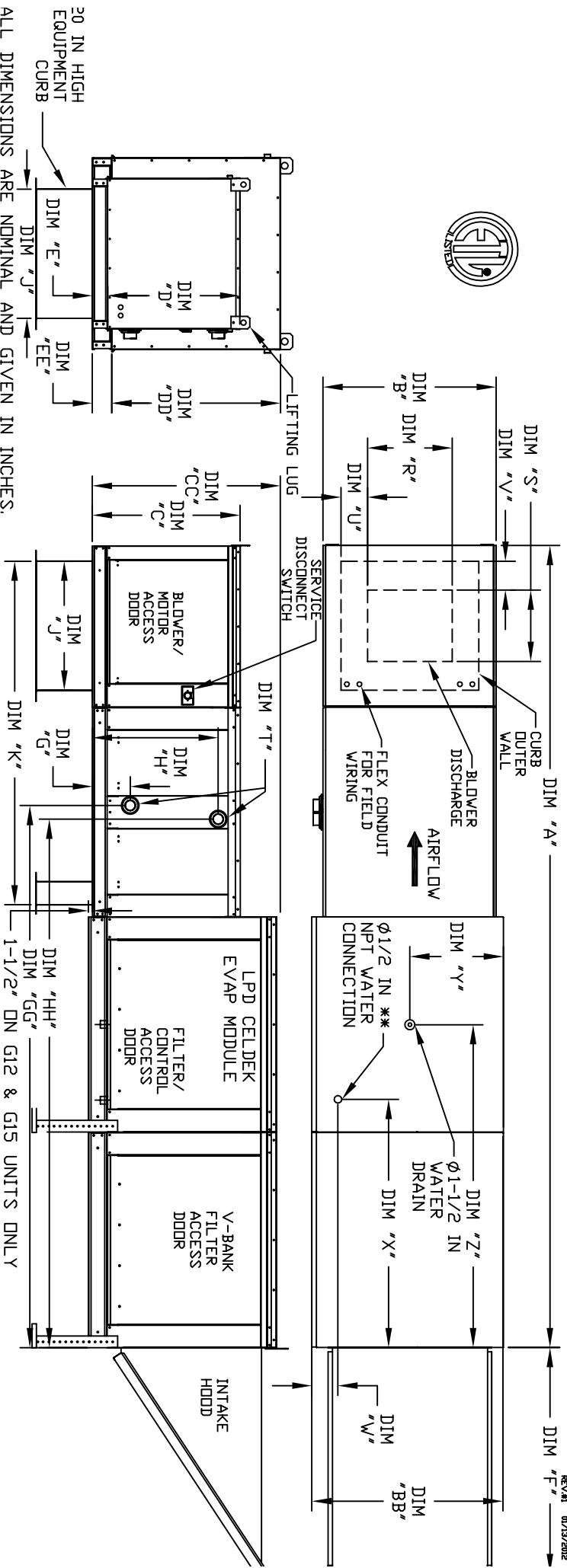


MODULAR OUTDOOR DOWN DISCHARGE BLOWER WITH V-BANK, HEATING COIL, LPD EVAPORATIVE COOLER AND INTAKE HOOD



ALL DIMENSIONS ARE NOMINAL AND GIVEN IN INCHES.

MODEL	A	B	BB	C	CC	D	DD	E	EE	F	J	K	R	S	U	V	W	X	Y	Z
G10	138-7/8	27-3/8	36-3/4	29-3/4	36-3/4	26-1/16	33	3-3/4	3-3/4	5/8	21	71	13-1/4	11-1/2	3-7/8	1-3/4	4-1/2	38-1/2	18	48-1/4
G12	158-7/8	37-3/8	40-3/4	36-3/4	43-3/8	33-1/16	38-1/8	3-3/4	5-1/4	5/8	31	79	15-3/4	13-9/16	7-5/8	7-15/16	4-1/2	44	20	57-1/4
G15	158-7/8	37-3/8	40-3/4	43-3/8	33-1/16	38-1/8	33-1/16	3-3/4	5-1/4	5/8	31	79	18-3/4	16	6-1/8	5-1/2	4-1/2	44	20	57-1/4
G18	158-1/8	41-3/8	47-7/8	43-3/8	38-1/16	46-1/8	5-1/4	5-1/4	7/8	3/8	35	84	22	19	6-1/2	7	4-1/2	41-1/8	23-1/2	52-7/8
920	189-1/4	48-7/16	58-5/8	51-3/8	38-1/8	46-1/8	5-1/4	5-1/4	7/8	3/8	42	115-3/16	24-7/8	24-7/8	8-9/16	1-1/8	4-1/2	41-1/8	28-7/8	52-7/8
925	199-1/4	59-3/16	74-7/8	58-3/8	38-1/8	53-1/8	5-1/4	5-1/4	7/8	3/8	42	125-3/16	31-3/8	31-3/8	10-11/16	3-13/16	4-1/2	41-1/8	31-1/2	52-7/8

HOT WATER COIL MODULE

MODEL	TOTAL CAPACITY (MBH)	PIPE CONNECTION	STEAM	WATER INLET DRAIN OPENING
G10	165.63	2	8-1/4	8-3/4
G12	320.88	2	8-1/4	8-3/4
G15	320.88	2	8-1/4	8-3/4
G18	514.97	1-1/2	9-1/2	5
920	831.87	2-1/2	10	5
925	1230.16	3	10-1/4	10-1/4

STEAM COIL MODULE

MODEL	TOTAL CAPACITY (MBH)	PIPE CONNECTION	STEAM	WATER INLET DRAIN OPENING
G10	176.49	2-1/2	5	8-3/4
G12	328.19	2-1/2	5	8-3/4
G15	328.19	2-1/2	5	8-3/4
G18	505.64	2-1/2	5	8-3/4
920	812.24	2-1/2	5	8-3/4
925	1234.45	2-1/2	5	8-3/4

MODEL	FILTER SIZE & QTY	HOT WATER COIL MODULE	STEAM COIL MODULE	CELDEK EVAPORATIVE COOLING UNIT	V-BANK
G10	20"x25"x2" (3)	G10 740 LBS	G10 740 LBS	740 LBS	16"x20"x2" (8)
G12	16"x20"x2" (6)	G12 1055 LBS	G12 1055 LBS	1055 LBS	20"x25"x2" (8)
G15	16"x20"x2" (6)	G15 1065 LBS	G15 1065 LBS	1065 LBS	20"x25"x2" (8)
G18	16"x20"x2" (10)	G18 1440 LBS	G18 1435 LBS	1435 LBS	16"x20"x2" (15)
920	20"x25"x2" (8)	920 2055 LBS	920 2030 LBS	2030 LBS	20"x25"x2" (12)
925	20"x25"x2" (8)	925 2650 LBS	925 2645 LBS	2645 LBS	20"x25"x2" (12)

MAX. ROOF OPENING 2" SMALLER THEN CURB OUTSIDE DIMENSION  
 MAX. MAX. FLVAD /VATED DIRECTION - 50 PSI @ 70 MFC C