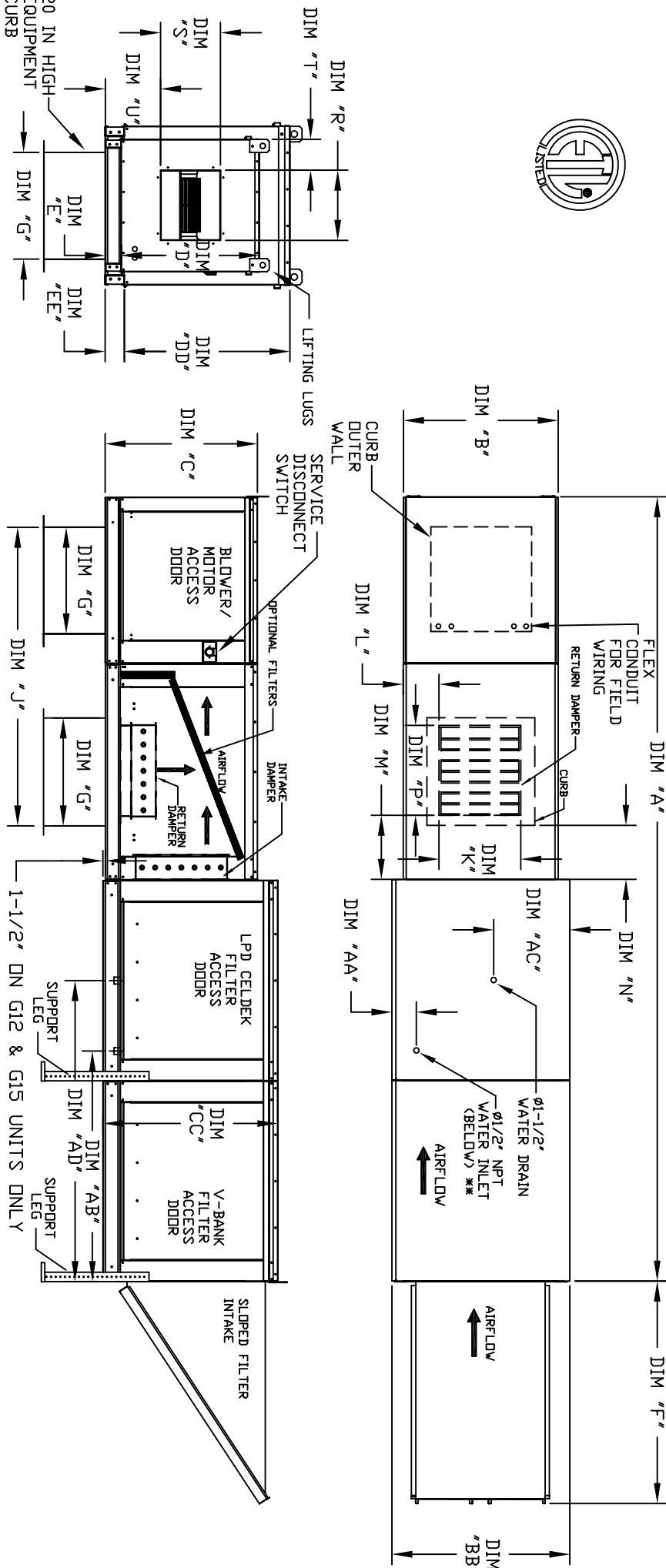


MODULAR OUTDOOR SIDE DISCHARGE BLOWER WITH V-BANK, LPD EVAPORATIVE COOLER, MIXING BOX AND INTAKE HOOD

REV: 01/09/2010
REV: 01/09/2010



ALL DIMENSIONS ARE NOMINAL AND GIVEN IN INCHES.

MODEL	A	B	BB	C	CC	D	DD	E	EE	F	G	J	K	L	M	N	P	R	S	T	U
G10	138-7/8	27-3/8	37-3/8	29-3/4	36-3/4	26-1/16	33	3-3/4	3-3/4	53-5/8	21	56-3/8	14	8	14	12-1/2	18	13-1/4	11-1/2	6-3/8	11-7/8
G12	158-7/8	37-3/8	41-3/8	36-3/4	44-3/8	33-1/16	38-1/8	3-3/4	5-1/4	51-5/8	31	70-5/16	22-3/4	8	11	7-1/2	24	15-3/4	13-9/16	10-1/8	13-1/16
G15	158-7/8	37-3/8	41-3/8	36-3/4	44-3/8	33-1/16	38-1/8	3-3/4	5-1/4	51-5/8	31	70-5/16	22-3/4	8	11	7-1/2	24	15-3/4	13-9/16	10-1/8	13-1/16
G18	158-1/8	41-3/8	48-7/16	43-3/8	51-3/8	38-1/16	46-1/8	5-1/4	5-1/4	76-3/8	35	77-7/8	28	8	7	4-1/2	30	22	19	9	17-7/8
G20	189-1/4	48-7/16	59-3/16	51-3/8	58-3/8	46-1/8	53-1/8	5-1/4	5-1/4	71-3/8	42	99-3/8	33	10	11	8	36	24-7/8	24-7/8	11-1/16	19
G25	199-1/4	59-3/16	74-7/8	58-3/8	66-1/8	53-1/8	61-1/8	5-1/4	5-1/4	71-3/8	52-3/4	116-9/16	43	10	11	8	43	31-3/8	31-3/8	13-3/8	21-1/4

UNIT INFORMATION

MODEL	LPD CELDEK EVAPORATIVE COOLING UNIT	WATER INLET	DRAIN OPENING	OPTIONAL MIXING BOX FILTERS	V-BANK						
	FILTER SIZE & QTY	AA	AB	AC	AD						
	TOT. WEIGHT MEDIA SIZE & QTY	NOZZLES	MAX. FLOW RATE								
G10	20"x25"x2" (3)	735 LBS	25"x32"x12"	20	6.5 GPH	4-1/2	38-1/2	18	48-1/4	10"x16"x2" (5)	16"x20"x2" (8)
G12	16"x20"x2" (6)	1050 LBS	30"x36"x12"	28	8.4 GPH	4-1/2	44	20	57-1/4	20"x25"x2" (2), 16"x25"x2" (1)	20"x25"x2" (8)
G15	16"x20"x2" (6)	1060 LBS	30"x36"x12"	28	8.4 GPH	4-1/2	44	20	57-1/4	20"x25"x2" (2), 16"x25"x2" (1)	20"x25"x2" (8)
G18	16"x20"x2" (10)	1460 LBS	38"x43"x12"	35	10.15 GPH	4-1/2	41-1/8	23-1/2	52-7/8	15"x20"x2" (4), 15"x15"x2" (2)	16"x20"x2" (15)
G20	20"x25"x2" (8)	2095 LBS	45"x54"x12"	42	12.6 GPH	4-1/2	41-1/8	28-7/8	52-7/8	18"x25"x2" (4), 16"x20"x2" (2)	20"x25"x2" (12)
G25	20"x25"x2" (8)	2700 LBS	45"x72"x12"	57	20.1 GPH	4-1/2	41-1/8	37-1/2	52-7/8	14.5"x19"x2" (12)	20"x25"x2" (12)

** MAX EVAP WATER PRESSURE = 50 PSI @ 70 DEG F
 *** DRAIN MEDIA SIZE & QTY SMALLER THAN MEDIA SIZE & QTY