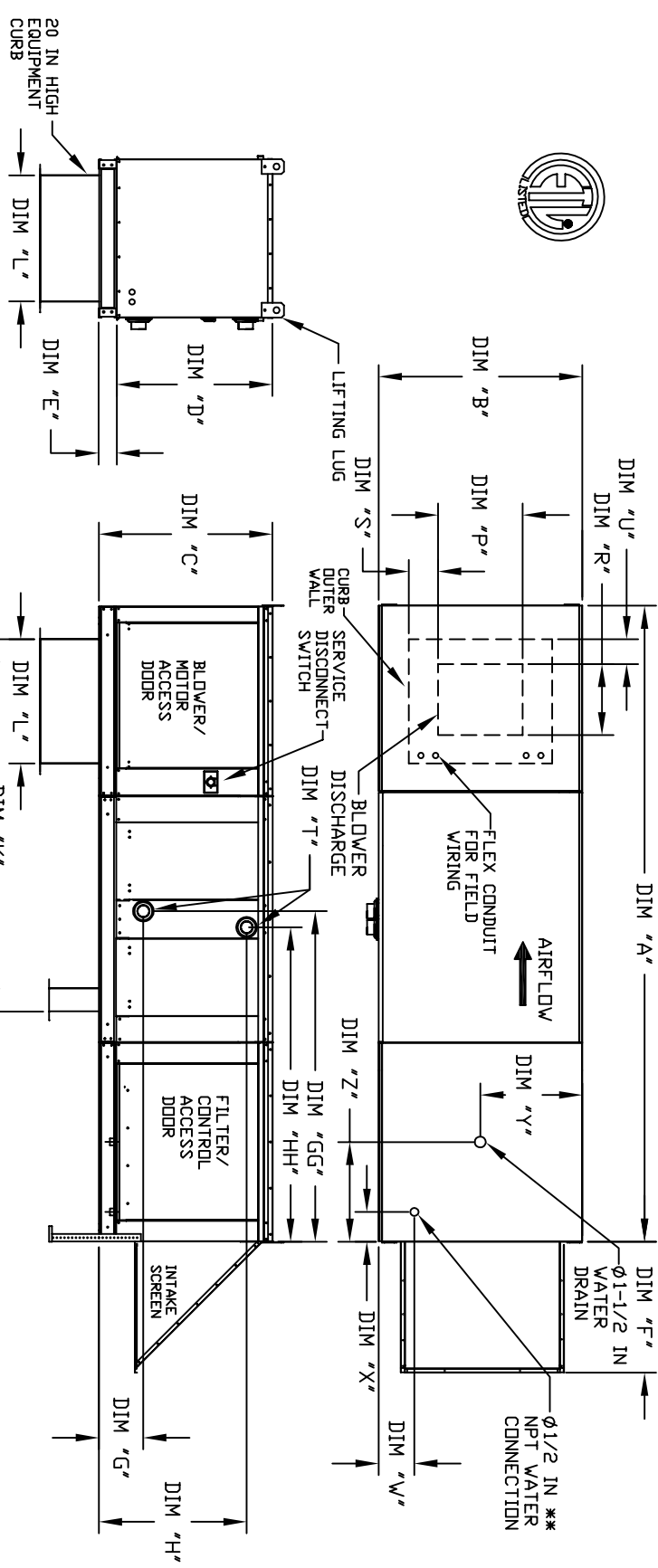


MODULAR OUTDOOR DOWN DISCHARGE BLOWER WITH HEATING COIL, EVAPORATIVE COOLER AND SCREEN INTAKE

3530204
REV#4 10/28/2010



ALL DIMENSIONS ARE NOMINAL AND GIVEN IN INCHES.

ROOF OPENING 2" SMALLER THEN CURB DIMENSION

MODEL	A	B	C	D	E	F	G	GG	H	HH	L	P	R	S	U	W	X	Y	Z
G10	106-5/8	27-3/8	29-3/4	26-1/16	3-3/4	22-3/8	65-13/16	21	13-1/4	11-1/2	3-7/8	1-3/4	4-1/2	6-1/4	13	13	16	16	
G12	114-5/8	37-3/8	36-3/4	33-1/16	3-3/4	30-5/16	74-5/8	31	15-3/4	13-9/16	7-5/8	1-15/16	4-1/2	6-1/4	18	18	16	16	
G15	114-5/8	37-3/8	36-3/4	33-1/16	3-3/4	30-5/16	74-5/8	31	15-3/4	13-9/16	7-5/8	1-15/16	4-1/2	6-1/4	18	18	16	16	
G18	125-5/8	41-3/8	43-3/8	38-1/16	5-1/4	34-3/16	79-3/16	35	18-3/4	16	6-1/8	5-1/2	4-1/2	6-1/4	20	20	19	19	
920	153-7/8	48-7/16	51-3/8	46-1/8	5-1/4	47-1/4	104-9/32	42	24-7/8	24-7/8	8-9/16	1-1/8	4-1/2	5-3/4	23-1/2	17-1/2	17-1/2	17-1/2	
925	163-7/8	59-3/16	58-3/8	53-1/8	5-1/4	49-1/2	114-21/32	52	31-3/8	31-3/8	10-11/16	1-13/16	4-1/2	5-3/4	28-7/8	17-1/2	17-1/2	17-1/2	

HOT WATER COIL MODULE										STEAM COIL MODULE										
MODEL	TOTAL CAPACITY (MBH)	PIPE CONNECTION	TOTAL CAPACITY (MBH)	PIPE CONNECTION	MODEL	TOTAL CAPACITY (MBH)	PIPE CONNECTION	MODEL	TOTAL CAPACITY (MBH)	PIPE CONNECTION	MODEL	TOTAL CAPACITY (MBH)	PIPE CONNECTION	MODEL	TOTAL CAPACITY (MBH)	PIPE CONNECTION	MODEL	TOTAL CAPACITY (MBH)	PIPE CONNECTION	
G10	165.63	2"	G10	176.49	2-1/2"	G10	176.49	2-1/2"	G10	176.49	2-1/2"	G10	176.49	2-1/2"	G10	176.49	2-1/2"	G10	176.49	2-1/2"
G12	320.88	2"	G12	328.19	2-1/2"	G12	328.19	2-1/2"	G12	328.19	2-1/2"	G12	328.19	2-1/2"	G12	328.19	2-1/2"	G12	328.19	2-1/2"
G15	320.88	2"	G15	328.19	2-1/2"	G15	328.19	2-1/2"	G15	328.19	2-1/2"	G15	328.19	2-1/2"	G15	328.19	2-1/2"	G15	328.19	2-1/2"
G18	514.97	1-1/2"	G18	505.64	2-1/2"	G18	505.64	2-1/2"	G18	505.64	2-1/2"	G18	505.64	2-1/2"	G18	505.64	2-1/2"	G18	505.64	2-1/2"
920	831.87	2-1/2"	920	812.24	2-1/2"	920	812.24	2-1/2"	920	812.24	2-1/2"	920	812.24	2-1/2"	920	812.24	2-1/2"	920	812.24	2-1/2"
925	1230.16	3"	925	1234.45	2-1/2"	925	1234.45	2-1/2"	925	1234.45	2-1/2"	925	1234.45	2-1/2"	925	1234.45	2-1/2"	925	1234.45	2-1/2"

STANDARD EVAPORATIVE COOLING UNIT W/										CELDEK EVAPORATIVE COOLING UNIT W/														
MODEL	TOT. WEIGHT	MEDIA SIZE & QTY	VEL.	MAX. CFM	NOZZLES	MAX. FLOW RATE	MODEL	TOT. WEIGHT	MEDIA SIZE & QTY	VEL.	MAX. CFM	NOZZLES	MAX. FLOW RATE	MODEL	TOT. WEIGHT	MEDIA SIZE & QTY	VEL.	MAX. CFM	NOZZLES	MAX. FLOW RATE				
G10	520 LBS	20"x25"x2"	(3)	406 FPM	6	3 GPH	G10	525 LBS	20"x24"x12"	1050 FPM	12	3.9 GPH	G10	525 LBS	20"x24"x12"	1050 FPM	12	3.9 GPH	G10	525 LBS	20"x24"x12"	1050 FPM	12	3.9 GPH
G12	785 LBS	16"x20"x2"	(8)	358 FPM	10	5 GPH	G12	780 LBS	25"x32"x12"	900 FPM	20	6.5 GPH	G12	780 LBS	25"x32"x12"	900 FPM	20	6.5 GPH	G12	780 LBS	25"x32"x12"	900 FPM	20	6.5 GPH
G15	795 LBS	16"x20"x2"	(8)	429 FPM	10	5 GPH	G15	790 LBS	25"x32"x12"	1080 FPM	20	6.5 GPH	G15	790 LBS	25"x32"x12"	1080 FPM	20	6.5 GPH	G15	790 LBS	25"x32"x12"	1080 FPM	20	6.5 GPH
G18	985 LBS	20"x25"x2"	(8)	348 FPM	14	7 GPH	G18	975 LBS	30"x36"x12"	1067 FPM	28	8.4 GPH	G18	975 LBS	30"x36"x12"	1067 FPM	28	8.4 GPH	G18	975 LBS	30"x36"x12"	1067 FPM	28	8.4 GPH
920	1600 LBS	20"x25"x2"	(15)	572 FPM	24	12 GPH	920	1570 LBS	45"x54"x12"	1362 FPM	35	10.15 GPH	920	1570 LBS	45"x54"x12"	1362 FPM	35	10.15 GPH	920	1570 LBS	45"x54"x12"	1362 FPM	35	10.15 GPH
925	2170 LBS	20"x25"x2"	(12)	638 FPM	30	15 GPH	925	2130 LBS	45"x54"x12"	1304 FPM	42	12.6 GPH	925	2130 LBS	45"x54"x12"	1304 FPM	42	12.6 GPH	925	2130 LBS	45"x54"x12"	1304 FPM	42	12.6 GPH