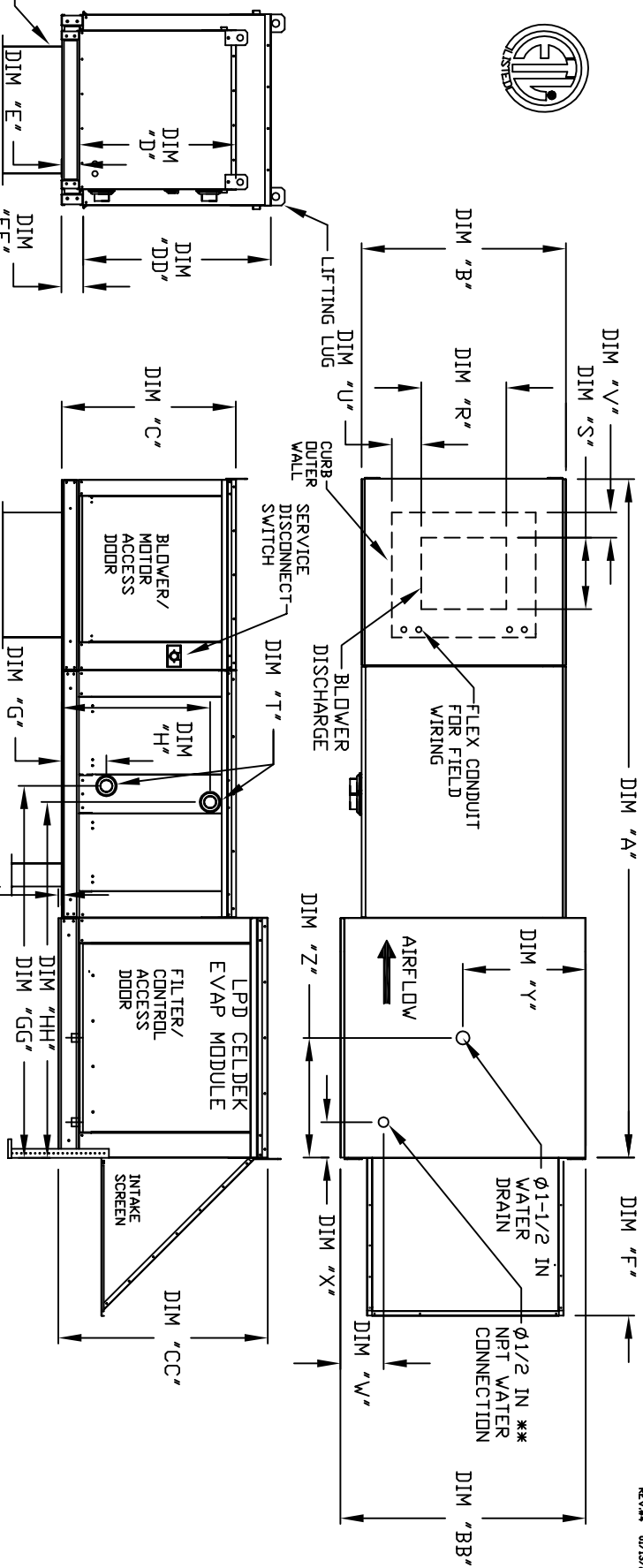


MODULAR OUTDOOR DOWN DISCHARGE BLOWER WITH HEATING COIL, LPD EVAPORATIVE COOLER AND SCREEN INTAKE

SUNPAC/CHAM
REV#4 01/13/2012



ALL DIMENSIONS ARE NOMINAL AND GIVEN IN INCHES.

MODEL	UNIT DIMENSIONS												DISCHARGE OPENING												WATER INLET DRAIN OPENING											
MODEL	A	B	BB	C	CC	D	DD	E	EE	F	J	K	R	S	U	V	W	X	Y	Z	MODEL	TOTAL CAPACITY (MBH)	PIPE CONNECTION	STEAM PSI	G	GG	H	HH								
G10	106-5/8	27-3/8	36-3/4	29-3/4	36-3/4	26-1/16	33	3-3/4	3-3/4	430-5/16	21	71	13-1/4	11-1/2	3-7/8	1-3/4	4-1/2	6-1/4	18	15	G10	176.49	2-1/2	5	8-3/4	53-5/16	16-15/16	53-5/16	59-5/16							
G12	120-5/8	37-3/8	40-3/4	36-3/4	43-3/8	33-1/16	38-1/8	3-3/4	5-1/4	434-3/16	31	79	15-3/4	13-9/16	7-5/8	7-15/16	4-1/2	5-3/4	20	19	G12	328.19	2-1/2	5	8-3/4	59-5/16	18-3/8	59-5/16	59-5/16							
G15	120-5/8	37-3/8	40-3/4	36-3/4	43-3/8	33-1/16	38-1/8	3-3/4	5-1/4	434-3/16	31	79	15-3/4	13-9/16	7-5/8	7-15/16	4-1/2	5-3/4	20	19	G15	328.19	2-1/2	5	8-3/4	59-5/16	18-3/8	59-5/16	59-5/16							
G18	122-3/4	41-3/8	47-7/8	47-7/8	43-3/8	38-1/16	46-1/8	5-1/4	5-1/4	447-1/4	35	84	18-3/4	16	6-1/8	5-1/2	4-1/2	5-3/4	20	19	G18	505.64	2-1/2	5	10-1/4	56-7/16	23-5/8	56-7/16	56-7/16							
920	153-7/8	48-7/16	58-5/8	51-3/8	58-3/8	46-1/8	53-1/8	5-1/4	5-1/4	449-5/8	42	115-3/16	24-7/8	24-7/8	8-9/16	1-1/8	4-1/2	5-3/4	28-7/8	17-1/2	920	812.24	2-1/2	5	10-1/4	62-15/32	28-5/8	62-15/32	62-15/32							
925	163-7/8	59-3/16	74-7/8	58-3/8	64-3/16	53-1/8	53-1/8	5-1/4	5-1/4	449-5/8	42	125-3/16	31-3/8	31-3/8	10-11/16	13-1/16	4-1/2	5-3/4	37-1/2	17-1/2	925	1234.45	2-1/2	5	10-1/4	62-15/32	31-3/4	62-15/32	62-15/32							

MODEL	TOTAL CAPACITY PIPE CONNECTION												STEAM											
MODEL	(MBH)	T" (MPT)	G	GG	H	HH	MODEL	TOTAL CAPACITY (MBH)	PIPE CONNECTION	STEAM PSI	G	GG	H	HH										
G10	165.63	2	8-1/4	54-11/16	24-3/4	51-15/16	G10	176.49	2-1/2	5	8-3/4	53-5/16	16-15/16	53-5/16										
G12	320.88	2	8-1/4	60-11/16	28-3/4	57-15/16	G12	328.19	2-1/2	5	8-3/4	59-5/16	18-3/8	59-5/16										
G15	320.88	2	8-1/4	60-11/16	28-3/4	57-15/16	G15	328.19	2-1/2	5	8-3/4	59-5/16	18-3/8	59-5/16										
G18	514.97	2-1/2	9-1/2	57-9/16	38	55-5/16	G18	505.64	2-1/2	5	10-1/4	56-7/16	23-5/8	56-7/16										
920	831.87	3	10	63-15/16	45-1/2	60-15/16	920	812.24	2-1/2	5	10-1/4	62-15/32	28-5/8	62-15/32										
925	1230.16	3	10-1/4	64-3/16	51-1/4	60-11/16	925	1234.45	2-1/2	5	10-1/4	62-15/32	31-3/4	62-15/32										

MAX. ROOF OPENING 2" SMALLER THEN CURB OUTSIDE DIMENSION
MAX. ROOF OPENING 2" SMALLER THEN CURB OUTSIDE DIMENSION