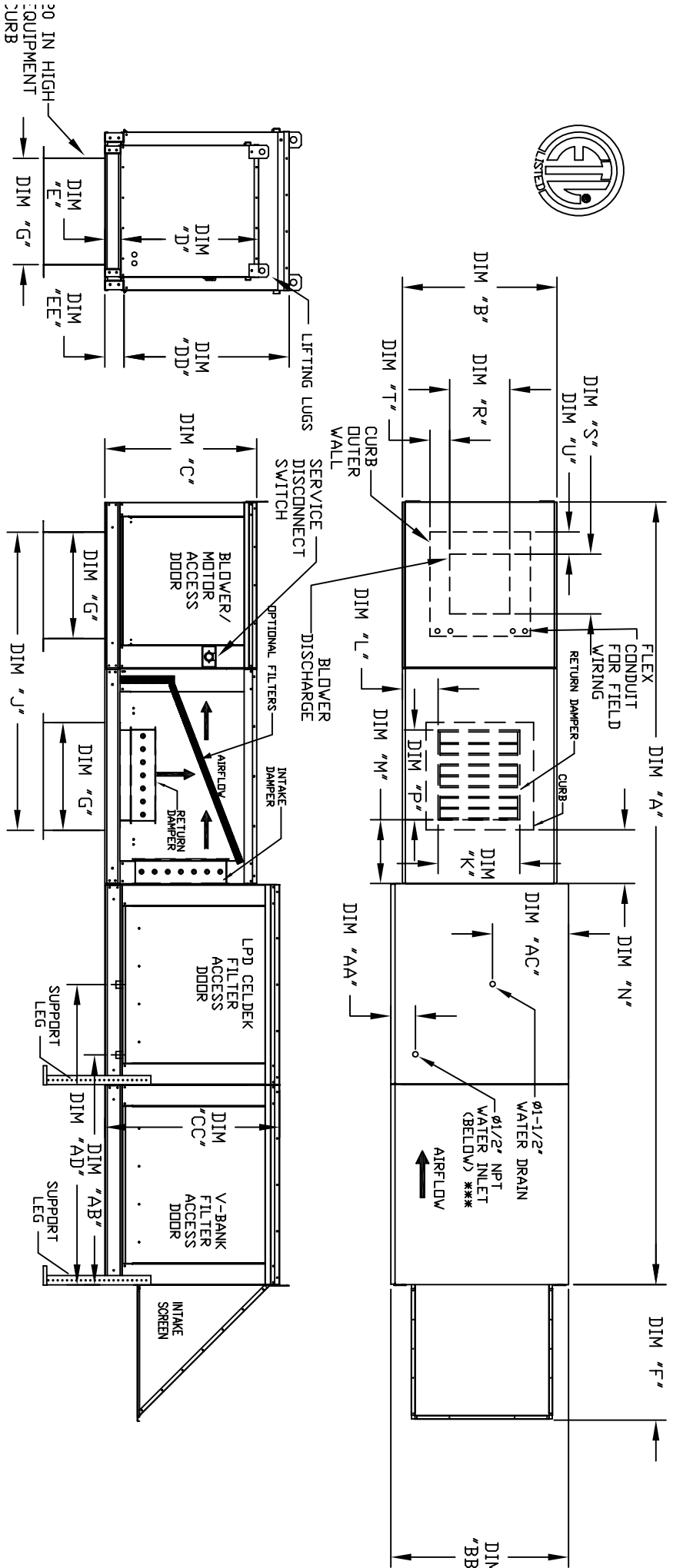


MODULAR OUTDOOR DOWN DISCHARGE BLOWER WITH V-BANK, LPD EVAPORATIVE COOLER, MIXING BOX AND SCREEN INTAKE



ALL DIMENSIONS ARE NOMINAL AND GIVEN IN INCHES.

UNIT SIZE	UNIT DIMENSIONS											RETURN OPENING						DISCHARGE OPENING					
	A	B	BB	C	CC	D	DD	E	EE	F	G	J	K	L	M	N	P	R	S	T	U		
1	138-7/8	27-3/8	37-3/8	29-3/4	36-3/4	26-1/16	33	3-3/4	3-3/4	30-5/16	21	56-3/8	14	8	14	12-1/2	18	13-1/4	11-1/2	3-7/8	1-3/4		
2**	158-7/8	37-3/8	41-3/8	36-3/4	44-3/8	33-1/16	38-1/8	3-3/4	5-1/4	34-3/16	31	70-5/16	22-3/4	8	11	7-1/2	24	15-3/4	13-9/16	7-5/8	7-15/16		
2	158-7/8	37-3/8	41-3/8	36-3/4	44-3/8	33-1/16	38-1/8	3-3/4	5-1/4	34-3/16	31	70-5/16	22-3/4	8	11	7-1/2	24	18-3/4	16	6-1/8	5-1/2		
3	158-1/8	41-3/8	48-7/16	43-3/8	51-3/8	38-1/16	46-1/8	5-1/4	5-1/4	47-1/4	35	77-7/8	28	8	7	4-1/2	30	22	19	6-1/2	7		
4	189-1/4	48-7/16	59-3/16	51-3/8	58-3/8	46-1/8	53-1/8	5-1/4	5-1/4	49-1/2	42	99-3/8	33	10	11	8	36	24-7/8	24-7/8	8-9/16	1-1/8		
5	199-1/4	59-3/16	74-7/8	58-3/8	85-3/8	53-1/8	53-1/8	5-1/4	5-1/4	49-1/2	52-3/4	116-9/16	43	10	6-1/2	1-1/4	43	31-3/8	31-3/8	10-11/16	13-1/16		

UNIT INFORMATION

UNIT SIZE	FILTER SIZE & QTY		LPD CELDEK EVAPORATIVE COOLING UNIT		WATER INLET		DRAIN OPENING		OPTIONAL MIXING BOX FILTERS		V-BANK	
	SIZE	QTY	TOT. WEIGHT	NOZZLES	AA	AB	AC	AD	SIZE	QTY	SIZE	QTY
1	20"x25"x2" (3)		705 LBS	25"x32"x12"	4-1/2	38-1/2	18	48-1/4	10"x16"x2" (5)		16"x20"x2" (8)	
2**	16"x20"x2" (6)		1010 LBS	30"x36"x12"	4-1/2	44	20	57-1/4	20"x25"x2" (2), 16"x25"x2" (1)		20"x25"x2" (8)	
2	16"x20"x2" (6)		1020 LBS	30"x36"x12"	28	8.4	28	57-1/4	20"x25"x2" (2), 16"x25"x2" (1)		20"x25"x2" (8)	
3	16"x20"x2" (10)		1350 LBS	38"x43"x12"	35	10.15	35	77-7/8	15"x20"x2" (4), 15"x15"x2" (2)		16"x20"x2" (15)	
4	20"x25"x2" (8)		2005 LBS	45"x54"x12"	42	12.6	42	99-3/8	18"x25"x2" (4), 16"x20"x2" (2)		20"x25"x2" (12)	
5	20"x25"x2" (8)		2610 LBS	45"x72"x12"	57	20.1	57	152-7/8	14.5"x19"x2" (12)		20"x25"x2" (12)	

\*\* DIMENSIONS APPLY TO UNITS WITH G12 BLOWERS ONLY  
 \*\*\* MAX EVAP WATER PRESSURE = 50 PSI @ 70 DEG F  
 LAY DOWN PACKAGING IS SMALLER THAN FLAT POSITION