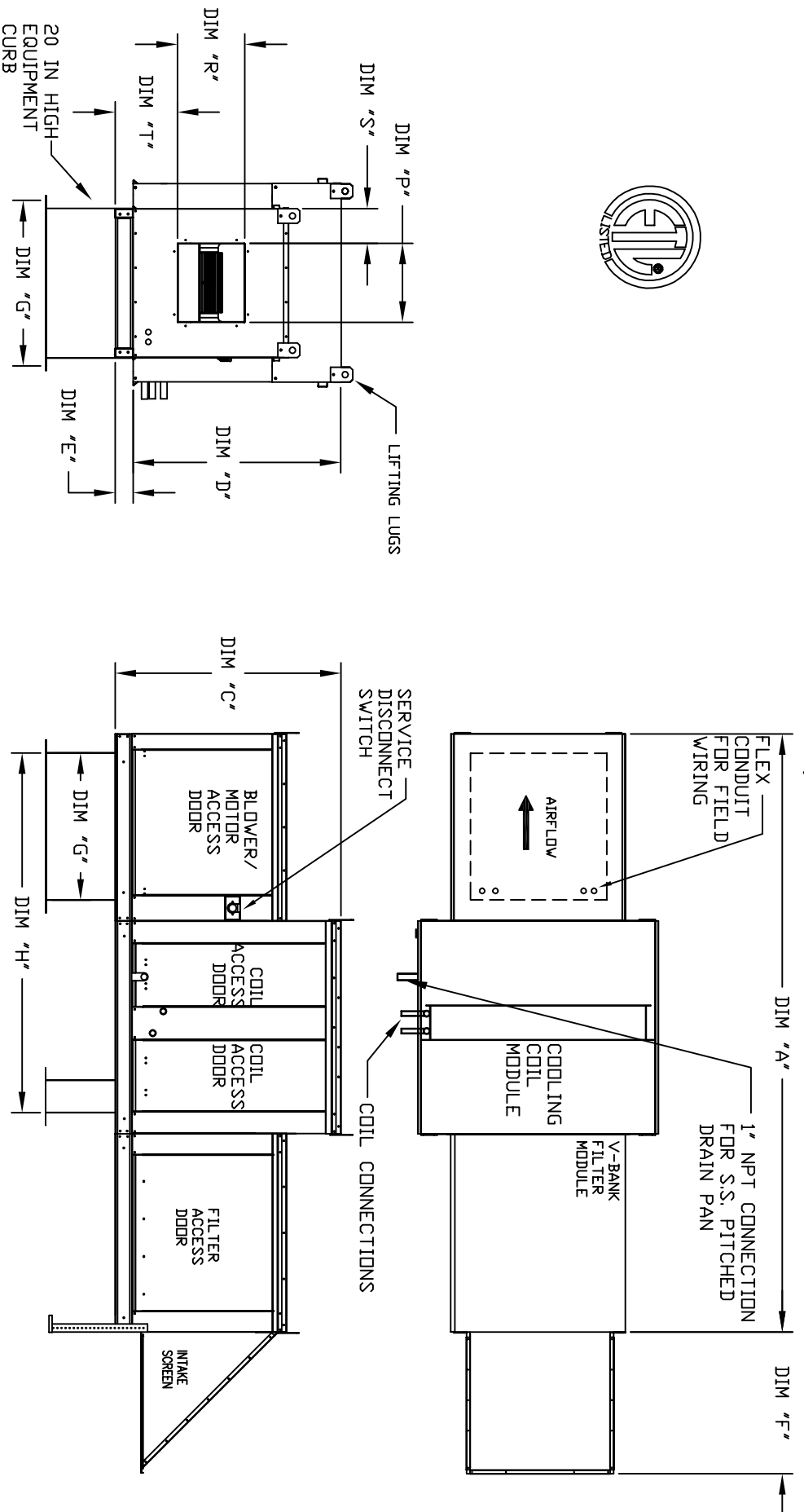


MODULAR OUTDOOR SIDE DISCHARGE BLOWER WITH COOLING COIL, V-BANK FILTER AND SCREEN INTAKE



ALL DIMENSIONS ARE NOMINAL AND GIVEN IN INCHES.

MAX. ROOF OPENING 2' SMALLER THAN CURB OUTSIDE DIMENSION

UNIT SIZE	WEIGHT	UNIT DIMENSIONS										BELT DRIVE DISCHARGE OPENING										DIRECT DRIVE DISCHARGE OPENING		TONNAGE RANGE	
		A	B	C	D	E	F	G	H	P	R	S	T	P	R	S	T	MIN	MAX						
1	680 LBS	106-5/8	39-3/8	42-3/4	39	3-3/4	22-3/8	21	71	13-1/4	11-1/2	6-3/8	11-7/8	17-1/4	15-1/2	4-3/8	8-15/16	3 Ton	12.5 Ton						
2**	950 LBS	114-5/8	49-3/8	47-3/4	44	3-3/4	30-5/16	31	79	15-3/4	13-9/16	10-1/8	13-1/16	N/A	N/A	N/A	5 Ton	20 Ton							
3	960 LBS	114-5/8	49-3/8	47-3/4	44	3-3/4	30-5/16	31	79	18-3/4	16	8-5/8	14-1/16	24-3/4	22	5-5/8	10-15/16	5 Ton	20 Ton						
4	1155 LBS	125-5/8	54-3/8	56-3/8	51-1/8	5-1/4	34-3/16	35	84	22	19	9	17-7/8	28	25	6-1/16	14-15/16	10 Ton	25 Ton						
5	1850 LBS	153-7/8	60-7/16	64-3/8	59-1/8	5-1/4	47-1/4	42	115-3/16	24-7/8	24-7/8	11-1/16	19-1/8	30	30	8-9/16	16-5/8	20 Ton	40 Ton						
	2440 LBS	163-7/8	79-7/16	68-7/16	63-3/16	5-1/4	49-1/2	52-3/4	125-3/16	31-3/8	31-3/8	13-3/16	21-9/16	35-3/8	35-3/8	11-1/4	19-10/16	30 Ton	50 Ton						

UNIT INFORMATION

UNIT SIZE	FILTER SIZE & QTY	MAX. FILTER VELOCITY
1	20"x25"x2" (3)	@3500 CFM = 406 FPM
2**	16"x20"x2" (8)	@5000 CFM = 358 FPM
2	16"x20"x2" (8)	@6000 CFM = 429 FPM
3	20"x25"x2" (8)	@8000 CFM = 348 FPM
4	16"x20"x2" (15)	@15000 CFM = 572 FPM
5	20"x25"x2" (12)	@22000 CFM = 638 FPM

** DIMENSIONS ADD 1/4" TO UNIT VENTILATION VENT FOR FIELD WIRING