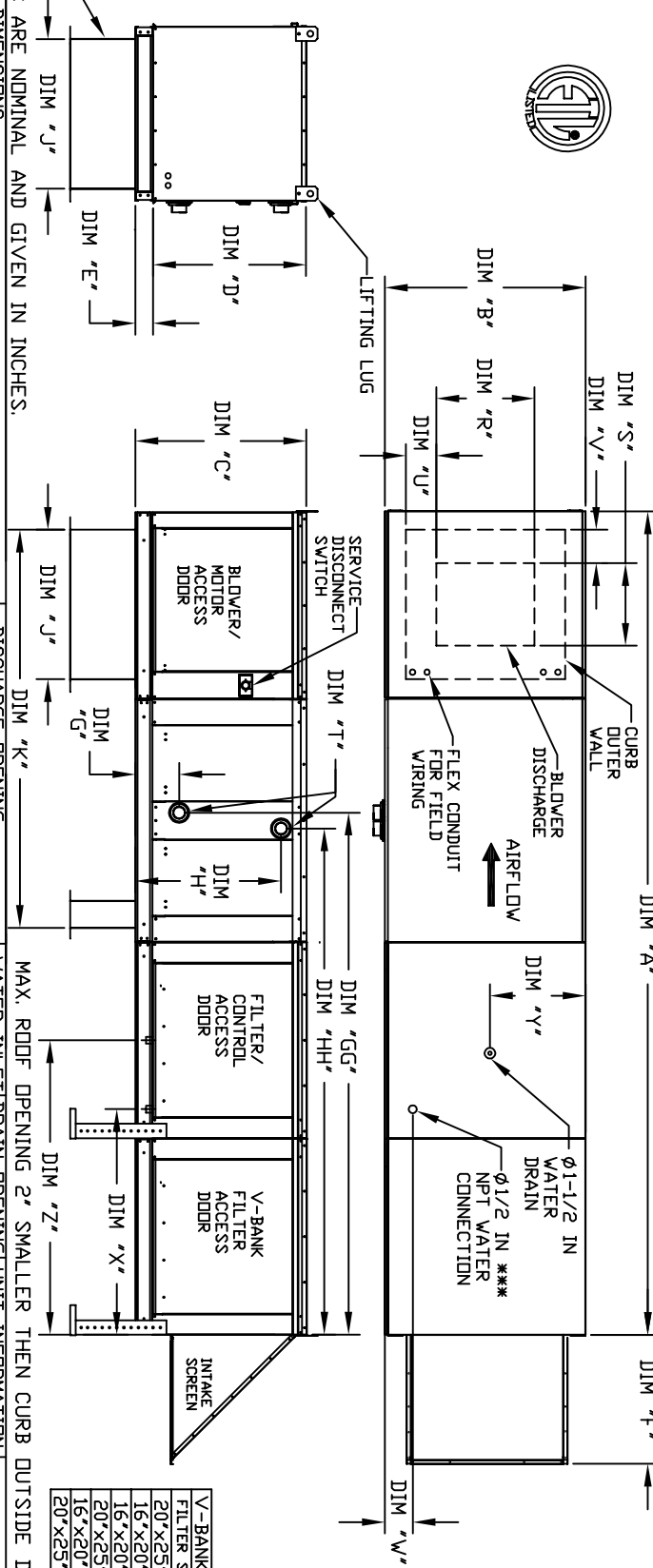


MODULAR OUTDOOR DOWN DISCHARGE BLOWER WITH V-BANK, HEATING COIL, EVAPORATIVE COOLER AND SCREEN INTAKE



V-BANK FILTER  
FILTER SIZE & QTY

20"x25"x2" (3)
16"x20"x2" (8)
16"x20"x2" (8)
20"x25"x2" (8)
16"x20"x2" (15)
20"x25"x2" (12)

MAX. ROOF OPENING 2' SMALLER THEN CURB OUTSIDE DIMENSION

20 IN HIGH EQUIPMENT CURB

ALL DIMENSIONS ARE NOMINAL AND GIVEN IN INCHES.

UNIT SIZE	UNIT DIMENSIONS											DISCHARGE OPENING											WATER INLET DRAIN OPENING UNIT INFORMATION														
	A	B	C	D	E	F	G	H	I	J	K	L	M	N	O	P	Q	R	S	T	U	V	W	X	Y	Z	Filter Size & Qty	Max. Filter Velocity									
1	138-7/8	27-3/8	29-3/4	26-1/16	3-3/4	2-3/8	8-1/4	84-11/16	24-3/4	81-15/16	13-1/4	11-1/2	3-7/8	1-3/4	4-1/2	38-1/2	13	48-1/4	16"x25"x2" (3)	②3500 CFM = 667 FPM	1	165.63	2	8-1/4	84-11/16	24-3/4	81-15/16	13-1/4	11-1/2	3-7/8	1-3/4	4-1/2	38-1/2	13	48-1/4	16"x25"x2" (3)	②3500 CFM = 667 FPM
2**	146-7/8	37-3/8	36-3/4	33-1/16	3-3/4	5-1/16	8-1/4	84-11/16	28-3/4	81-15/16	13-1/4	11-1/2	3-7/8	1-3/4	4-1/2	38-1/2	18	48-1/4	20"x25"x2" (3)	②5000 CFM = 580 FPM	2**	320.88	2	8-1/4	84-11/16	28-3/4	81-15/16	13-1/4	11-1/2	3-7/8	1-3/4	4-1/2	38-1/2	18	48-1/4	20"x25"x2" (3)	②5000 CFM = 580 FPM
3	146-7/8	41-3/8	36-3/4	33-1/16	3-3/4	5-1/16	9-1/2	84-11/16	28-3/4	81-15/16	13-1/4	11-1/2	3-7/8	1-3/4	4-1/2	38-1/2	18	48-1/4	20"x25"x2" (3)	②6000 CFM = 696 FPM	3	514.97	2	9-1/2	96-7/16	38	94-3/16	13-1/4	11-1/2	3-7/8	1-3/4	4-1/2	44	20	57-1/4	16"x20"x2" (6)	②8000 CFM = 762 FPM
4	189-1/4	48-7/16	51-3/8	46-1/8	5-1/4	47-1/4	10-1/4	97-1/16	45-1/2	94-1/16	14-1/4	12-1/2	4-1/2	1-1/8	4-1/2	41-1/8	23-1/2	52-7/8	16"x20"x2" (10)	②15000 CFM = 857 FPM	4	831.87	2-1/2	10	97-1/16	45-1/2	94-1/16	14-1/4	12-1/2	4-1/2	1-1/8	4-1/2	41-1/8	23-1/2	52-7/8	16"x20"x2" (10)	②15000 CFM = 857 FPM
5	199-1/4	59-3/16	58-3/8	53-1/8	5-1/4	49-1/2	10-1/4	96-11/16	52-1/4	93-13/16	14-1/4	13-3/8	4-1/2	1-1/8	4-1/2	41-1/8	28-7/8	52-7/8	20"x25"x2" (8)	②2000 CFM = 957 FPM	5	1230.16	3	10-1/4	96-11/16	52-1/4	93-13/16	14-1/4	13-3/8	4-1/2	1-1/8	4-1/2	41-1/8	28-7/8	52-7/8	20"x25"x2" (8)	②2000 CFM = 957 FPM

UNIT SIZE	STANDARD EVAPORATIVE COOLING UNIT W/											CELEDEK EVAPORATIVE COOLING UNIT W/															
	UNIT WEIGHT	TOT. WEIGHT	STEAM COIL	PIPE CONNECTION	UNIT WEIGHT	TOT. WEIGHT	STEAM COIL	PIPE CONNECTION	UNIT WEIGHT	TOT. WEIGHT	STEAM COIL	PIPE CONNECTION	UNIT WEIGHT	TOT. WEIGHT	STEAM COIL	PIPE CONNECTION	UNIT WEIGHT	TOT. WEIGHT	STEAM COIL	PIPE CONNECTION	UNIT WEIGHT	TOT. WEIGHT	STEAM COIL	PIPE CONNECTION			
1	615 LBS	20"x25"x2" (3)	406 FPM	6	3 GPH	3.9 GPH	1	615 LBS	20"x25"x2" (3)	406 FPM	6	3 GPH	3.9 GPH	1	615 LBS	20"x25"x2" (3)	406 FPM	6	3 GPH	3.9 GPH	1	615 LBS	20"x25"x2" (3)	406 FPM	6	3 GPH	3.9 GPH
2**	920 LBS	16"x20"x2" (8)	358 FPM	10	5 GPH	6.5 GPH	2**	920 LBS	16"x20"x2" (8)	358 FPM	10	5 GPH	6.5 GPH	2**	920 LBS	16"x20"x2" (8)	358 FPM	10	5 GPH	6.5 GPH	2**	920 LBS	16"x20"x2" (8)	358 FPM	10	5 GPH	6.5 GPH
3	1150 LBS	16"x20"x2" (8)	429 FPM	10	7 GPH	8.4 GPH	3	1150 LBS	16"x20"x2" (8)	429 FPM	10	7 GPH	8.4 GPH	3	1150 LBS	16"x20"x2" (8)	429 FPM	10	7 GPH	8.4 GPH	3	1150 LBS	16"x20"x2" (8)	429 FPM	10	7 GPH	8.4 GPH
4	1835 LBS	20"x25"x2" (15)	572 FPM	24	12 GPH	10.15 GPH	4	1835 LBS	20"x25"x2" (15)	572 FPM	24	12 GPH	10.15 GPH	4	1835 LBS	20"x25"x2" (15)	572 FPM	24	12 GPH	10.15 GPH	4	1835 LBS	20"x25"x2" (15)	572 FPM	24	12 GPH	10.15 GPH
5	2465 LBS	20"x25"x2" (12)	638 FPM	30	15 GPH	12.6 GPH	5	2465 LBS	20"x25"x2" (12)	638 FPM	30	15 GPH	12.6 GPH	5	2465 LBS	20"x25"x2" (12)	638 FPM	30	15 GPH	12.6 GPH	5	2465 LBS	20"x25"x2" (12)	638 FPM	30	15 GPH	12.6 GPH

\*\* DIMENSIONS APPLY TO UNITS WITH G12 BLOWERS ONLY

REV#1 12/17/2016