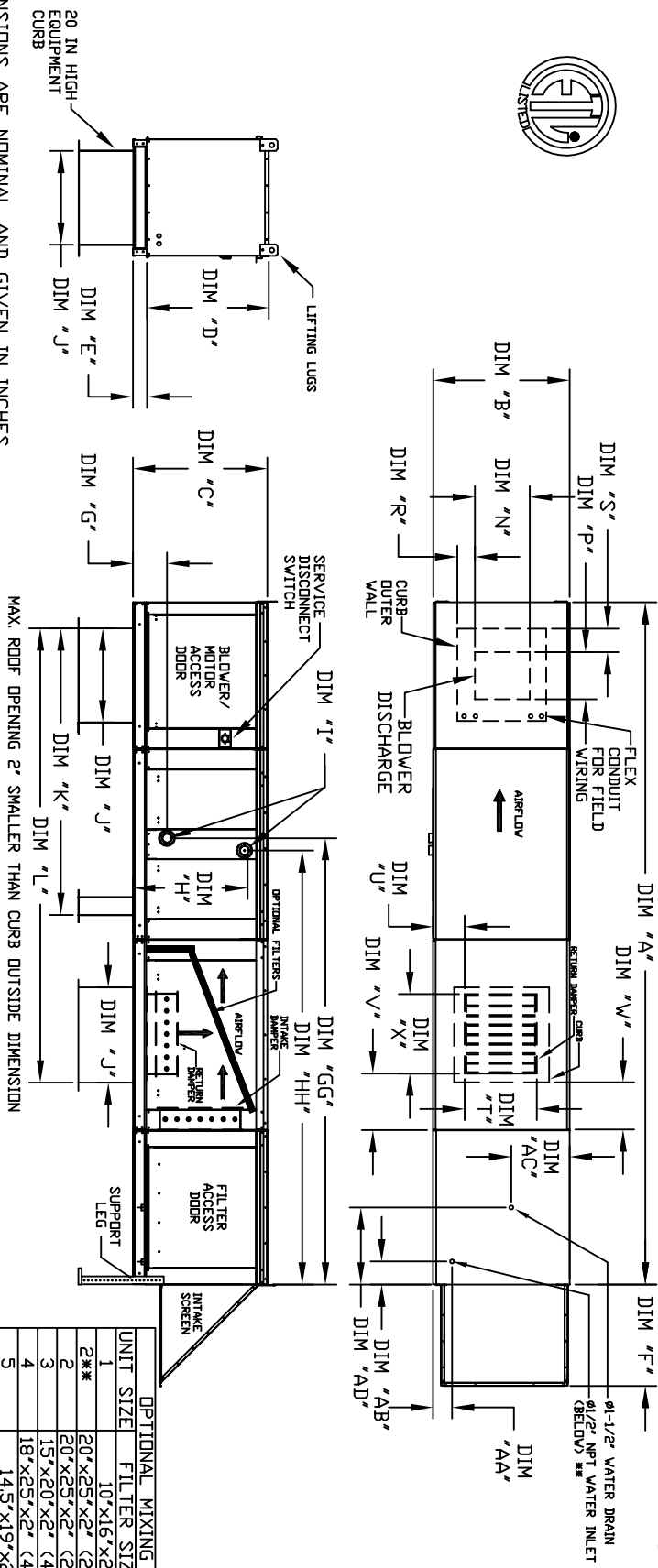


MODULAR OUTDOOR DOWN DISCHARGE BLOWER WITH EVAPORATIVE COOLER, HEATING COIL, MIXING BOX AND SCREEN INTAKE

SEE BROWNS
REV#1 12/1/2016



ALL DIMENSIONS ARE NOMINAL AND GIVEN IN INCHES.

UNIT SIZE	1	2**	3	4	5
OPTIONAL MIXING BOX FILTERS	10"x16"x2" (5)	20"x25"x2" (2), 16"x25"x2" (1)	20"x25"x2" (2), 16"x25"x2" (1)	15"x20"x2" (4), 15"x15"x2" (2)	18"x25"x2" (4), 16"x20"x2" (2)
FILTER SIZE & QTY	16"x20"x2" (3)	20"x25"x2" (3)	20"x25"x2" (3)	16"x20"x2" (6)	20"x25"x2" (10)
MAX. FILTER VELOCITY	667 FPM	580 FPM	696 FPM	762 FPM	857 FPM

UNIT SIZE	HOT WATER COIL MODULE													STEAM COIL MODULE												
	A	B	C	D	E	F	G	H	I	J	K	L	N	P	R	S	T	U	V	W	X	AA	AB	AC	AD	
1	158-7/8	27-3/8	29-3/4	26-1/16	3-3/4	22-3/8	21	65-13/16	98-5/8	13-1/4	11-1/2	3-7/8	1-3/4	14	8	14	12-1/2	18	4-1/2	6-1/4	13	16	16"x20"x2" (3)	@3500 CFM = 667 FPM		
2**	166-7/8	33-3/8	36-3/4	33-1/16	3-3/4	30-5/16	31	74-5/8	112-9/16	15-3/4	13-9/16	7-5/8	7-15/16	22-3/4	8	11	7-1/2	24	4-1/2	6-1/4	18	16	20"x25"x2" (3)	@5000 CFM = 580 FPM		
3	171-7/8	41-3/8	43-3/8	38-1/16	5-1/4	34-3/16	35	79-3/16	120-1/8	18-3/4	16	6-1/8	5-1/2	22-3/4	8	11	7-1/2	24	4-1/2	6-1/4	18	16	20"x25"x2" (3)	@6000 CFM = 696 FPM		
4	227-1/8	48-7/16	51-3/8	46-1/8	5-1/4	47-1/4	42	104-9/32	153-15/16	24-7/8	24-7/8	8-9/16	1-1/8	33	10	11	8	4-1/2	30	4-1/2	5-3/4	20	19	16"x20"x2" (6)	@8000 CFM = 762 FPM	
5	237-1/8	55-3/8	58-3/8	53-1/8	5-1/4	49-1/2	52-3/4	114-21/32	170-7/8	31-3/8	31-3/8	10-11/16	13-1/16	43	10	11	8	36	4-1/2	43	4-1/2	5-3/4	23-1/2	17-1/2	20"x25"x2" (10)	@15000 CFM = 857 FPM

UNIT SIZE	STANDARD EVAPORATIVE COOLING UNIT W/													CELDEK EVAPORATIVE COOLING UNIT W/												
	TOT. CAPACITY (GPH)	PIPE CONNECTION	UNIT WEIGHT (LBS)	TOT. WEIGHT MEDIA SIZE & QTY	VEL. @ MAX. CFM (FPM)	NOZZLES	MAX. FLOW RATE (GPH)	UNIT WEIGHT (LBS)	TOT. WEIGHT MEDIA SIZE & QTY	VEL. @ MAX. CFM (FPM)	NOZZLES	MAX. FLOW RATE (GPH)	UNIT WEIGHT (LBS)	TOT. WEIGHT MEDIA SIZE & QTY	VEL. @ MAX. CFM (FPM)	NOZZLES	MAX. FLOW RATE (GPH)									
1	1630.88	2	675	20"x25"x2" (3)	406	6	3 GPH	680	20"x24"x12" (3)	1050	12	3.9	995	25"x32"x12" (3)	900	20	6.5									
2**	320.88	2	1010	16"x20"x2" (8)	358	10	5 GPH	1005	16"x20"x2" (8)	1080	20	6.5	1250	25"x36"x12" (3)	1067	28	8.4									
3	320.88	2	1265	16"x20"x2" (8)	348	14	7 GPH	1250	16"x20"x2" (8)	1250	28	10.15	2020	30"x43"x12" (4)	1322	35	10.15									
4	831.87	2-1/2	2075	20"x25"x2" (15)	572	24	12 GPH	2045	20"x25"x2" (15)	2045	35	10.15	2700	38"x54"x12" (12)	1304	42	12.6									
5	1230.16	3	2745	20"x25"x2" (12)	638	30	15 GPH	2700	20"x25"x2" (12)	2700	42	12.6														

* DIMENSIONS APPLY TO UNITS WITH G12 BLOWERS ONLY
** MAY VARY WATER CONNECTION - EN DIST & 70 HFC