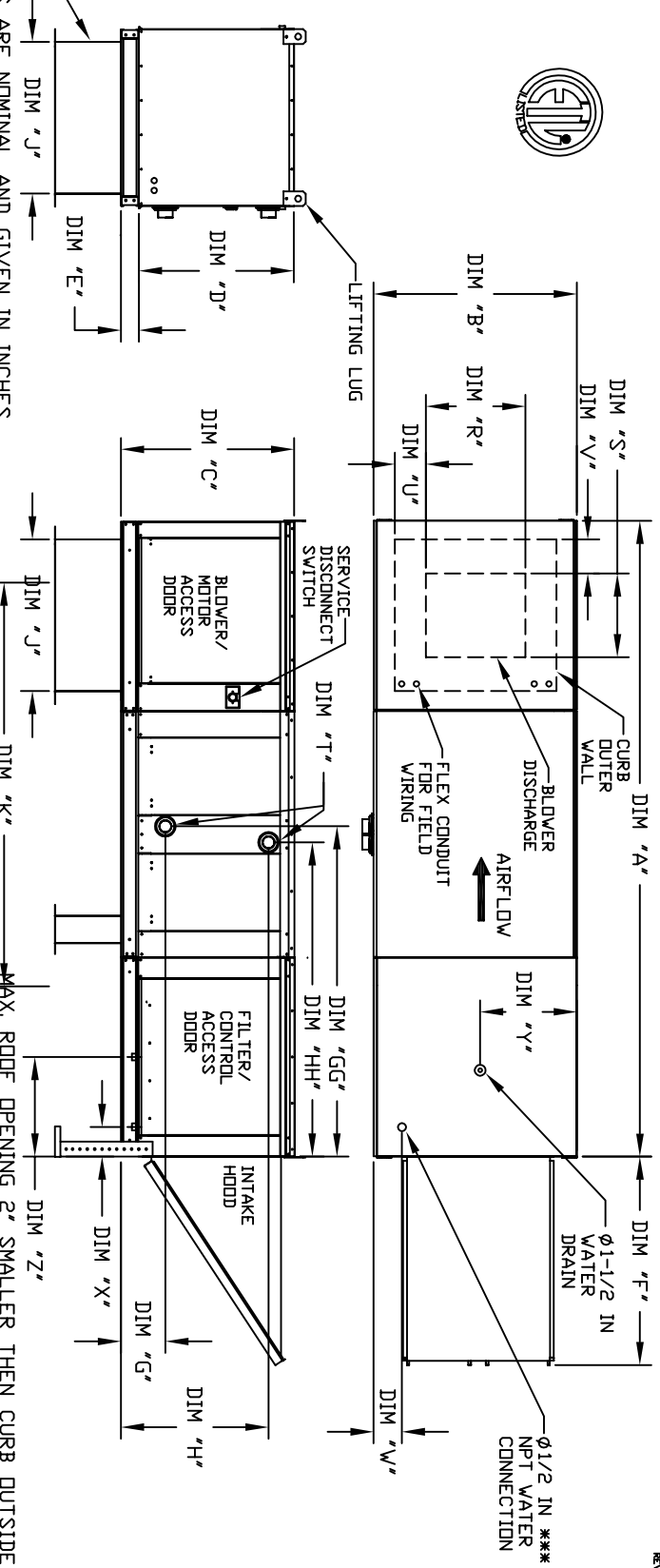


MODULAR OUTDOOR DOWN DISCHARGE BLOWER WITH HEATING COIL, EVAPORATIVE COOLER AND INTAKE HOOD

REV#5 12/1/2016



20 IN HIGH EQUIPMENT CURB
DIM 'J'

DISCHARGE OPENING
DIM 'K'

MAX. ROOF OPENING 2" SMALLER THEN CURB OUTSIDE DIMENSION

UNIT SIZE	HOT WATER MODULE											STEAM COIL MODULE																			
	A	B	C	D	E	F	J	K	R	S	U	V	W	X	Y	Z	(MBSH)	T' (MPT)	G	GG	H	HH	(MBSH)	T' (MPT)	G	GG	H	HH			
1	106-5/8	27-3/8	29-3/4	26-1/16	3-3/4	4-4/8	3-8	21	65-13/16	13-1/4	11-1/2	3-7/8	1-3/4	4-1/2	6-1/4	13	16	16	8-3/4	51-1/16	16-15/16	51-1/16	1	176.49	2-1/2	2-1/2	5	8-3/4	51-1/16	16-15/16	51-1/16
2**	114-5/8	37-3/8	36-3/4	33-1/16	3-3/4	5-3/8	5/8	31	74-5/8	15-3/4	13-9/16	7-5/8	1-15/16	4-1/2	6-1/4	18	16	20"x25"x2" (3)	8-3/4	51-1/16	18-3/8	51-1/16	2**	328.19	2-1/2	2-1/2	5	8-3/4	51-1/16	18-3/8	51-1/16
2	114-5/8	37-3/8	36-3/4	33-1/16	3-3/4	5-3/8	5/8	31	74-5/8	15-3/4	13-9/16	7-5/8	1-15/16	4-1/2	6-1/4	18	16	20"x25"x2" (3)	8-3/4	51-1/16	18-3/8	51-1/16	2	328.19	2-1/2	2-1/2	5	8-3/4	51-1/16	18-3/8	51-1/16
3	125-5/8	41-3/8	43-3/8	38-1/16	5-1/4	5-5/8	5/8	35	79-3/16	18-3/4	16	6-1/2	5-1/2	4-1/2	5-3/4	20	19	16"x20"x2" (6)	10-1/4	57-1/16	23-5/8	57-1/16	3	505.64	2-1/2	2-1/2	5	10-1/4	57-1/16	23-5/8	57-1/16
4	153-7/8	48-7/16	51-3/8	46-1/8	5-1/4	7-3/8	3/8	42	104-9/32	24-7/8	8-9/16	1-1/8	4-1/2	5-3/4	23-1/2	17-1/2	19	10-1/4	60-7/32	28-5/8	60-7/32	4	831.87	2-1/2	2-1/2	5	10-1/4	60-7/32	28-5/8	60-7/32	
5	163-7/8	58-3/16	58-3/8	53-1/8	5-1/4	7-1/8	3/8	52	114-21/32	31-3/8	10-11/16	1-3/16	4-1/2	5-3/4	28-7/8	17-1/2	20	10-1/4	60-7/32	31-3/4	60-7/32	5	1234.45	2-1/2	2-1/2	5	10-1/4	60-7/32	31-3/4	60-7/32	

UNIT SIZE	HOT WATER MODULE											STEAM COIL MODULE																			
	A	B	C	D	E	F	J	K	R	S	U	V	W	X	Y	Z	(MBSH)	T' (MPT)	G	GG	H	HH	(MBSH)	T' (MPT)	G	GG	H	HH			
1	165.63		2	8-1/4	52-7/16	24-3/4	49-11/16																1	176.49	2-1/2	2-1/2	5	8-3/4	51-1/16	16-15/16	51-1/16
2**	320.88		2	8-1/4	52-7/16	28-3/4	49-11/16																2**	328.19	2-1/2	2-1/2	5	8-3/4	51-1/16	18-3/8	51-1/16
2	320.88		2	8-1/4	52-7/16	28-3/4	49-11/16																2	328.19	2-1/2	2-1/2	5	8-3/4	51-1/16	18-3/8	51-1/16
3	514.97		2	9-1/2	58-3/16	38	55-15/16																3	505.64	2-1/2	2-1/2	5	10-1/4	57-1/16	23-5/8	57-1/16
4	831.87		10	61-11/16	45-1/2	58-11/16																	4	812.24	2-1/2	2-1/2	5	10-1/4	60-7/32	28-5/8	60-7/32
5	1230.16		3	10-1/4	61-5/16	58-7/16																	5	1234.45	2-1/2	2-1/2	5	10-1/4	60-7/32	31-3/4	60-7/32

UNIT SIZE	STANDARD EVAPORATIVE COOLING UNIT W/											CELDEK EVAPORATIVE COOLING UNIT W/													
	(MBSH)	TOT. WEIGHT	STEAM	COIL	MODUL	UNIT WEIGHT	TOT. WEIGHT	STEAM	COIL	MODUL	UNIT WEIGHT	TOT. WEIGHT	STEAM	COIL	MODUL	UNIT WEIGHT	TOT. WEIGHT	STEAM	COIL	MODUL	UNIT WEIGHT	TOT. WEIGHT	STEAM	COIL	MODUL
1	540 LBS	540 LBS	815 LBS	825 LBS	1025 LBS	540 LBS	545 LBS	810 LBS	820 LBS	1015 LBS	545 LBS	545 LBS	810 LBS	820 LBS	1015 LBS	545 LBS	545 LBS	810 LBS	820 LBS	1015 LBS	545 LBS	545 LBS	810 LBS	820 LBS	1015 LBS
2**	815 LBS	815 LBS	1642	1642	2042	815 LBS	810 LBS	1642	1642	2042	815 LBS	810 LBS	1642	1642	2042	815 LBS	810 LBS	1642	1642	2042	815 LBS	810 LBS	1642	1642	2042
2	825 LBS	825 LBS	1642	1642	2042	825 LBS	820 LBS	1642	1642	2042	825 LBS	820 LBS	1642	1642	2042	825 LBS	820 LBS	1642	1642	2042	825 LBS	820 LBS	1642	1642	2042
3	1025 LBS	1025 LBS	1642	1642	2042	1025 LBS	1015 LBS	1642	1642	2042	1025 LBS	1015 LBS	1642	1642	2042	1025 LBS	1015 LBS	1642	1642	2042	1025 LBS	1015 LBS	1642	1642	2042
4	1710 LBS	1710 LBS	1642	1642	2042	1685 LBS	1680 LBS	1642	1642	2042	1685 LBS	1680 LBS	1642	1642	2042	1685 LBS	1680 LBS	1642	1642	2042	1685 LBS	1680 LBS	1642	1642	2042
5	2260 LBS	2260 LBS	1642	1642	2042	2255 LBS	2220 LBS	1642	1642	2042	2255 LBS	2220 LBS	1642	1642	2042	2255 LBS	2220 LBS	1642	1642	2042	2255 LBS	2220 LBS	1642	1642	2042

MAX. ROOF OPENING 2" SMALLER THEN CURB OUTSIDE DIMENSION