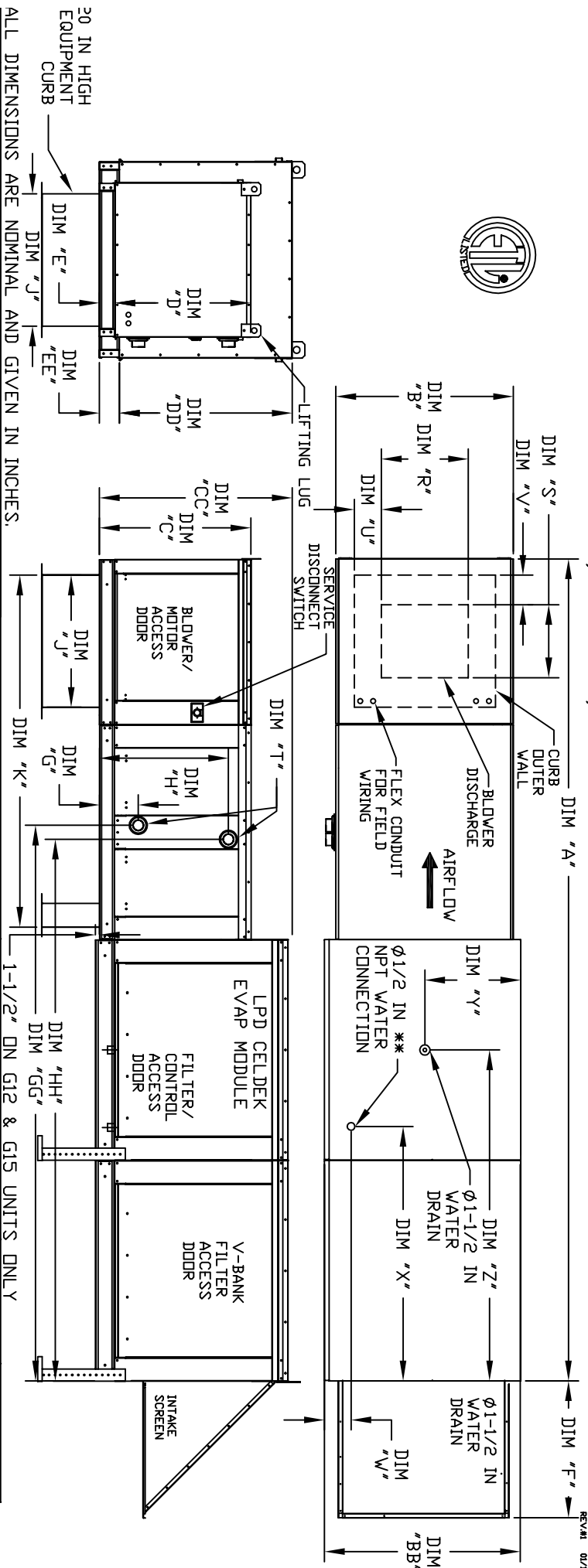


MODULAR OUTDOOR DOWN DISCHARGE BLOWER WITH V-BANK, HEATING COIL, LPD EVAPORATIVE COOLER AND SCREEN INTAKE

STAIRS
REV 11/01/20



20 IN HIGH EQUIPMENT CURB

ALL DIMENSIONS ARE NOMINAL AND GIVEN IN INCHES.

MODEL	A	B	BB	C	CC	D	DD	E	EE	F	J	K	R	S	U	V	W	X	Y	Z
G10	138-7/8	27-3/8	36-3/4	29-3/4	36-3/4	26-1/16	33	3-3/4	3-3/4	3-3/4	3-3/4	21	13-1/4	11-1/2	3-7/8	1-3/4	4-1/2	38-1/2	18	48-1/4
G12	158-7/8	37-3/8	40-3/4	36-3/4	43-3/8	33-1/16	38-1/8	3-3/4	5-1/4	3-3/4	31	79	15-3/4	13-9/16	7-5/8	7-15/16	4-1/2	44	20	57-1/4
G15	158-7/8	37-3/8	40-3/4	36-3/4	43-3/8	33-1/16	38-1/8	3-3/4	5-1/4	3-3/4	31	79	15-3/4	13-9/16	7-5/8	7-15/16	4-1/2	44	20	57-1/4
G18	158-1/8	41-3/8	47-7/8	43-3/8	51-3/8	38-1/16	46-1/8	5-1/4	5-1/4	4-1/4	35	84	18-3/4	16	6-1/8	5-1/2	4-1/2	44	20	57-1/4
920	189-1/4	48-7/16	58-5/8	51-3/8	58-3/8	46-1/8	53-1/8	5-1/4	5-1/4	4-1/4	42	115-3/16	24-7/8	24-7/8	8-9/16	1-1/8	4-1/2	41-1/8	23-1/2	52-7/8
925	199-1/4	59-3/16	74-7/8	58-3/8	58-3/8	53-1/8	53-1/8	5-1/4	5-1/4	4-1/4	42	115-3/16	24-7/8	24-7/8	8-9/16	1-1/8	4-1/2	41-1/8	23-1/2	52-7/8

HOT WATER COIL MODULE

STEAM COIL MODULE

MODEL	TOTAL CAPACITY (MBH)	PIPE CONNECTION 'T' (MPT)	G	GG	H	HH	MODEL	TOTAL CAPACITY (MBH)	PIPE CONNECTION 'T' (MPT)	PSI	G	GG	H	HH
G10	165.63	2	8-1/4	86-15/16	24-3/4	84-3/16	G10	176.49	2-1/2	5	8-3/4	85-9/16	16-15/16	85-9/16
G12	320.88	2	8-1/4	98-15/16	28-3/4	96-3/16	G12	328.19	2-1/2	5	8-3/4	97-9/16	18-3/8	97-9/16
G15	320.88	2	8-1/4	98-15/16	28-3/4	96-3/16	G15	328.19	2-1/2	5	8-3/4	97-9/16	18-3/8	97-9/16
G18	514.97	1-1/2	9-1/2	92-15/16	38	90-5/16	G18	505.64	2-1/2	5	10-1/4	91-13/16	23-5/8	91-13/16
920	831.87	2-1/2	10	99-5/16	45-1/2	96-5/16	920	812.24	2-1/2	5	10-1/4	97-7/8	28-5/8	97-7/8
925	1230.16	3	10-1/4	99-9/16	52-1/4	96-1/16	925	1234.45	2-1/2	5	10-1/4	97-7/8	31-3/4	97-7/8

MODEL	HOT WATER	STEAM	TOT. WEIGHT	MAX. FLOW RATE	MODEL	STEAM	TOT. WEIGHT	MAX. FLOW RATE
G10	740 LBS	740 LBS	25'x32'x12'	20	G10	740 LBS	25'x32'x12'	20
G12	1055 LBS	1055 LBS	30'x36'x12'	28	G12	1055 LBS	30'x36'x12'	28
G15	1065 LBS	1065 LBS	30'x36'x12'	28	G15	1065 LBS	30'x36'x12'	28
G18	1440 LBS	1435 LBS	38'x43'x12'	35	G18	1435 LBS	38'x43'x12'	35
920	2055 LBS	2030 LBS	45'x54'x12'	42	920	2030 LBS	45'x54'x12'	42
925	2650 LBS	2645 LBS	45'x72'x12'	57	925	2645 LBS	45'x72'x12'	57

MAX. ROOF OPENING 2" SMALLER THEN CURB OUTSIDE DIMENSION

MAX. ROOF OPENING 2" SMALLER THEN CURB OUTSIDE DIMENSION