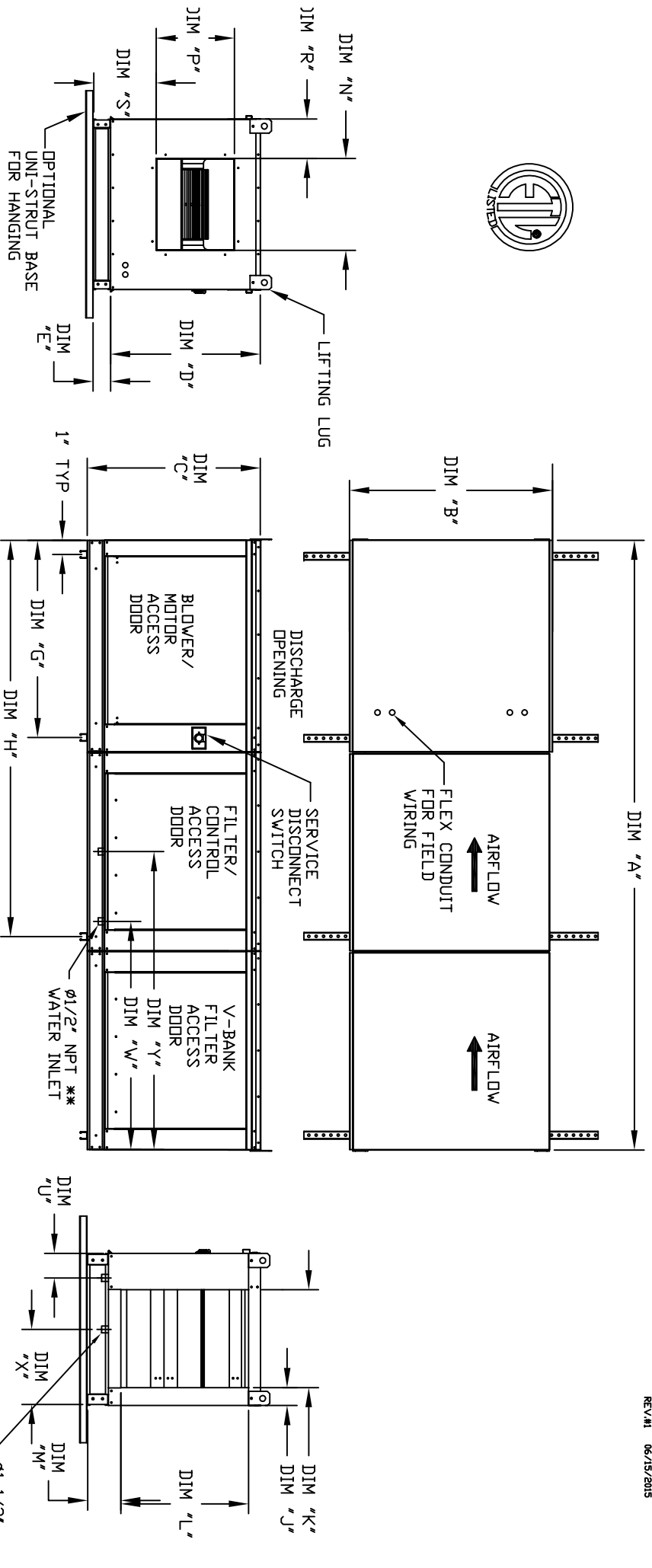


MODULAR INDOOR SIDE DISCHARGE BLOWER WITH V-BANK AND EVAPORATIVE COOLER INTAKE

REV #1 06/15/2015



ALL DIMENSIONS ARE NOMINAL AND GIVEN IN INCHES.

MODEL	UNIT DIMENSIONS													INTAKE OPENING													DISCHARGE OPENING													WATER INLET					DRAIN OPENING				
	A	B	C	D	E	F	G	H	J	K	L	M	N	P	R	S	U	W	X	Y	J	K	L	M	N	P	R	S	U	W	X	Y	U	V	W	X	Y												
G10	96-5/8	27-3/8	29-3/4	26-1/16	3-3/4	36	31-1/8	63-1/4	3-1/8	16-3/4	21-7/8	5-3/4	13-1/4	11-1/2	6-3/8	11-7/8	4-1/2	38-1/2	13	48-1/4	3-1/8	16-3/4	21-7/8	5-3/4	13-1/4	11-1/2	6-3/8	11-7/8	4-1/2	38-1/2	13	48-1/4	4-1/2	38-1/2	13	48-1/4	13												
G12	104-5/8	37-3/8	36-3/4	33-1/16	3-3/4	48	39-1/8	71-1/4	5-1/8	24-3/4	28-7/8	5-3/4	15-3/4	13-9/16	10-1/8	13-1/16	4-1/2	38-1/2	18	48-1/4	5-1/8	24-3/4	28-7/8	5-3/4	15-3/4	13-9/16	10-1/8	13-1/16	4-1/2	38-1/2	18	48-1/4	4-1/2	38-1/2	18	48-1/4	18												
G15	104-5/8	37-3/8	36-3/4	33-1/16	3-3/4	48	39-1/8	71-1/4	5-1/8	24-3/4	28-7/8	5-3/4	15-3/4	13-9/16	10-1/8	13-1/16	4-1/2	38-1/2	20	48-1/4	5-1/8	24-3/4	28-7/8	5-3/4	15-3/4	13-9/16	10-1/8	13-1/16	4-1/2	38-1/2	20	48-1/4	4-1/2	38-1/2	20	48-1/4	18												
G18	121-5/8	41-3/8	43-3/8	38-1/16	5-1/4	60	44-1/8	82-1/4	4-5/8	29-1/4	33-7/8	7-1/2	22	19	9	17-7/8	4-1/2	44	20	57-1/4	4-5/8	29-1/4	33-7/8	7-1/2	22	19	9	17-7/8	4-1/2	44	20	57-1/4	4-1/2	44	20	57-1/4	20												
920	134-15/16	48-7/16	51-3/8	46-1/8	5-1/4	60	63-3/16	98-7/16	4-5/8	36-1/4	41-7/8	7-1/2	24-7/8	24-7/8	11-1/16	19-1/8	4-1/2	41-1/8	23-1/2	52-7/8	4-5/8	36-1/4	41-7/8	7-1/2	24-7/8	24-7/8	11-1/16	19-1/8	4-1/2	41-1/8	23-1/2	52-7/8	4-1/2	41-1/8	23-1/2	52-7/8	20												
925	144-15/16	59-3/16	58-3/8	53-1/8	5-1/4	72	73-3/16	108-7/16	4-5/8	47	48-7/8	7-1/2	31-3/8	31-3/8	13-3/16	21-9/16	4-1/2	41-1/8	28-7/8	52-7/8	4-5/8	47	48-7/8	7-1/2	31-3/8	31-3/8	13-3/16	21-9/16	4-1/2	41-1/8	28-7/8	52-7/8	4-1/2	41-1/8	28-7/8	52-7/8	20												

UNIT INFORMATION

MODEL	STANDARD EVAPORATIVE COOLING UNIT						CELDEK EVAPORATIVE COOLING UNIT						V-BANK FILTER					
	TOT. WEIGHT	MEDIA SIZE & QTY	VEL.	MAX. CFM	NOZZLES	MAX. FLOW RATE	TOT. WEIGHT	MEDIA SIZE & QTY	VEL.	MAX. CFM	NOZZLES	MAX. FLOW RATE	FILTER SIZE & QTY					
G10	430 LBS	20"x25"x2" (3)	406 FPM	6	3 GPH	435 LBS	20"x24"x12"	1050 FPM	12	3.9 GPH	20"x25"x2" (3)							
G12	665 LBS	16"x20"x2" (8)	358 FPM	10	5 GPH	660 LBS	25"x32"x12"	900 FPM	20	6.5 GPH	16"x20"x2" (8)							
G15	675 LBS	16"x20"x2" (8)	429 FPM	10	5 GPH	670 LBS	25"x32"x12"	1080 FPM	20	6.5 GPH	16"x20"x2" (8)							
G18	840 LBS	20"x25"x2" (8)	348 FPM	14	7 GPH	830 LBS	30"x36"x12"	1067 FPM	28	8.4 GPH	20"x25"x2" (8)							
920	1300 LBS	16"x20"x2" (15)	572 FPM	24	12 GPH	1270 LBS	38"x43"x12"	1322 FPM	35	10.15 GPH	16"x20"x2" (15)							
925	1805 LBS	20"x25"x2" (12)	638 FPM	30	15 GPH	1765 LBS	45"x54"x12"	1304 FPM	42	12.6 GPH	20"x25"x2" (12)							

REV #1 MAY 15/2015 VATED DESCRIBED - 50 DPT @ 70 MFC -