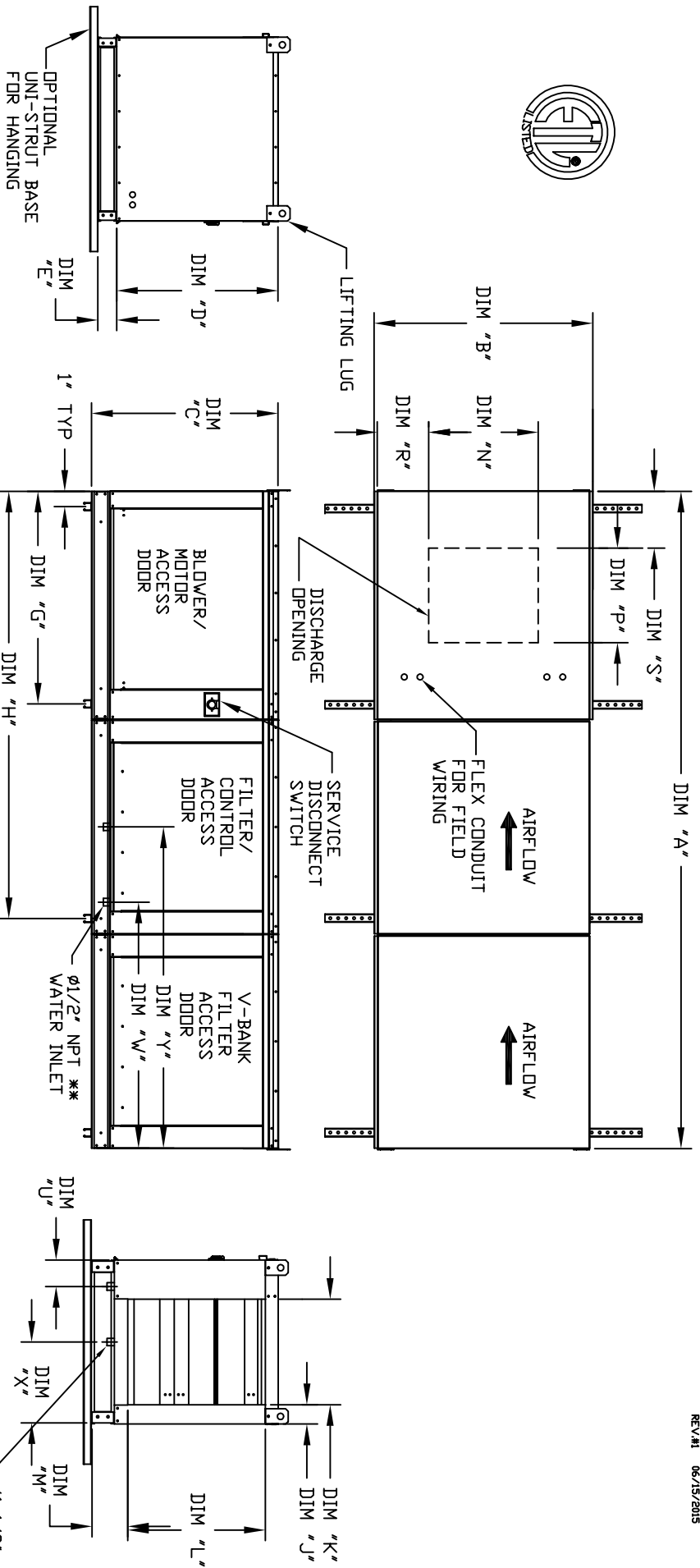


MODULAR INDOOR DOWN DISCHARGE BLOWER WITH V-BANK AND EVAPORATIVE COOLER INTAKE

REV #1 06/15/2015



ALL DIMENSIONS ARE NOMINAL AND GIVEN IN INCHES.

MODEL	UNIT DIMENSIONS													INTAKE OPENING					DISCHARGE OPENING					WATER INLET DRAIN OPENING				
	A	B	C	D	E	F	G	H	J	K	L	M	N	P	R	S	U	W	X	Y								
G10	96-5/8	27-3/8	29-3/4	26-1/16	3-3/4	36	31-1/8	63-1/4	3-1/8	16-3/4	21-7/8	5-3/4	13 1/4	11-1/2	6-3/8	7-1/4	4-1/2	38-1/2	13	48-1/4								
G12	104-5/8	37-3/8	36-3/4	33-1/16	3-3/4	48	39-1/8	71-1/4	5-1/8	24-3/4	28-7/8	5-3/4	15-3/4	13-9/16	10-1/8	12-1/2	4-1/2	38-1/2	18	48-1/4								
G15	104-5/8	37-3/8	36-3/4	33-1/16	3-3/4	48	39-1/8	71-1/4	5-1/8	24-3/4	28-7/8	5-3/4	15-3/4	13-9/16	10-1/8	12-1/2	4-1/2	38-1/2	18	48-1/4								
G18	121-5/8	41-3/8	43-3/8	38-1/16	5-1/4	60	44-1/8	82-1/4	4-5/8	29-1/4	33-7/8	7-1/2	22	19	9	12	4-1/2	44	20	57-1/4								
920	134-15/16	48-7/16	51-3/8	46-1/8	5-1/4	60	63-3/16	98-7/16	4-5/8	36-1/4	41-7/8	7-1/2	24-7/8	24-7/8	11-1/16	12-1/4	4-1/2	41-1/8	23-1/2	52-7/8								
925	144-15/16	59-3/16	58-3/8	53-1/8	5-1/4	72	73-3/16	108-7/16	4-5/8	47	48-7/8	7-1/2	31-3/8	31-3/8	13-3/16	14-1/2	4-1/2	41-1/8	28-7/8	52-7/8								

UNIT INFORMATION

STANDARD EVAPORATIVE COOLING UNIT

MODEL	TOT. WEIGHT	MEDIA SIZE & QTY	VEL. @ MAX. CFM/NOZZLES	MAX. FLOW RATE
G10	430 LBS	20"x25"x2" (3)	406 FPM	6 GPH
G12	665 LBS	16"x20"x2" (8)	358 FPM	10 GPH
G15	675 LBS	16"x20"x2" (8)	429 FPM	5 GPH
G18	840 LBS	20"x25"x2" (8)	348 FPM	14 GPH
920	1300 LBS	16"x20"x2" (15)	572 FPM	24 GPH
925	1805 LBS	20"x25"x2" (12)	638 FPM	30 GPH

CELDEK EVAPORATIVE COOLING UNIT

MODEL	TOT. WEIGHT	MEDIA SIZE & QTY	VEL. @ MAX. CFM/NOZZLES	MAX. FLOW RATE
G10	435 LBS	20"x24"x12"	1050 FPM	12 GPH
G12	660 LBS	25"x32"x12"	900 FPM	20 GPH
G15	670 LBS	25"x32"x12"	1080 FPM	20 GPH
G18	830 LBS	30"x36"x12"	1067 FPM	28 GPH
920	1270 LBS	38"x43"x12"	1322 FPM	35 GPH
925	1765 LBS	45"x54"x12"	1304 FPM	42 GPH

V-BANK FILTER

MODEL	TOT. WEIGHT	MEDIA SIZE & QTY
G10	430 LBS	20"x25"x2" (3)
G12	665 LBS	16"x20"x2" (8)
G15	675 LBS	16"x20"x2" (8)
G18	840 LBS	20"x25"x2" (8)
920	1300 LBS	16"x20"x2" (15)
925	1805 LBS	20"x25"x2" (12)