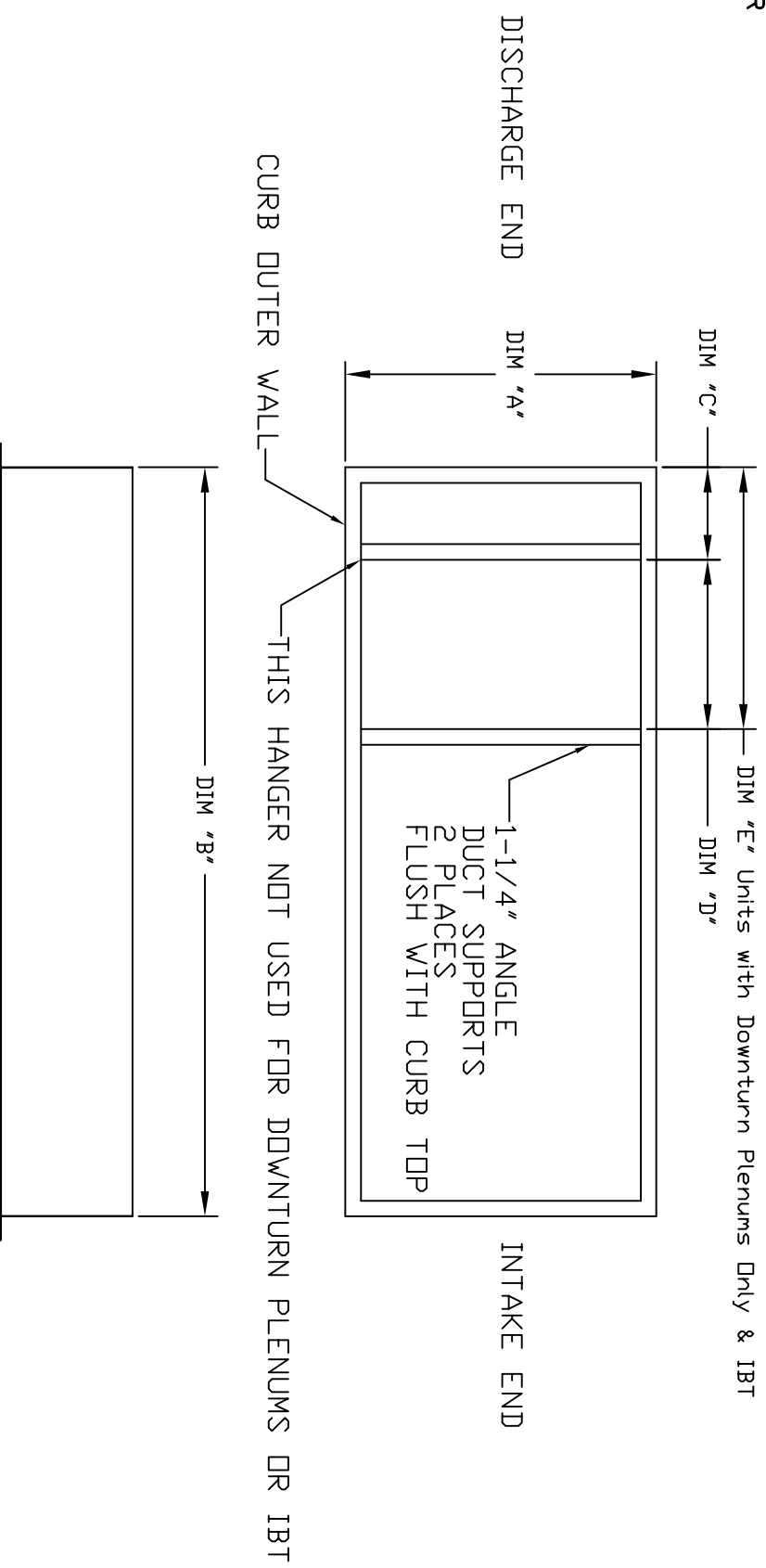


**DUCT HANGER**



Notes:  
Curbs for use with Downturn Plenums only require one hanger.  
All dimensions are nominal and given in inches.

**HEATER CURBS (Direct Fired/Electric)**

MODEL	WEIGHT	A	B	C	D
D76	50 LBS	19-1/2	52	4-1/4	9-1/8
DF/EH1	71 LBS	21	71	4-3/16	14-1/4
DF/EH2	93 LBS	31	79	8-11/16	20-1/4
DF/EH3	109 LBS	35	84	7-11/16	24-1/4
DF/EH4	91 LBS	42	42	9-15/16	26-1/4
DF/EH5	110 LBS	52-3/4	52-3/4	12-7/16	32-1/4

**SUPPLY FAN CURBS (Untempered)**

MODEL	WEIGHT	A	B	C	D
S10	28 LBS	23	23	4-3/8	14-1/4
S12	45 LBS	32-1/2	32-1/2	8-1/8	16-1/4
S15	45 LBS	32-1/2	32-1/2	6-1/8	20-1/4
MDD10	38 LBS	21	21	3-3/8	14-1/4
MDD12	61 LBS	31	31	7-3/8	16-1/4
MDD15	61 LBS	31	31	5-3/8	20-1/4
MDD18	77 LBS	35	35	5-3/8	24-1/4
MDD20	91 LBS	42	42	7-7/8	26-1/4
MMP25	110 LBS	52-3/4	52-3/4	10-1/4	32-1/4

**UNITS WITH DOWNTURN PLENUMS (One Hanger Only)**

Blower	WEIGHT	A	B	E
10	38/71 LBS	21	21/71	13-1/2
12	61/93 LBS	31	31/79	20
15	61/93 LBS	31	31/70	20
18	77/109 LBS	35	35/84	20
20	91 LBS	42	42	26
25	110 LBS	52-3/4	52-3/4	26

**IBT CURBS (Indirect Bent Tube)**

MODEL	WEIGHT	A	B	E
IBT-1	71 LBS	21	71	25
IBT-2	93 LBS	31	79	25
IBT-3	109 LBS	35	84	30
IBT-4	91 LBS	42	42	30
IBT-5	110 LBS	52-3/4	52-3/4	30

**MIXING BDX CURBS**

MODEL	WEIGHT	A	B	C	D
MB-1	38 LBS	21	21	9-1/4	18-1/2
MB-2	61 LBS	31	31	6-1/4	24-1/2
MB-3	77 LBS	35	35	3	30-1/2
MB-4	91 LBS	42	42	6-3/4	36-1/2
MB-5	110 LBS	52-3/4	52-3/4	2-1/4	43-1/2