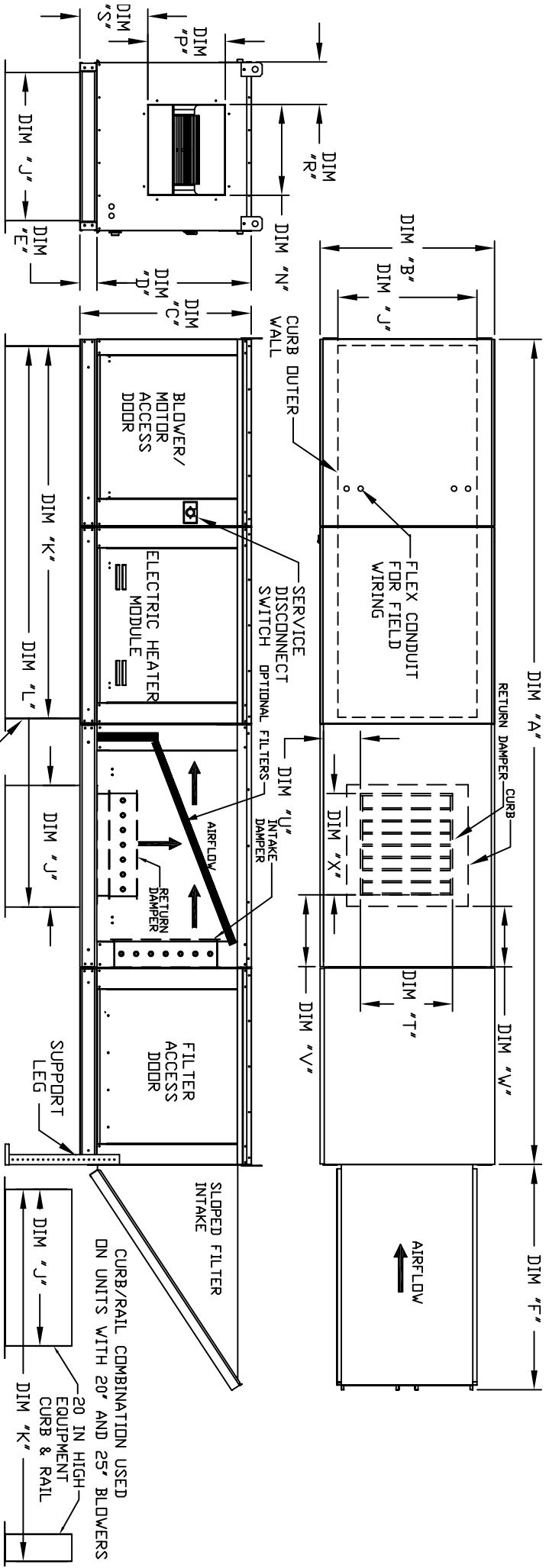


MODULAR OUTDOOR SIDE DISCHARGE ELECTRIC HEATER WITH MIXING BOX, V-BANK AND INTAKE HOOD

JHV/MS/SAH
REV. 00 11/29/2011



MAX. ROOF OPENING 2" SMALLER THAN CURB OUTSIDE DIMENSION

20 IN HIGH EQUIPMENT CURB

20 IN HIGH EQUIPMENT CURB & RAIL

ALL DIMENSIONS ARE NOMINAL AND GIVEN IN INCHES.

MODEL	WEIGHT	UNIT DIMENSIONS										DISCHARGE OPENING										RETURN DAMPER OPENING															
		A	B	C	D	E	F	J	K	L	N	P	R	S	T	U	V	W	X	A	B	C	D	E	F	J	K	L	N	P	R	S	T	U	V	W	X
E1-G10	800 LBS	138-7/8	27-3/8	29-3/4	26-1/16	3-3/4	44-3/8	21	71	102-7/16	13-1/4	11-1/2	6-3/8	11-7/8	14	8	14	12-1/2	18	138-7/8	27-3/8	29-3/4	26-1/16	3-3/4	44-3/8	21	71	102-7/16	13-1/4	11-1/2	6-3/8	11-7/8	14	8	14	12-1/2	18
E2-G15	1155 LBS	146-7/8	37-3/8	36-3/4	33-1/16	3-3/4	53-5/8	31	79	115-7/16	18-3/4	16	8-5/8	14-1/16	22-3/4	8	11	7-1/2	24	146-7/8	37-3/8	36-3/4	33-1/16	3-3/4	53-5/8	31	79	115-7/16	18-3/4	16	8-5/8	14-1/16	22-3/4	8	11	7-1/2	24
E3-G18	1420 LBS	163-7/8	41-3/8	43-3/8	38-1/16	5-1/4	51-5/8	35	84	123-7/16	22	19	9	17-7/8	28	8	7	4-1/2	30	163-7/8	41-3/8	43-3/8	38-1/16	5-1/4	51-5/8	35	84	123-7/16	22	19	9	17-7/8	28	8	7	4-1/2	30
E4-920	2365 LBS	189-1/4	48-7/16	51-3/8	46-1/8	5-1/4	76-3/8	42	115-3/16	163-3/16	24-7/8	24-7/8	11-1/16	19-1/8	33	10	11	8	36	189-1/4	48-7/16	51-3/8	46-1/8	5-1/4	76-3/8	42	115-3/16	163-3/16	24-7/8	24-7/8	11-1/16	19-1/8	33	10	11	8	36
E5-925	3040 LBS	199-1/4	59-3/16	58-3/8	53-1/8	5-1/4	71-3/8	52-3/4	125-3/16	179-15/16	31-3/8	31-3/8	13-3/16	21-9/16	43	10	6-1/2	1-1/4	43	199-1/4	59-3/16	58-3/8	53-1/8	5-1/4	71-3/8	52-3/4	125-3/16	179-15/16	31-3/8	31-3/8	13-3/16	21-9/16	43	10	6-1/2	1-1/4	43

UNIT INFORMATION

FILTERS		
MODEL	FILTER SIZE & QTY	MAX. FILTER VELOCITY
E1-G10	20"x25"x2" (3)	3600 CFM = 418 FPM
E2-G15	16"x20"x2" (8)	6500 CFM = 464 FPM
E3-G18	20"x25"x2" (8)	8000 CFM = 348 FPM
E4-920	16"x20"x2" (15)	21300 CFM = 495 FPM
E5-925	20"x25"x2" (12)	22200 CFM = 638 FPM

OPTIONAL MIXING BOX FILTERS		
MODEL	FILTER SIZE & QTY	
E1-G10	10"x16"x2" (5)	
E2-G15	20"x25"x2" (2), 16"x25"x2" (1)	
E3-G18	15"x20"x2" (4), 15"x15"x2" (2)	
E4-920	18"x25"x2" (4), 16"x20"x2" (2)	
E5-925	14.5"x19"x2" (12)	