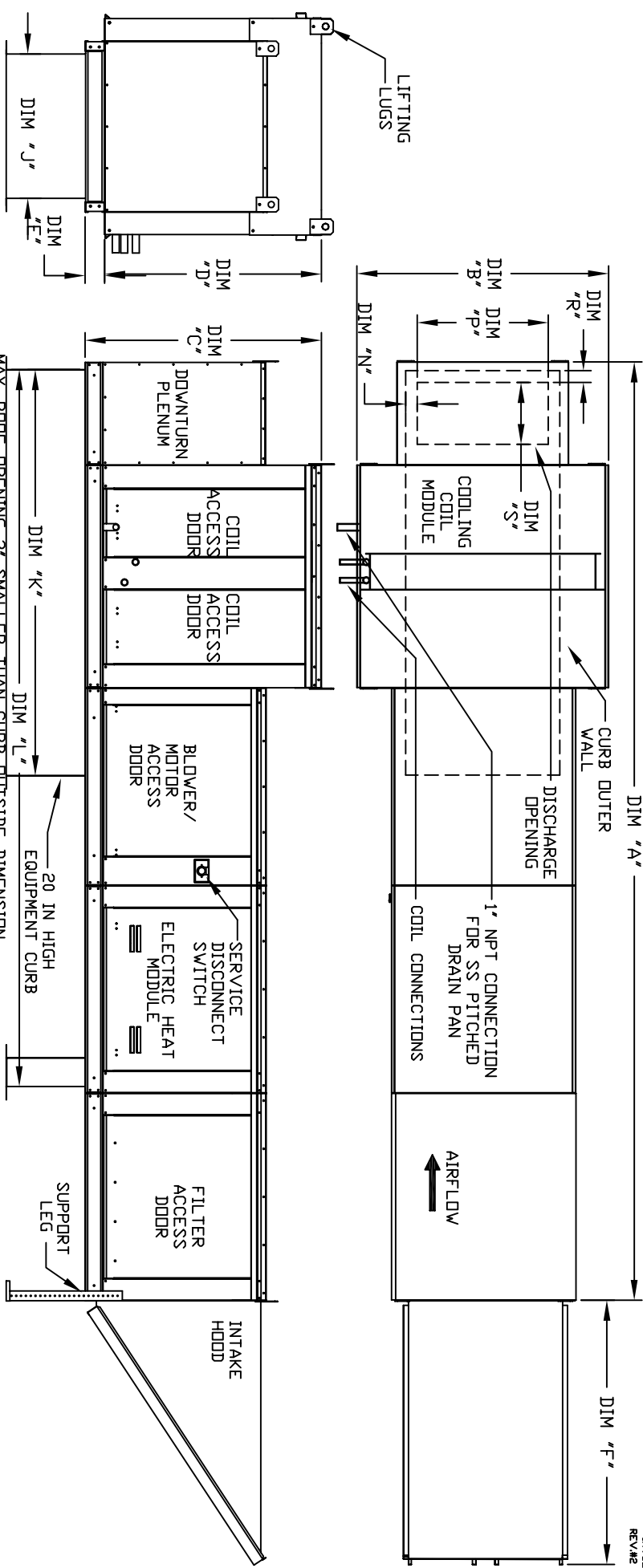


MODULAR OUTDOOR DOWN DISCHARGE ELECTRIC HEATER WITH COOLING COIL, V-BANK AND INTAKE HOOD



JHV/BEHSACDIP
REV#2 6/1/2009

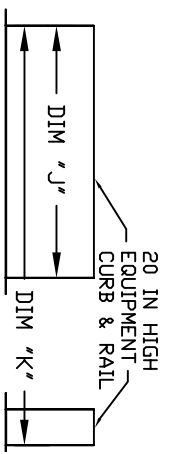
ALL DIMENSIONS ARE NOMINAL AND GIVEN IN INCHES.

MAX. ROOF OPENING 2" SMALLER THAN CURB OUTSIDE DIMENSION

MODEL	WEIGHT	A	B	C	D	E	F	J	K	L	N	P	R	S
MODEL	WEIGHT	UNIT DIMENSIONS												
E1-G10	1080 LBS	167-1/4	39-3/8	42-3/4	39	3-3/4	44-3/8	21	71	131-5/8	6-1/8	13-7/8	3-1/4	11-1/2
E2-G15	1485 LBS	181-1/4	49-3/8	47-3/4	44	3-3/4	53-5/8	31	79	145-5/8	6-7/8	22-3/8	3	18
E3-G18	1785 LBS	192-1/4	54-3/8	56-3/8	51-1/8	5-1/4	51-5/8	35	84	150-5/8	8-7/8	22-3/8	3	18
E4-920	2860 LBS	238-9/16	60-7/16	64-3/8	59-1/8	5-1/4	76-3/8	42	115-3/16	199-7/8	7-7/8	31-1/2	3-1/4	23-1/2
E5-925	3600 LBS	248-9/16	79-7/16	68-7/16	63-3/4	5-1/4	71-3/8	42	125-3/4	209-7/8	13-1/4	31-1/2	3-1/4	23-1/2

UNIT INFORMATION

MODEL	TONNAGE RANGE	FILTER SIZE & QTY	MAX. FILTER VELOCITY
E1-G10	3 Ton	20"x25"x2" (3)	@3600 CFM = 418 FPM
E2-G15	5 Ton	16"x20"x2" (8)	@6500 CFM = 464 FPM
E3-G18	10 Ton	20"x25"x2" (8)	@8000 CFM = 348 FPM
E4-920	20 Ton	16"x20"x2" (15)	@13000 CFM = 495 FPM
E5-925	30 Ton	20"x25"x2" (15)	@22000 CFM = 638 FPM



CURB/RAIL COMBINATION
USED IN PLACE OF
SINGLE CURB ON UNITS
WITH 20" AND 25" BLOWERS