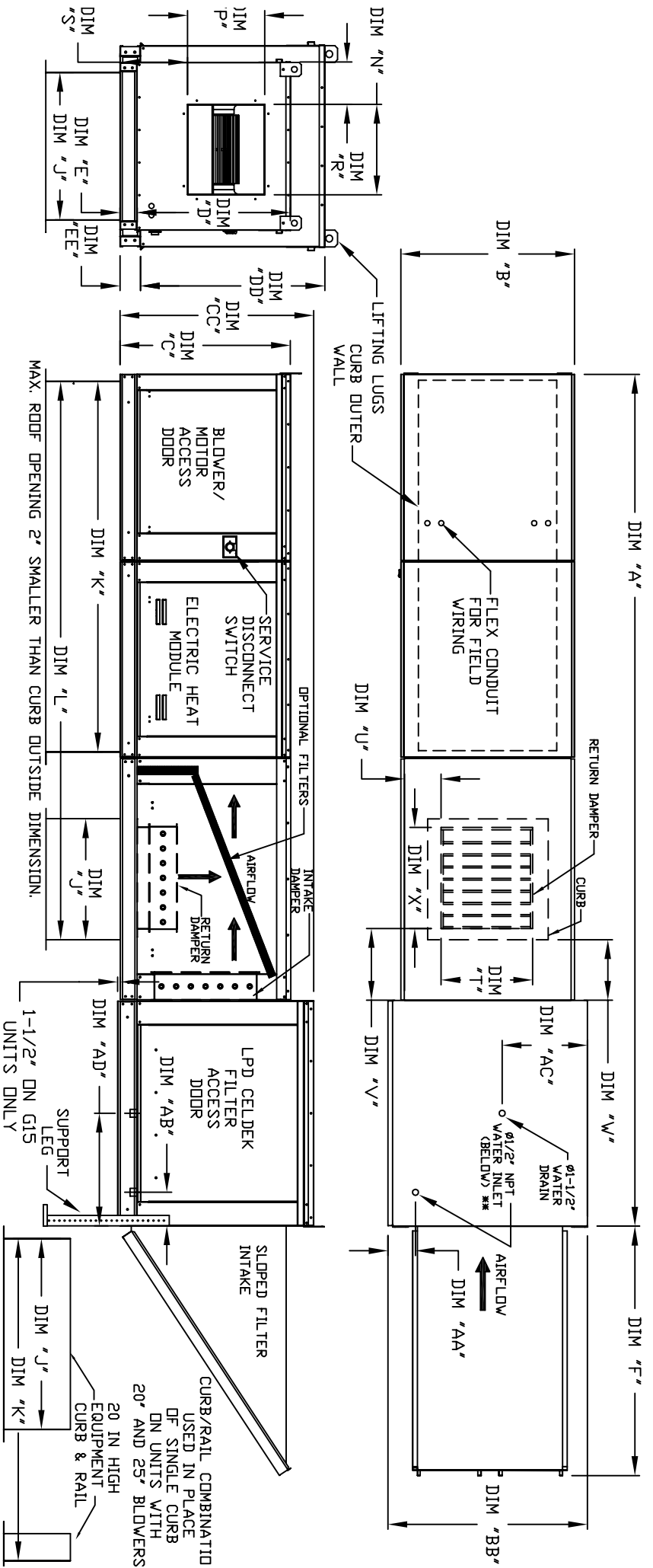


MODULAR OUTDOOR SIDE DISCHARGE ELECTRIC HEATER WITH LPD EVAPORATIVE COOLER, MIXING BOX AND INTAKE HOOD

JHL/PCMB/RS/SH
REV#1 01/09/2012



ALL DIMENSIONS ARE NOMINAL AND GIVEN IN INCHES.

MODEL	UNIT DIMENSIONS													CURB				DISCHARGE OPENING				RETURN DAMPER OPENING			
	A	B	BB	C	CC	D	DD	E	EE	F	J	K	L	N	P	R	S	T	U	V	W	X			
E1-G10	148-7/8	27-3/8	37-3/8	29-3/4	36-3/4	26-1/16	33	3-3/4	3-3/4	53-5/8	21	71	102-7/16	13-1/4	11-1/2	6-3/8	11-7/8	14	8	14	12-1/2	18			
E2-G15	162-7/8	37-3/8	41-3/8	36-3/4	44-3/8	33-1/16	38-1/8	3-3/4	3-3/4	51-5/8	31	79	115-7/16	18-3/4	16	8-5/8	14-1/16	22-3/4	8	11	7-1/2	24			
E3-G18	165	41-3/8	48-7/16	43-3/8	51-3/8	38-1/16	46-1/8	5-1/4	5-1/4	76-3/8	35	84	123-7/16	22	19	9	17-7/8	28	8	7	4-1/2	30			
E4-920	208-3/16	48-7/16	59-3/16	51-3/8	58-3/8	46-1/8	53-1/8	5-1/4	5-1/4	71-3/8	42	115-3/16	163-3/16	24-7/8	24-7/8	11-1/16	19	33	10	11	8	36			
E5-925	218-3/16	59-3/16	74-7/8	58-3/8	68-3/8	53-1/8	61-1/8	5-1/4	5-1/4	71-3/8	52-3/4	125-3/4	179-15/16	31-3/8	31-3/8	13-3/16	21-1/4	43	10	6-1/2	1-1/4	43			

UNIT INFORMATION

MODEL	FILTER SIZE & QTY		CELDEK EVAPORATIVE COOLING UNIT				WATER INLET DRAIN OPENING				OPTIONAL MIXING BOX FILTERS	
	TOP WEIGHT	MEDIA SIZE & QTY	NOZZLES	MAX. FLOW RATE	AA	AB	AC	AD	FILTER SIZE & QTY			
G10	20"x25"x2" (3)	900 LBS	25"x32"x12"	20	6.5 GPH	4-1/2	6-1/4	18	16	10"x16"x2" (5)		
G15	16"x20"x2" (6)	1275 LBS	30"x36"x12"	28	8.4 GPH	4-1/2	5-3/4	20	19	20"x25"x2" (2), 16"x25"x2" (1)		
G18	16"x20"x2" (10)	1675 LBS	38"x43"x12"	35	10.15 GPH	4-1/2	5-3/4	23-1/2	17-1/2	15"x20"x2" (4), 15"x15"x2" (2)		
920	20"x25"x2" (8)	2510 LBS	45"x54"x12"	42	12.6 GPH	4-1/2	5-3/4	28-7/8	17-1/2	18"x25"x2" (4), 16"x20"x2" (2)		
925	20"x25"x2" (8)	3245 LBS	45"x72"x12"	57	20.1 GPH	4-1/2	5-3/4	37-1/2	17-1/2	14.5"x19"x2" (12)		

** MAY VARY BASED ON WATER PRESSURE - EN DPT & TN HCC F