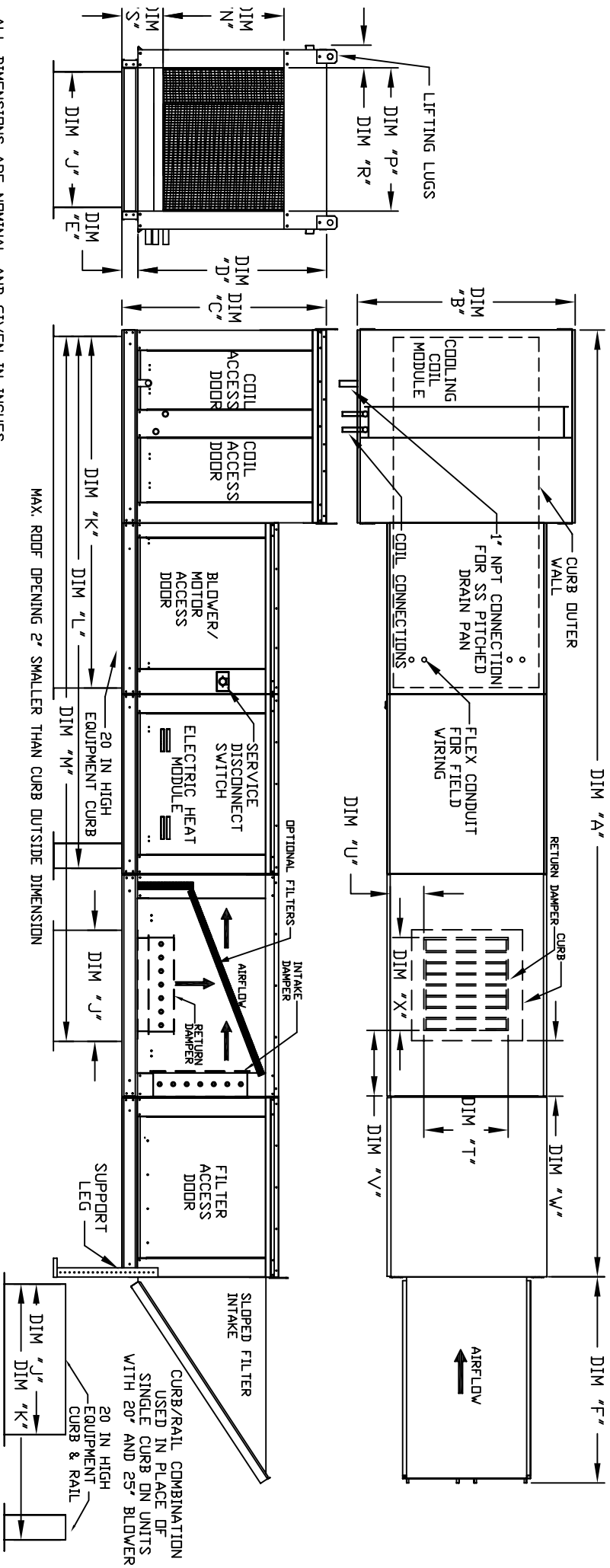


MODULAR OUTDOOR SIDE DISCHARGE ELECTRIC HEATER WITH COOLING COIL, MIXING BOX, V-BANK AND INTAKE HOOD

JHV/BRE/SH/HC
REV.#0 11/28/2011



ALL DIMENSIONS ARE NOMINAL AND GIVEN IN INCHES.

MAX. ROOF OPENING 2' SMALLER THAN CURB OUTSIDE DIMENSION

20 IN HIGH EQUIPMENT CURB & RAIL
CURB/RAIL COMBINATION USED IN PLACE OF SINGLE CURB ON UNITS WITH 20\"/>

MODEL	WEIGHT	UNIT DIMENSIONS										CURB/RAIL										DISCHARGE OPENING										RETURN DAMPER OPENING																								
		A	B	C	D	E	F	J	K	L	M	N	P	R	S	T	U	V	W	X	B	C	D	E	F	J	K	L	M	N	P	R	S	T	U	V	W	X	B	C	D	E	F	J	K	L	M	N	P	R	S	T	U	V	W	X
E1-G10	1155 LBS	191-1/8	39-3/8	42-3/4	39	3-3/4	44-3/8	21	71	113-1/4	144-11/16	17-1/2	16	11	5-3/4	14	8	14	12-1/2	18	39-3/8	42-3/4	39	3-3/4	44-3/8	21	71	113-1/4	144-11/16	17-1/2	16	11	5-3/4	14	8	14	12-1/2	18	39-3/8	42-3/4	39	3-3/4	44-3/8	21	71	113-1/4	144-11/16	17-1/2	16	11	5-3/4	14	8	14	12-1/2	18
E2-G15	1585 LBS	199-1/8	49-3/8	47-3/4	44	3-3/4	53-5/8	31	79	121-1/4	157-11/16	29-3/4	22-3/4	12-5/8	5-3/4	22-3/4	8	11	7-1/2	24	49-3/8	47-3/4	44	3-3/4	53-5/8	31	79	121-1/4	157-11/16	29-3/4	22-3/4	12-5/8	5-3/4	22-3/4	8	11	7-1/2	24	49-3/8	47-3/4	44	3-3/4	53-5/8	31	79	121-1/4	157-11/16	29-3/4	22-3/4	12-5/8	5-3/4	22-3/4	8	11	7-1/2	24
E3-G18	1925 LBS	210-1/8	54-3/8	56-3/8	51-1/8	5-1/4	56-5/8	35	84	126-1/4	165-11/16	29-5/8	30	11-1/2	7-3/8	28	8	7	4-1/2	30	54-3/8	56-3/8	51-1/8	5-1/4	56-5/8	35	84	126-1/4	165-11/16	29-5/8	30	11-1/2	7-3/8	28	8	7	4-1/2	30	54-3/8	56-3/8	51-1/8	5-1/4	56-5/8	35	84	126-1/4	165-11/16	29-5/8	30	11-1/2	7-3/8	28	8	7	4-1/2	30
E4-920	3145 LBS	262-1/2	60-7/16	64-3/8	59-1/8	5-1/4	76-3/8	42	115-3/16	169-1/2	217-1/2	36-3/4	34	12-1/2	7-3/8	33	10	11	8	36	60-7/16	64-3/8	59-1/8	5-1/4	76-3/8	42	115-3/16	169-1/2	217-1/2	36-3/4	34	12-1/2	7-3/8	33	10	11	8	36	60-7/16	64-3/8	59-1/8	5-1/4	76-3/8	42	115-3/16	169-1/2	217-1/2	36-3/4	34	12-1/2	7-3/8	33	10	11	8	36
E5-925	3945 LBS	272-1/2	79-7/16	68-7/16	63-3/16	5-1/4	71-3/8	52-3/4	125-3/16	179-1/2	234-1/4	45-1/4	43	17-1/2	7-3/8	43	10	10	6-1/2	43	79-7/16	68-7/16	63-3/16	5-1/4	71-3/8	52-3/4	125-3/16	179-1/2	234-1/4	45-1/4	43	17-1/2	7-3/8	43	10	10	6-1/2	43	79-7/16	68-7/16	63-3/16	5-1/4	71-3/8	52-3/4	125-3/16	179-1/2	234-1/4	45-1/4	43	17-1/2	7-3/8	43	10	10	6-1/2	43

UNIT INFORMATION.

MODEL	TONNAGE RANGE		FILTER SIZE & QTY		MAX. FILTER VELOCITY	
	MIN	MAX				
E1-G10	3 Ton	12.5 Ton	20"x25"x2" (3)		3600 CFM = 418 FPM	
E2-G15	5 Ton	20 Ton	16"x20"x2" (8)		6500 CFM = 464 FPM	
E3-G18	10 Ton	25 Ton	20"x25"x2" (8)		8000 CFM = 348 FPM	
E4-920	20 Ton	40 Ton	16"x20"x2" (15)		13000 CFM = 495 FPM	
E5-925	30 Ton	50 Ton	20"x25"x2" (12)		22000 CFM = 638 FPM	

MODEL	FILTER SIZE & QTY	
E1-G10	10"x16"x2" (5)	
E2-G15	20"x25"x2" (2), 16"x25"x2" (1)	
E3-G18	15"x20"x2" (4), 15"x15"x2" (2)	
E4-920	18"x25"x2" (4), 16"x20"x2" (2)	
E5-925	14"x19"x2" (12)	