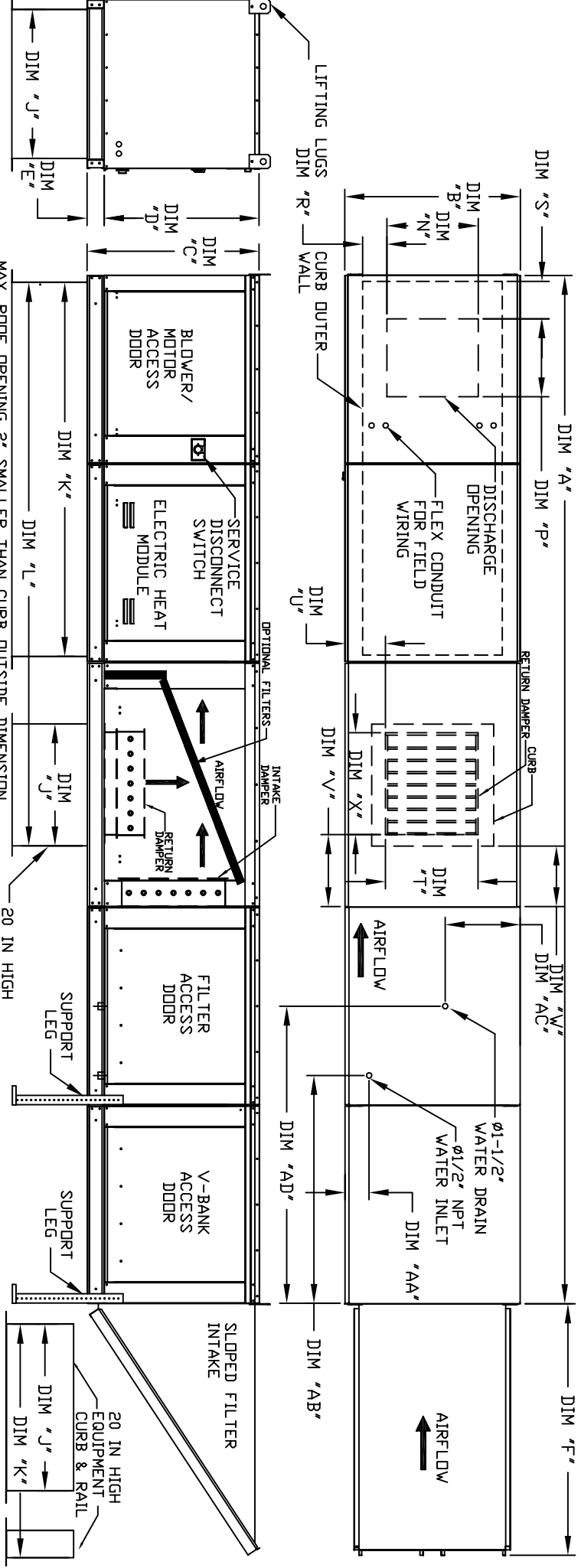


MODULAR OUTDOOR DOWN DISCHARGE ELECTRIC HEATER WITH V-BANK, EVAPORATIVE COOLER, MIXING BOX AND INTAKE HOOD

1HV2BCB8E10AH
REV. 00 09/03/2011



ALL DIMENSIONS ARE NOMINAL AND GIVEN IN INCHES.

MAX. ROOF OPENING 2' SMALLER THAN CURB OUTSIDE DIMENSION.

20 IN HIGH EQUIPMENT CURB

CURB/RAIL COMBINATION USED IN PLACE OF SINGLE CURB ON UNITS WITH 20" AND 25" BLOWER.

MODEL	UNIT DIMENSIONS													CURB					DISCHARGE OPENING					RETURN DAMPER OPENING					WATER INLET DRAIN OPENING				
	A	B	C	D	E	F	J	K	L	N	P	R	S	T	U	V	W	X	AA	AB	AC	AD											
E1-G10	181-1/8	27-3/8	29-3/4	26-1/16	3-3/4	44-3/8	21	71	102-7/16	13-1/4	11-1/2	3-7/8	5-9/16	14	8	11	12.5	18-4-1/2	38-1/2	13	48-1/4												
E2-G15	189-1/8	37-3/8	36-3/4	33-1/16	3-3/4	53-5/8	31	79	115-7/16	18-3/4	16	6-1/8	10-5/16	22-3/4	8	11	7.5	24-4-1/2	38-1/2	18	48-1/4												
E3-G18	206-1/8	41-3/8	43-3/8	38-1/16	5-1/4	51-5/8	35	84	123-7/16	22	19	6-1/2	10-5/16	28	8	7	4.5	30-4-1/2	44	20	57-1/4												
E4-920	243-9/16	48-7/16	51-3/8	46-1/8	5-1/4	76-3/8	42	115-3/16	163-3/16	24-7/8	24-7/8	8-9/16	10-5/8	33	10	11	8	36-4-1/2	41-1/8	23-1/2	52-7/8												
E5-925	253-9/16	59-3/16	58-3/8	53-1/8	5-1/4	71-3/8	52-3/4	123-3/16	179-15/16	31-3/8	31-3/8	10-11/16	12-7/8	43	10	11	8	43-4-1/2	41-1/8	28-7/8	52-7/8												

MODEL	FILTER SIZE & QTY	MAX. FILTER VELOCITY
E1-G10	16"x20"x2" (3)	@3600 CFM = 686 FPM
E2-G15	20"x25"x2" (3)	@6500 CFM = 754 FPM
E3-G18	16"x20"x2" (6)	@8000 CFM = 762 FPM
E4-920	16"x20"x2" (10)	@13000 CFM = 743 FPM
E5-925	20"x25"x2" (8)	@22000 CFM = 956 FPM

STANDARD EVAPORATIVE COOLING UNIT				
MODEL	FILTER SIZE & QTY	FILTER SIZE & QTY	TOT. WEIGHT	VEL. @ MAX. CFM/NOZZLES
E1-G10	20"x25"x2" (3)	10"x16"x2" (5)	930 LBS	406 FPM
E2-G15	16"x20"x2" (8)	16"x25"x2" (3)	1335 LBS	429 FPM
E3-G18	20"x25"x2" (8)	20"x25"x2" (8)	1660 LBS	348 FPM
E4-920	16"x20"x2" (15)	16"x20"x2" (15)	2695 LBS	572 FPM
E5-925	20"x25"x2" (8)	20"x25"x2" (12)	3445 LBS	638 FPM

CELDEK EVAPORATIVE COOLING UNIT				
MODEL	FILTER SIZE & QTY	FILTER SIZE & QTY	TOT. WEIGHT	VEL. @ MAX. CFM/NOZZLES
E1-G10	20"x25"x2" (3)	10"x16"x2" (5)	935 LBS	406 FPM
E2-G15	16"x20"x2" (8)	16"x25"x2" (3)	1330 LBS	429 FPM
E3-G18	20"x25"x2" (8)	20"x25"x2" (8)	1650 LBS	348 FPM
E4-920	16"x20"x2" (15)	16"x20"x2" (15)	2665 LBS	572 FPM
E5-925	20"x25"x2" (8)	20"x25"x2" (12)	3405 LBS	638 FPM

** MAX EVAP WATER PRESSURE = 50 PSI @ 70 DEG F