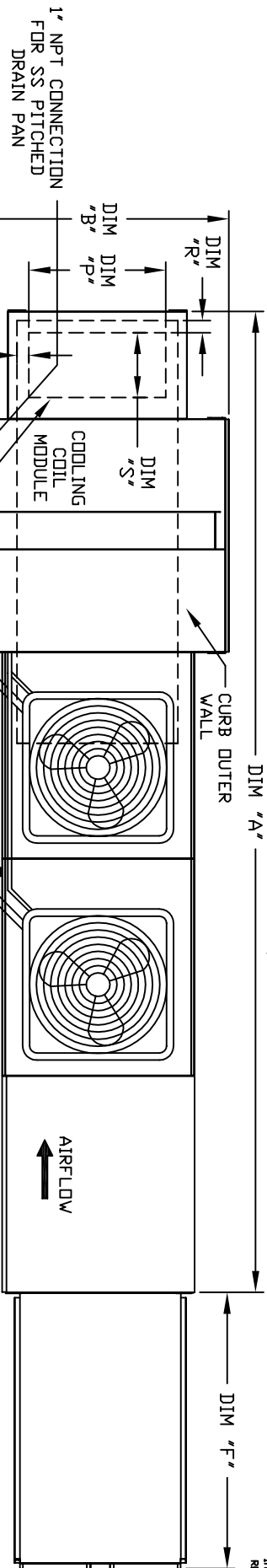
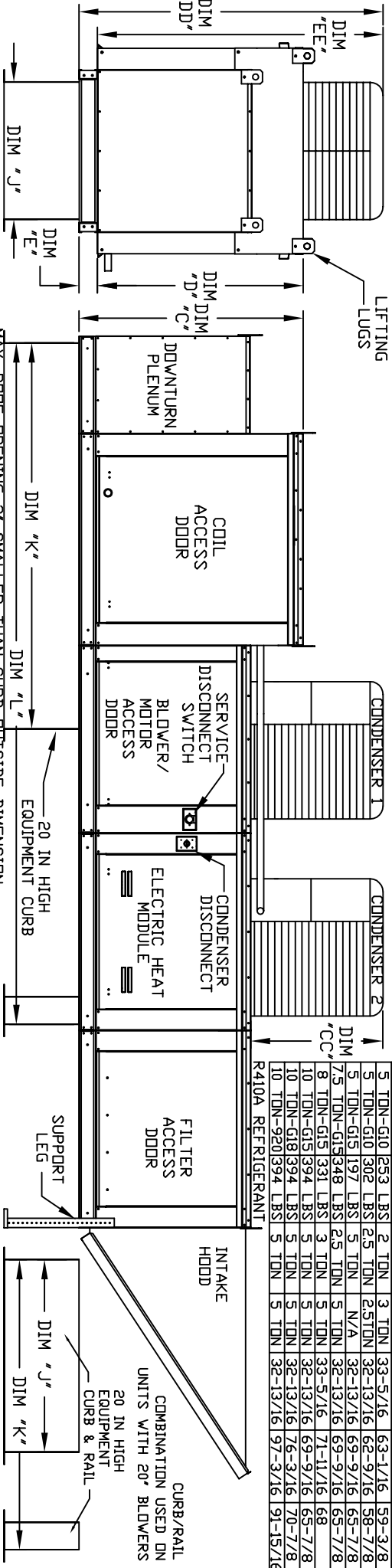


MODULAR OUTDOOR DOWN DISCHARGE ELECTRIC HEATER PACKAGED UNIT WITH COOLING, V-BANK AND INTAKE HOOD

1HV2BSHACCP-ARU
REV#7 06/15/2015



MODEL	WEIGHT*	CONDENSER INFORMATION		CC	DD	EE
		#1	#2			
2 TON-G10	119 LBS	2 TON	N/A	26-5/16	56-1/16	52-3/8
3 TON-G10	134 LBS	3 TON	N/A	33-5/16	63-1/16	59-3/8
5 TON-G10	253 LBS	2 TON	3 TON	33-5/16	63-1/16	59-3/8
5 TON-G10	302 LBS	2.5 TON	2.5 TON	32-13/16	62-9/16	58-7/8
5 TON-G10	302 LBS	2.5 TON	2.5 TON	32-13/16	62-9/16	58-7/8
7.5 TON-G15	197 LBS	5 TON	N/A	32-13/16	69-9/16	65-7/8
7.5 TON-G15	348 LBS	2.5 TON	5 TON	32-13/16	69-9/16	65-7/8
8 TON-G15	331 LBS	3 TON	5 TON	33-5/16	71-11/16	68
10 TON-G15	394 LBS	5 TON	5 TON	32-13/16	69-9/16	65-7/8
10 TON-G18	394 LBS	5 TON	5 TON	32-13/16	76-3/16	70-7/8
10 TON-G20	394 LBS	5 TON	5 TON	32-13/16	97-3/16	91-15/16



MODEL	WEIGHT	UNIT DIMENSIONS												
		A	B	C	D	E	F	J	K	L	N	P	R	S
E1-G10	1080 LBS	167-1/4	39-3/8	42-3/4	39	3-3/4	44-3/8	21	71	131-5/8	6-1/8	13-7/8	3-1/4	11-1/2
E2-G15	1485 LBS	181-1/4	49-3/8	47-3/4	44	3-3/4	53-5/8	31	79	145-5/8	6-7/8	22-3/8	3	18
E3-G18	1785 LBS	192-1/4	54-3/8	56-3/8	51-1/8	5-1/4	51-5/8	35	84	150-5/8	8-7/8	22-3/8	3	18
E4-920	2860 LBS	238-9/16	60-7/16	64-3/8	59-1/8	5-1/4	76-3/8	42	115-3/16	199-7/8	7-7/8	31-1/2	3-1/4	23-1/2

MODEL	TONNAGE RANGE		FILTER SIZE & QTY	MAX. FILTER VELOCITY
	MIN	MAX		
E1-G10	2 Ton	5 Ton	20"x25"x2" (3)	@3600 CFM = 418 FPM
E2-G15	5 Ton	10 Ton	16"x20"x2" (8)	@6500 CFM = 464 FPM
E3-G18	10 Ton	10 Ton	20"x25"x2" (8)	@8000 CFM = 348 FPM
E4-920	10 Ton	10 Ton	16"x20"x2" (15)	@13000 CFM = 495 FPM