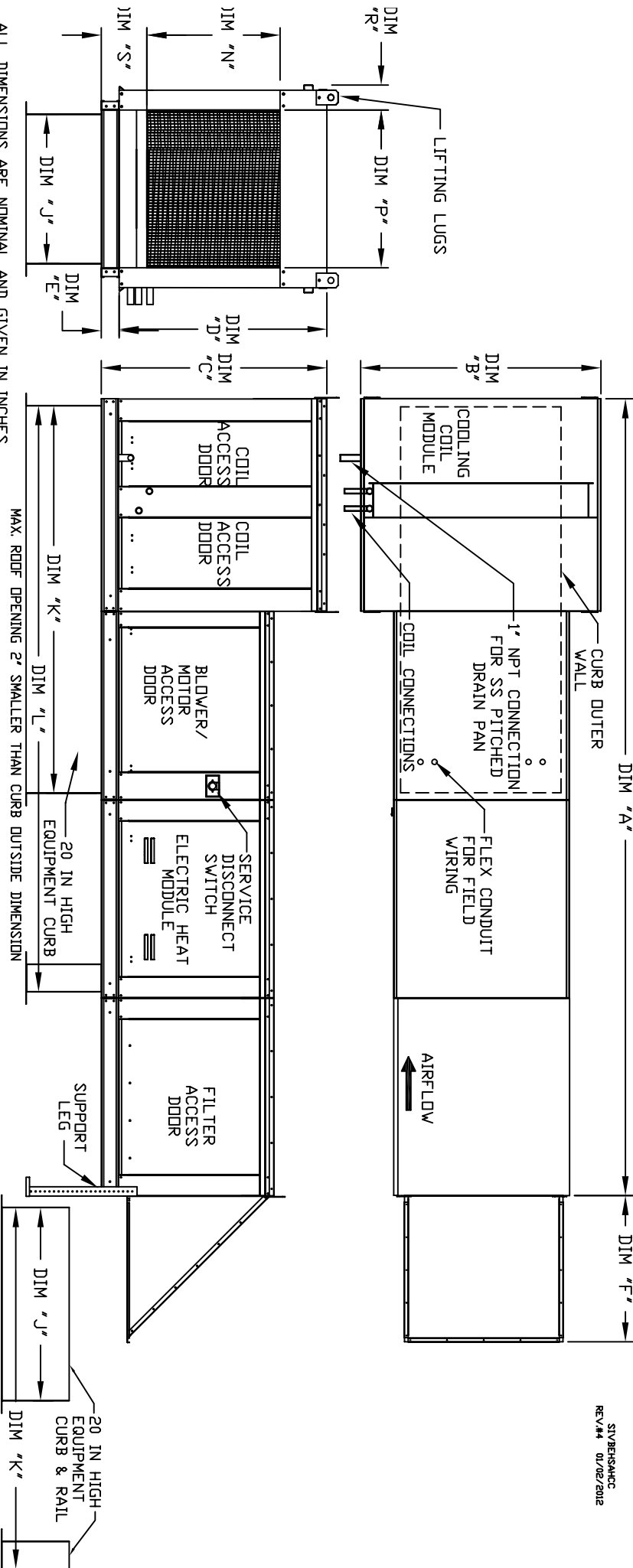


MODULAR OUTDOOR SIDE DISCHARGE ELECTRIC HEATER WITH COOLING COIL, V-BANK AND SCREEN INTAKE



ALL DIMENSIONS ARE NOMINAL AND GIVEN IN INCHES.

MAX. ROOF OPENING 2" SMALLER THAN CURB OUTSIDE DIMENSION

MODEL	WEIGHT	UNIT DIMENSIONS											CURB/RAIL		DISCHARGE OPENING				
		A	B	C	D	E	F	J	K	L	N	P	R	S	P	R	S		
E1-G10	980 LBS	148-7/8	39-3/8	42-3/4	39	3-3/4	22-3/8	21	71	113-1/4	17-1/2	16	11	5-3/4					
E2-G15	1340 LBS	156-7/8	49-3/8	47-3/4	44	3-3/4	30-5/16	31	79	121-1/4	29-3/4	22-3/4	12-5/8	5-3/4					
E3-G18	1605 LBS	167-7/8	54-3/8	56-3/8	51-1/8	5-1/4	34-3/16	35	84	126-1/4	29-5/8	30	11-1/2	7-3/8					
E4-920	2560 LBS	208-3/16	60-7/16	64-3/8	59-1/8	5-1/4	47-1/4	42	115-3/16	169-1/2	36-3/4	34	12-1/2	7-3/8					
E5-925	3280 LBS	218-3/16	79-7/16	68-7/16	63-3/16	5-1/4	49-5/8	52-3/4	125-3/16	179-1/2	45-1/4	43	17-1/2	7-3/8					

UNIT INFORMATION.

MODEL	TONNAGE RANGE		FILTER SIZE & QTY		MAX. FILTER VELOCITY
	MIN	MAX			
E1-G10	3 Ton	12.5 Ton	20"x25"x2" (3)		@3600 CFM = 418 FPM
E2-G15	5 Ton	20 Ton	16"x20"x2" (8)		@6500 CFM = 464 FPM
E3-G18	10 Ton	25 Ton	20"x25"x2" (8)		@8000 CFM = 348 FPM
E4-920	20 Ton	40 Ton	16"x20"x2" (15)		@13000 CFM = 495 FPM
E5-925	30 Ton	50 Ton	20"x25"x2" (15)		@22000 CFM = 638 FPM

SIVBERSARC
REV 1/44 01/02/2012

CURB/RAIL COMBINATION
USED IN PLACE OF
SINGLE CURB ON UNITS
WITH 20" AND 25" BLOWERS