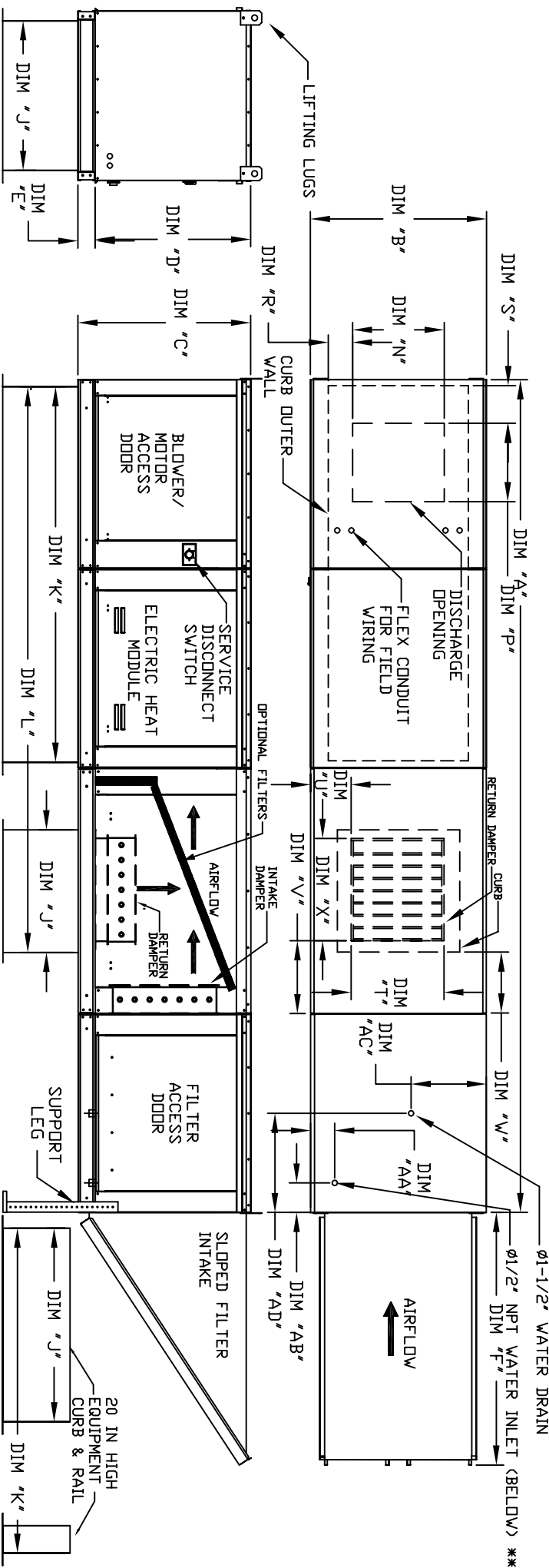


MODULAR OUTDOOR DOWN DISCHARGE ELECTRIC HEATER WITH EVAPORATIVE COOLER, MIXING BOX AND INTAKE HOOD

1HECBEHD4H  
REV. #0 08/03/2011



ALL DIMENSIONS ARE NOMINAL AND GIVEN IN INCHES.

MAX. ROOF OPENING 2" SMALLER THAN CURB OUTSIDE DIMENSION.

CURB/RAIL COMBINATION USED IN PLACE OF SINGLE CURB ON UNITS WITH 20" AND 25" BLOWERS

MODEL	UNIT DIMENSIONS										DISCHARGE OPENING										RETURN DAMPER OPENING										WATER INLET DRAIN OPENING														
	A	B	C	D	E	F	J	K	L	N	P	R	S	T	U	V	W	X	AA	AB	AC	AD	U	V	W	X	AA	AB	AC	AD	U	V	W	X	AA	AB	AC	AD							
E1-G10	148-7/8	27-3/8	29-3/4	26-1/16	3-3/4	44-3/8	21	71	102-7/16	13-1/4	11-1/2	3-7/8	5-9/16	14	8	14	12.5	18.4	1/2	6-1/4	13	16	8	14	14	14	12.5	18.4	1/2	6-1/4	13	16	8	14	14	14	12.5	18.4	1/2	6-1/4	13	16			
E2-G15	156-7/8	37-3/8	36-3/4	33-1/16	3-3/4	53-5/8	31	79	115-7/16	18-3/4	16	6-1/8	8-5/16	22-3/4	8	11	7.5	24.4	1/2	6-1/4	18	16	11	11	11	11	7.5	24.4	1/2	6-1/4	18	16	11	11	11	11	7.5	24.4	1/2	6-1/4	18	16			
E3-G18	167-7/8	41-3/8	43-3/8	38-1/16	5-1/4	51-5/8	35	84	123-7/16	22	19	6-1/2	10-5/16	28	8	7	4.5	30.4	1/2	5-3/4	20	19	12	12	12	12	4.5	30.4	1/2	5-3/4	20	19	12	12	12	12	4.5	30.4	1/2	5-3/4	20	19			
E4-920	208-3/16	48-7/16	51-3/8	46-1/8	5-1/4	76-3/8	42	115-3/16	163-3/16	24-7/8	24-7/8	8-9/16	10-5/8	33	10	11	8	36.4	1/2	5-3/4	23	20	13	13	13	13	8	36.4	1/2	5-3/4	23	20	13	13	13	13	8	36.4	1/2	5-3/4	23	20			
E5-925	218-3/16	59-3/16	58-3/8	53-1/8	5-1/4	71-3/8	52-3/4	123-3/16	179-15/16	31-3/8	31-3/8	10-11/16	12-7/8	43	10	10	6-1/2	1-1/4	43.4	1/2	5-3/4	28	23	14	14	14	14	6-1/2	1-1/4	43.4	1/2	5-3/4	28	23	14	14	14	14	6-1/2	1-1/4	43.4	1/2	5-3/4	28	23

UNIT INFORMATION

MODEL	FILTER SIZE & QTY		MAX. FILTER VELOCITY	STANDARD EVAPORATIVE COOLING UNIT				CELDEK EVAPORATIVE COOLING UNIT					
	MODEL	FILTER SIZE & QTY		TOT. WEIGHT	MEDIA SIZE & QTY	VEL. & MAX. CFM/NOZZLES	MAX. FLOW RATE	TOT. WEIGHT	MEDIA SIZE & QTY	VEL. & MAX. CFM/NOZZLES	MAX. FLOW RATE		
E1-G10	16"x20"x2" (3)	@3600 CFM = 686 FPM		835 LBS	20"x25"x2" (3)	406 FPM	6	3 GPH	840 LBS	20"x24"x12" (2)	1050 FPM	12	3.9 GPH
E2-G15	20"x25"x2" (3)	@6500 CFM = 754 FPM		1200 LBS	16"x20"x2" (8)	429 FPM	10	5 GPH	1195 LBS	25"x32"x12" (2)	1080 FPM	20	6.5 GPH
E3-G18	16"x20"x2" (6)	@8000 CFM = 762 FPM		1495 LBS	20"x25"x2" (8)	348 FPM	14	7 GPH	1485 LBS	30"x36"x12" (2)	1067 FPM	28	8.4 GPH
E4-920	16"x20"x2" (10)	@13000 CFM = 743 FPM		2460 LBS	16"x20"x2" (15)	572 FPM	24	12 GPH	2430 LBS	38"x43"x12" (2)	1322 FPM	35	10.15 GPH
E5-925	20"x25"x2" (8)	@22000 CFM = 956 FPM		3150 LBS	20"x25"x2" (12)	638 FPM	30	15 GPH	3110 LBS	45"x54"x12" (2)	1304 FPM	42	12.6 GPH

OPTIONAL MIXING BOX FILTERS

MODEL	FILTER SIZE & QTY
E1-G10	10"x16"x2" (5)
E2-G15	20"x25"x2" (2), 16"x25"x2" (1)
E3-G18	15"x20"x2" (4), 15"x15"x2" (2)
E4-920	18"x25"x2" (4), 16"x20"x2" (2)
E5-925	14.5"x19"x2" (12)

\*\* MAX EVAP WATER PRESSURE = 50 PSI @ 70 DEG F