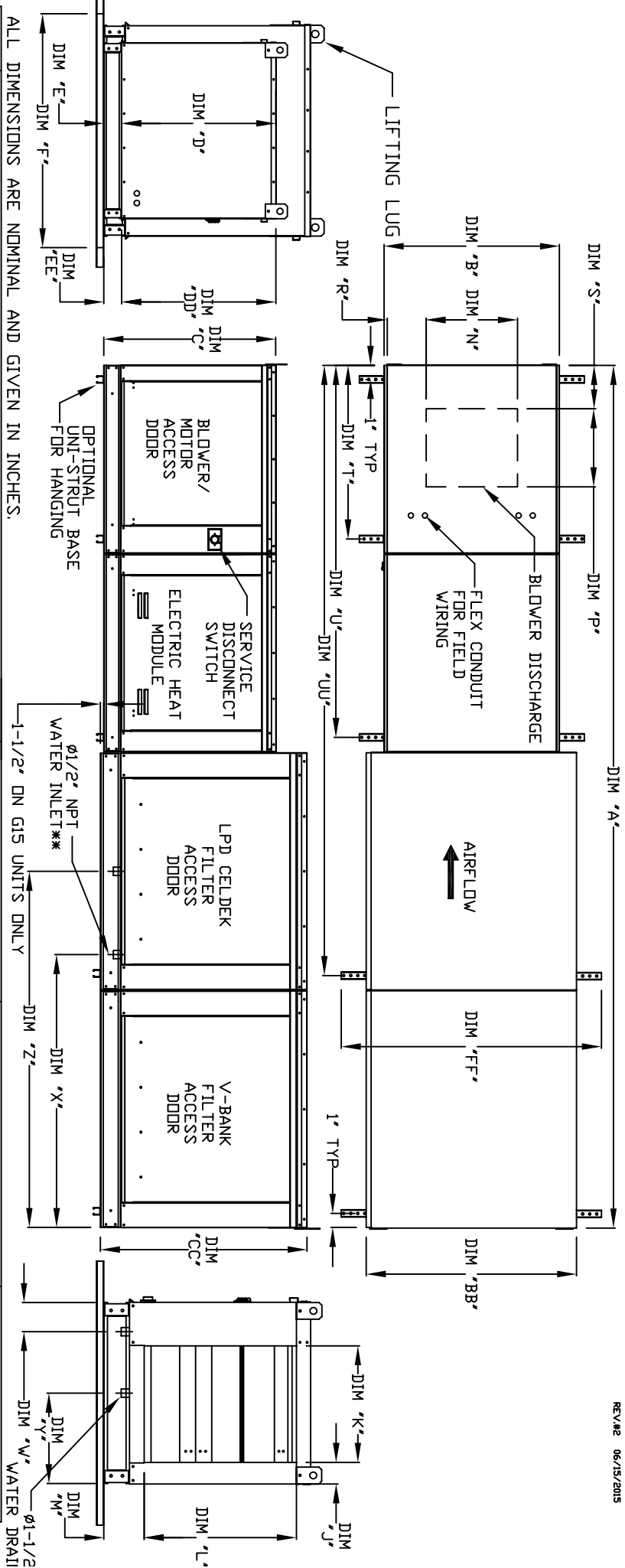


MODULAR INDOOR DOWN DISCHARGE ELECTRIC HEATER WITH V-BANK AND LPD EVAPORATIVE COOLER

REV#2 06/15/2015



UNIT DIMENSIONS

MODEL	A	B	BB	C	CC	D	DD	E	EE	F	FF	J	K	L	M	N	P	R	S	T	U	UU
E1-G10	138-7/8	27-3/8	36-3/4	29-3/4	36-3/4	42-1/16	33	3-3/4	3-3/4	36	48	5-1/8	24-3/4	28-7/8	5-3/4	13-1/4	11-1/2	6-3/8	7-1/4	31-1/8	73-1/4	105-3/8
E2-G15	138-7/8	37-3/8	40-3/4	36-3/4	43-3/8	51-1/16	38-1/8	3-3/4	3-3/4	48	60	4-5/8	29-1/4	33-7/8	7-1/2	18-3/4	16	8-5/8	10	39-1/8	81-1/4	113-3/8
E3-G18	158-1/8	41-3/8	47-7/8	43-3/8	51-3/8	58-1/16	46-1/8	5-1/4	5-1/4	60	72	4-5/8	36-1/4	41-7/8	7-1/2	22	19	9	12	44-1/8	86-1/4	124-3/8
E4-G20	189-1/4	48-7/16	58-5/8	51-3/8	58-3/8	66-1/8	53-1/8	5-1/4	5-1/4	72	84	4-5/8	47	48-7/8	7-1/2	24-7/8	24-7/8	11-1/16	12-1/4	63-3/16	117-3/8	152-5/8
E5-G25	199-1/4	59-3/16	74-7/8	58-3/8	66-3/8	74-1/8	53-1/8	5-1/4	5-1/4	90	108	4-5/8	63-1/4	48-7/8	7-1/2	31-3/8	31-3/8	13-3/16	14-1/2	73-3/16	127-3/8	162-5/8

INTAKE OPENING

DISCHARGE OPENING

WATER DRAIN

UNIT INFORMATION

MODEL	TOT. WEIGHT	MEDIA SIZE & QTY	NOZZLES	MAX. FLOW RATE	W	X	Y	Z	V-BANK FILTER SIZE & QTY
G10	895 LBS	25"x32"x12"	20	6.5 GPH	4-1/2	38-1/2	18	48-1/4	16"x20"x2" (8)
G15	1135 LBS	30"x36"x12"	28	8.4 GPH	4-1/2	44	20	57-1/4	20"x25"x2" (8)
G18	1420 LBS	38"x43"x12"	35	10.15 GPH	4-1/2	41-1/8	23-1/2	52-7/8	16"x20"x2" (15)
G20	2105 LBS	45"x54"x12"	42	12.6 GPH	4-1/2	41-1/8	28-7/8	52-7/8	20"x25"x2" (12)
G25	2740 LBS	45"x72"x12"	57	20.1 GPH	4-1/2	41-1/8	37-1/2	52-7/8	20"x25"x2" (12)

CELDEK EVAPORATIVE COOLING UNIT WATER INLET DRAIN OPENING

WATER DRAIN

W W MAY C/VAD V/ATFD D/RECC/ID/DE - EN DGT & TN MFC C