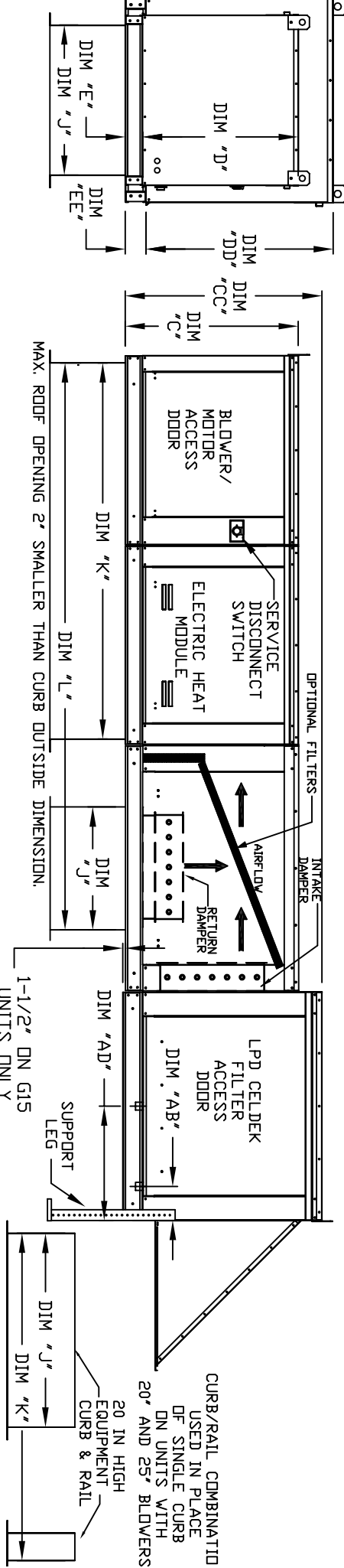
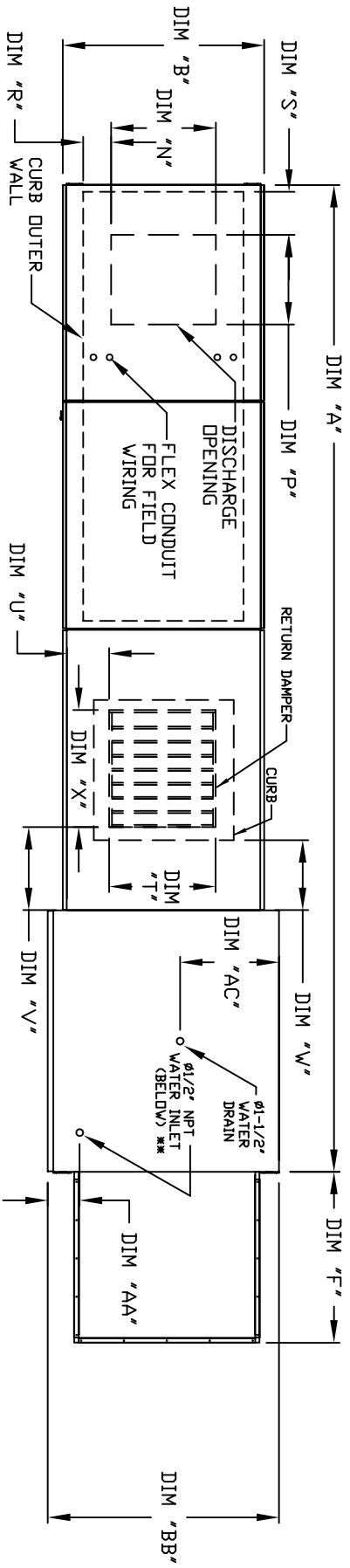


MODULAR OUTDOOR DOWN DISCHARGE ELECTRIC HEATER WITH LPD EVAPORATIVE COOLER, MIXING BOX AND SCREEN INTAKE

SILPRECH04AH
REV#1 01/09/2012



ALL DIMENSIONS ARE NOMINAL AND GIVEN IN INCHES.

MODEL	A	B	BB	C	CC	D	DD	E	EE	F	J	K	L	N	P	R	S	T	U	V	W	X
148-7/8	27-3/8	37-3/8	29-3/4	36-3/4	26-1/16	33	3-3/4	3-3/4	30-5/16	21	71	102-7/16	13-1/4	11-1/2	3-7/8	1-3/4	14	8	14	12-1/2	18	18
162-7/8	31-3/8	41-3/8	36-3/4	44-3/8	33-1/16	38-1/8	3-3/4	3-3/4	34-3/16	31	79	115-7/16	18-3/4	16	6-1/8	5-1/2	22-3/4	8	11	7-1/2	24	24
165	41-3/8	48-7/16	43-3/8	51-3/8	38-1/16	46-1/8	5-1/4	5-1/4	47-1/4	35	84	123-7/16	22	19	6-1/2	7	28	8	7	4-1/2	30	30
208-3/16	48-7/16	59-3/16	51-3/8	58-3/8	46-1/8	53-1/8	5-1/4	5-1/4	49-5/8	42	115-3/16	163-3/16	24-7/8	24-7/8	8-9/16	1-1/8	33	10	11	8	36	36
218-3/16	59-3/16	74-7/8	58-3/8	68-3/8	53-1/8	65-1/8	5-1/4	5-1/4	59-5/8	52-3/4	125-3/16	179-15/16	31-3/8	31-3/8	10-11/16	13-1/16	43	10	10	6-1/2	43	43

MODEL	UNIT INFORMATION	CELDEK EVAPORATIVE COOLING UNIT	WATER INLET	DRAIN OPENING	OPTIONAL MIXING BOX FILTERS
G10	20'x25'x2' (3)	TOT. WEIGHT 870 LBS	AA 4-1/2	AC 16	20'x25'x2' (2), 16'x25'x2' (1)
G15	16'x20'x2' (6)	NOZZLES 20	AB 6-1/4	AD 18	10'x16'x2' (5)
G18	16'x20'x2' (10)	MAX. FLOW RATE 6.5 GPH	AA 4-1/2	AC 19	20'x25'x2' (2), 15'x20'x2' (4), 15'x15'x2' (2)
G20	20'x25'x2' (8)	28	AB 5-3/4	AD 20	18'x25'x2' (4), 16'x20'x2' (2)
G25	20'x25'x2' (8)	35	AA 4-1/2	AD 17-1/2	14.5'x19'x2' (12)
G35	20'x25'x2' (8)	42	AB 5-3/4	AD 17-1/2	
G45	20'x25'x2' (8)	57	AA 4-1/2	AD 17-1/2	

*** MAY VARY BASED ON SPECIFIC - EN DAT & 70 HFC C