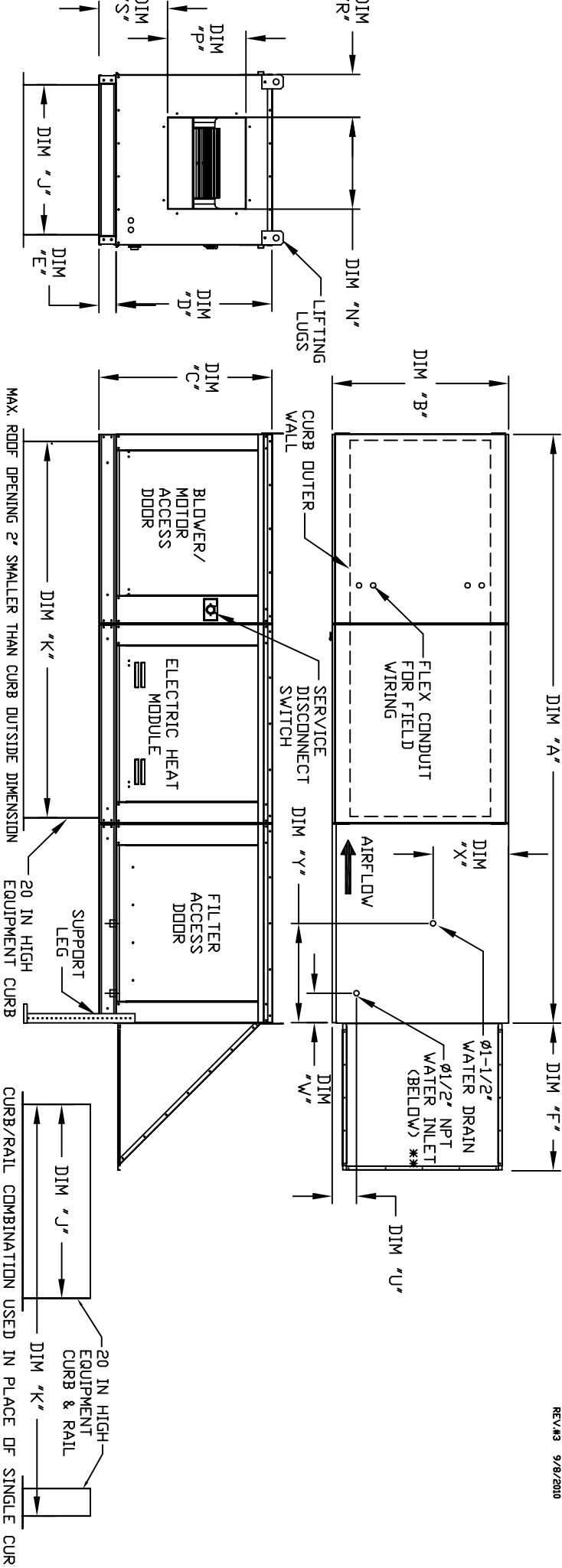


MODULAR OUTDOOR SIDE DISCHARGE ELECTRIC HEATER WITH EVAPORATIVE COOLER AND SCREEN INTAKE

REV#3 9/8/2010



ALL DIMENSIONS ARE NOMINAL AND GIVEN IN INCHES.

MODEL	UNIT DIMENSIONS															
	A	B	C	D	E	F	J	K	N	P	R	S	U	V	X	Y
E1-G10	106-5/8	27-3/8	29-3/4	26-1/16	3-3/4	22-3/8	21	71	13-1/4	11-1/2	6-3/8	11-7/8	4-1/2	6-1/4	13	16
E2-G15	114-5/8	37-3/8	36-3/4	33-1/16	3-3/4	30-5/16	31	79	18-3/4	16	8-5/8	14-1/16	4-1/2	6-1/4	18	16
E3-G18	125-5/8	41-3/8	43-3/8	38-1/16	5-1/4	34-3/16	35	84	22	19	9	17-7/8	4-1/2	5-3/4	20	19
E4-920	153-7/8	48-7/16	51-3/8	46-1/8	5-1/4	47-1/4	42	115-3/16	24-7/8	24-7/8	11-1/16	19-1/8	4-1/2	5-3/4	23-1/2	17-1/2
E5-925	163-7/8	59-3/16	58-3/8	53-1/8	5-1/4	49-5/8	52-3/4	125-3/16	31-3/8	31-3/8	13-3/16	21-9/16	4-1/2	5-3/4	28-7/8	17-1/2

UNIT INFORMATION

MODEL	STANDARD EVAPORATIVE COOLING UNIT					
	TOT. WEIGHT	MEDIA SIZE & QTY	VEL. @ MAX. CFM/INCHES	MAX. FLOW RATE		
G10	660 LBS	20"x25"x2" (3)	406 FPM	6	3 GPH	
G15	955 LBS	16"x20"x2" (8)	429 FPM	10	5 GPH	
G18	1175 LBS	20"x25"x2" (8)	572 FPM	14	7 GPH	
920	1875 LBS	16"x20"x2" (15)	572 FPM	24	12 GPH	
925	2485 LBS	20"x25"x2" (12)	638 FPM	30	15 GPH	

MODEL	CELDEK EVAPORATIVE COOLING UNIT					
	TOT. WEIGHT	MEDIA SIZE & QTY	VEL. @ MAX. CFM/INCHES	MAX. FLOW RATE		
G10	665 LBS	20"x24"x12"	1050 FPM	12	3.9 GPH	
G15	950 LBS	25"x32"x12"	1080 FPM	20	6.5 GPH	
G18	1165 LBS	30"x36"x12"	1067 FPM	28	8.4 GPH	
920	1845 LBS	38"x43"x12"	1322 FPM	35	10.15 GPH	
925	2445 LBS	45"x54"x12"	1304 FPM	42	12.6 GPH	