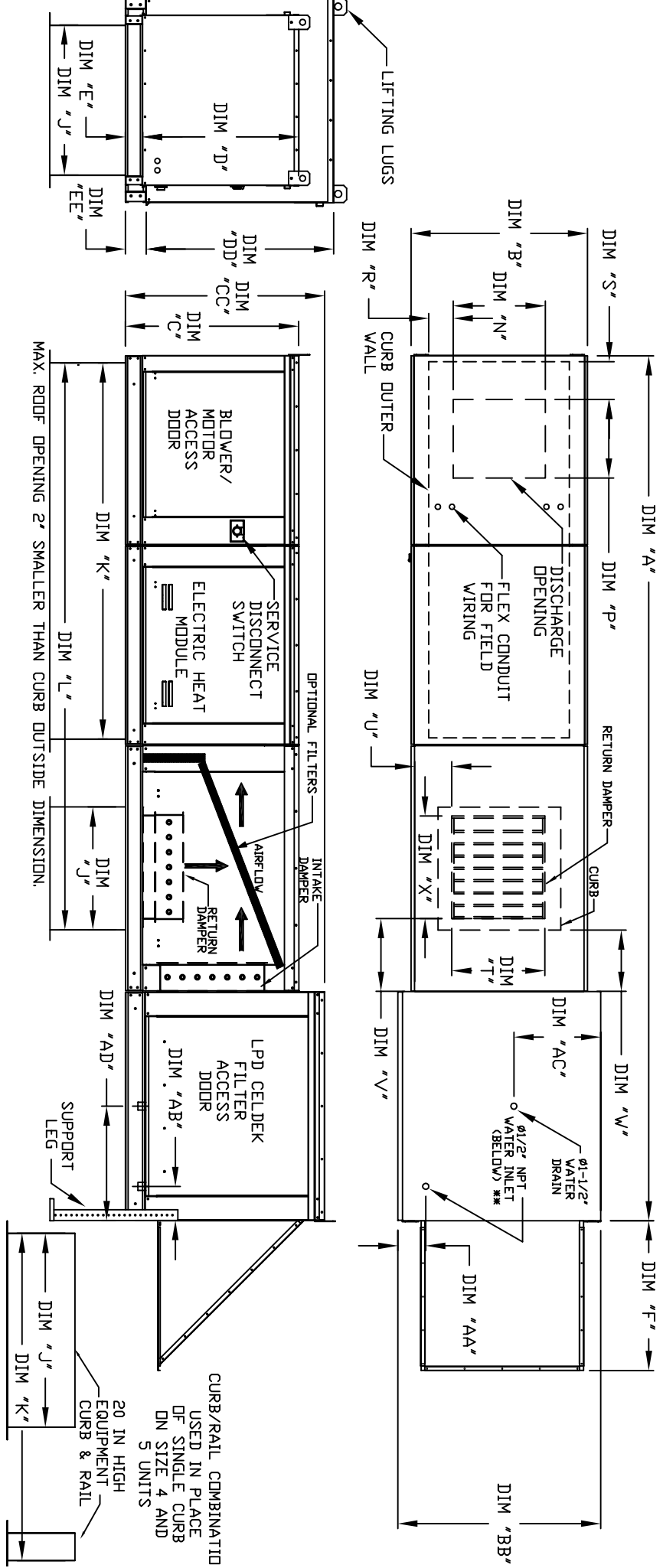


MODULAR OUTDOOR DOWN DISCHARGE ELECTRIC HEATER WITH LPD EVAPORATIVE COOLER, MIXING BOX AND SCREEN INTAKE

SLSPECBHEH04H
REV A2 09/13/2016



ALL DIMENSIONS ARE NOMINAL AND GIVEN IN INCHES.

MODEL	UNIT DIMENSIONS												CURB				DISCHARGE OPENING				RETURN DAMPER OPENING			
	A	B	BB	C	CC	D	DD	E	EE	F	J	K	L	N	P	R	S	T	U	V	W	X		
E1	148-7/8	27-3/8	37-3/8	29-3/4	36-3/4	26-1/16	33	3-3/4	3-3/4	30-5/16	21	71	102-7/16	13-1/4	11-1/2	3-7/8	1-3/4	14	8	14	12-1/2	18		
E2	162-7/8	31-3/8	41-3/8	36-3/4	44-3/8	33-1/16	38-1/8	3-3/4	3-3/4	34-3/16	31	79	115-7/16	18-3/4	16	6-1/8	5-1/2	22-3/4	8	11	7-1/2	24		
E3	165	41-3/8	48-7/16	43-3/8	51-3/8	38-1/16	46-1/8	5-1/4	4-7/16	47-1/4	35	84	123-7/16	22	19	6-1/2	7	28	8	7	4-1/2	30		
E4	208-3/16	48-7/16	59-3/16	51-3/8	58-3/8	46-1/8	53-1/8	5-1/4	4-9/8	49-5/8	42	115-3/16	163-3/16	24-7/8	24-7/8	8-9/16	1-1/8	33	10	11	8	36		
E5	218-3/16	59-3/16	74-7/8	58-3/8	58-3/8	53-1/8	53-1/8	5-1/4	4-9-5/8	52-3/4	125-3/4	125-3/4	161-7/9-15/16	31-3/8	31-3/8	10-11/16	13-1/16	43	10	6-1/2	1-1/4	43		

UNIT INFORMATION

MODEL	FILTER SIZE & QTY	CELDEK EVAPORATIVE COOLING UNIT				WATER INLET				DRAIN OPENING				OPTIONAL MIXING BOX FILTERS			
		TOT. WEIGHT	MEDIA SIZE & QTY	NOZZLES	MAX. FLOW RATE	AA	AB	AC	AD	FILTER SIZE & QTY	FILTER SIZE & QTY	FILTER SIZE & QTY	FILTER SIZE & QTY				
E1	20"x25"x2" (3)	870 LBS	25"x32"x12"	20	6.5 GPH	4-1/2	6-1/4	18	16	20"x25"x2" (2), 16"x25"x2" (1)	10"x16"x2" (5)	15"x20"x2" (4), 15"x15"x2" (2)	18"x25"x2" (4), 16"x20"x2" (2)	14.5"x19"x2" (12)			
E2	16"x20"x2" (6)	235 LBS	30"x36"x12"	28	8.4 GPH	4-1/2	5-3/4	20	19	15"x20"x2" (2), 16"x25"x2" (1)	10"x16"x2" (5)	15"x20"x2" (4), 15"x15"x2" (2)	18"x25"x2" (4), 16"x20"x2" (2)	14.5"x19"x2" (12)			
E3	16"x20"x2" (10)	156 LBS	38"x43"x12"	35	10.15 GPH	4-1/2	5-3/4	23-1/2	17-1/2	15"x20"x2" (2), 16"x25"x2" (1)	10"x16"x2" (5)	15"x20"x2" (4), 15"x15"x2" (2)	18"x25"x2" (4), 16"x20"x2" (2)	14.5"x19"x2" (12)			
E4	20"x25"x2" (8)	2420 LBS	45"x54"x12"	42	12.6 GPH	4-1/2	5-3/4	28-7/8	17-1/2	18"x25"x2" (4), 16"x20"x2" (2)	10"x16"x2" (5)	15"x20"x2" (4), 15"x15"x2" (2)	18"x25"x2" (4), 16"x20"x2" (2)	14.5"x19"x2" (12)			
E5	20"x25"x2" (8)	3155 LBS	45"x72"x12"	57	20.1 GPH	4-1/2	5-3/4	37-1/2	17-1/2	14.5"x19"x2" (12)	10"x16"x2" (5)	15"x20"x2" (4), 15"x15"x2" (2)	18"x25"x2" (4), 16"x20"x2" (2)	14.5"x19"x2" (12)			

** MAY VARY BASED ON SPECIFIC MODEL - EN DAT A 70 HFC C