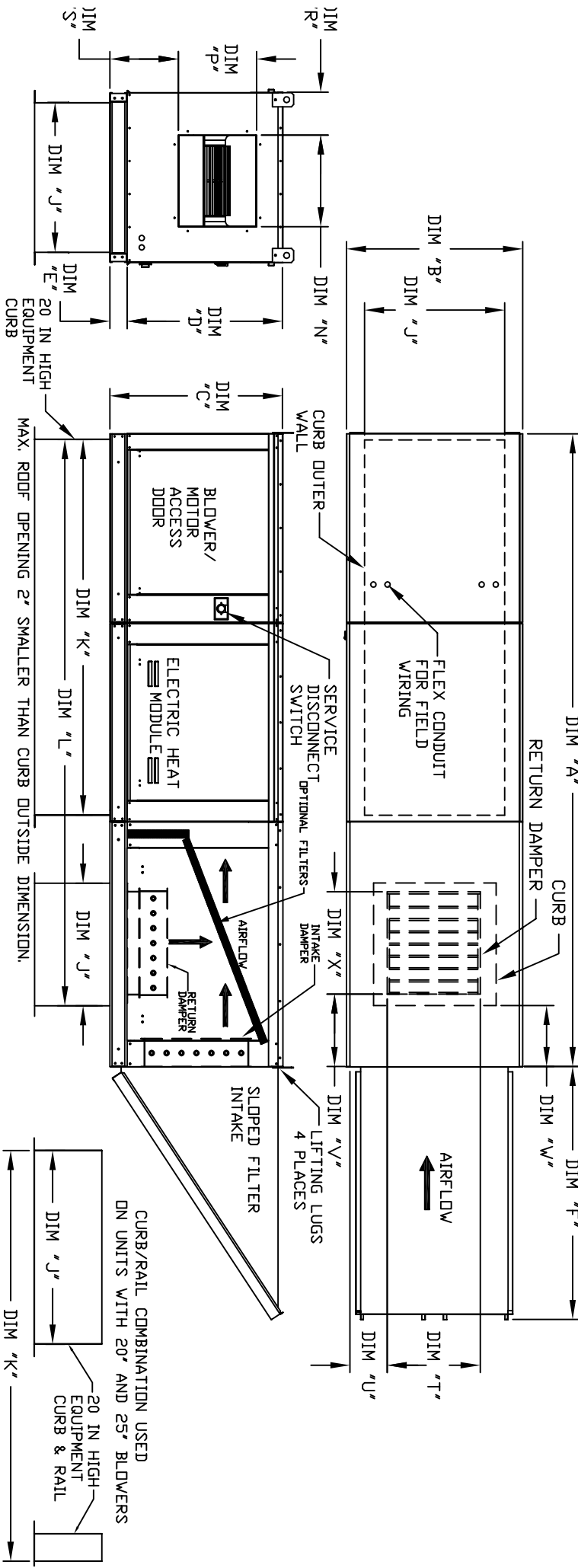


MODULAR OUTDOOR SIDE DISCHARGE ELECTRIC HEATER WITH MIXING BOX AND INTAKE HOOD

JHBEHSAH  
REV. A/S 9/22/2010



ALL DIMENSIONS ARE NOMINAL AND GIVEN IN INCHES.

MODEL	WEIGHT	UNIT DIMENSIONS										CURB				DISCHARGE OPENING				RETURN DAMPER OPENING			
		A	B	C	D	E	F	J	K	L	N	P	R	S	T	U	V	W	X				
E1-G10	705 LBS	116-5/8	27-3/8	29-3/4	26-1/16	3-3/4	44-3/8	21	71	102-7/16	13-1/4	11-1/2	6-3/8	11-7/8	14	8	14	12-1/2	18				
E2-G15	1020 LBS	124-5/8	37-3/8	36-3/4	33-1/16	3-3/4	53-5/8	31	79	115-7/16	18-3/4	16	8-5/8	14-1/16	22-3/4	8	11	7-1/2	24				
E3-G18	1255 LBS	129-5/8	41-3/8	43-3/8	38-1/16	5-1/4	51-5/8	35	84	123-7/16	22	19	9	17-7/8	28	8	7	4-1/2	30				
E4-920	2130 LBS	172-13/16	48-7/16	51-3/8	46-1/8	5-1/4	76-3/8	42	115-3/16	163-3/16	24-7/8	24-7/8	11-1/16	19-1/8	33	10	11	8	36				
E5-925	2745 LBS	182-13/16	59-3/16	58-3/8	53-1/8	5-1/4	71-3/8	52-3/4	125-3/16	179-15/16	31-3/8	31-3/8	13-3/16	21-9/16	43	10	6-1/2	1-1/4	43				

UNIT INFORMATION

MODEL	FILTER SIZE & QTY	MAX. FILTER VELOCITY
E1-G10	16"x20"x2" (3)	@3600 CFM = 686 FPM
E2-G15	20"x25"x2" (3)	@6500 CFM = 754 FPM
E3-G18	16"x20"x2" (6)	@8000 CFM = 762 FPM
E4-920	16"x20"x2" (10)	@13000 CFM = 743 FPM
E5-925	20"x25"x2" (8)	@22000 CFM = 954 FPM

MODEL	FILTER SIZE & QTY
E1-G10	10"x16"x2" (5)
E2-G15	20"x25"x2" (2), 16"x25"x2" (1)
E3-G18	15"x20"x2" (4), 15"x15"x2" (2)
E4-920	18"x25"x2" (4), 16"x20"x2" (2)
E5-925	14.5"x18"x2" (12)