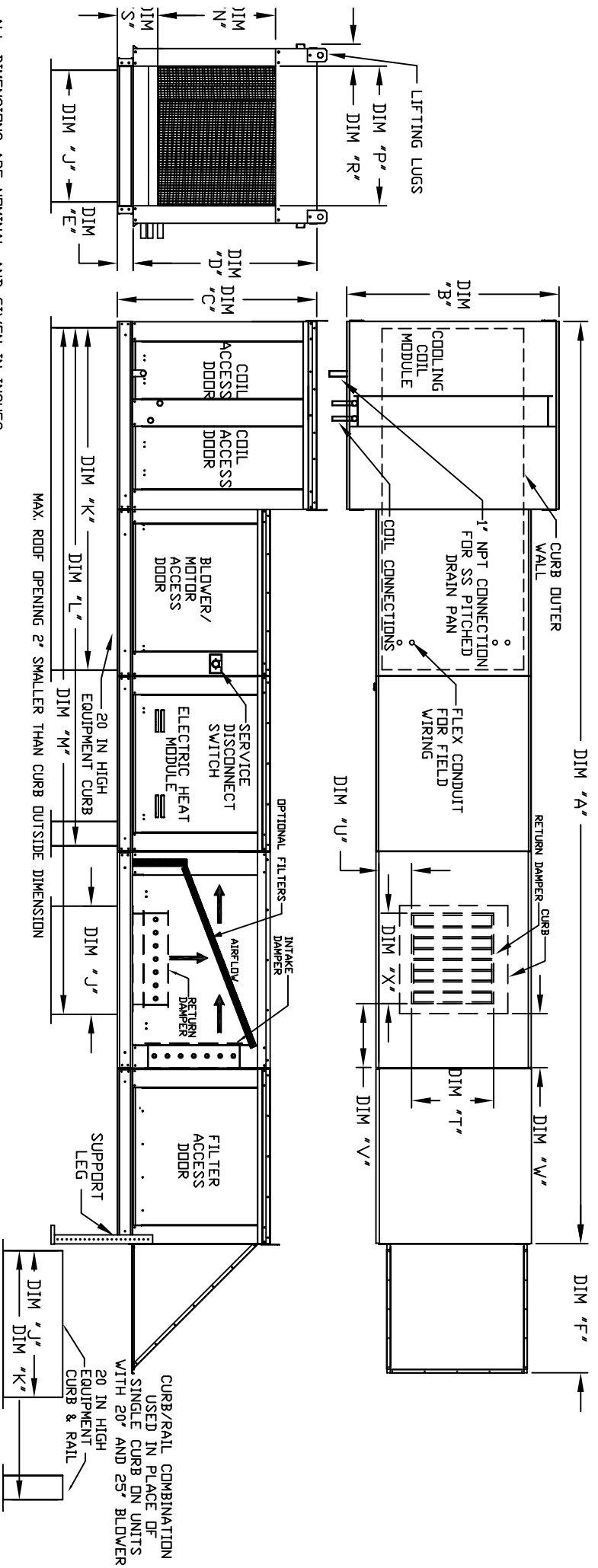


MODULAR OUTDOOR SIDE DISCHARGE ELECTRIC HEATER WITH COOLING COIL, MIXING BOX, V-BANK AND SCREEN INTAKE

SYBMBECSANCC
REV NO 11/28/2011



ALL DIMENSIONS ARE NOMINAL AND GIVEN IN INCHES.

MODEL	WEIGHT	UNIT DIMENSIONS																		
		A	B	C	D	E	F	J	K	L	M	N	P	R	S	T	U	V	X	
E1-G10	1215 LBS	191-1/8	39-3/8	42-3/4	39	3-3/4	22-3/8	21	71	113-1/4	144-11/16	17-1/2	16	11	5-3/4	14	8	14	12-1/2	18
E2-G15	1670 LBS	199-1/8	49-3/8	47-3/4	44	3-3/4	30-5/16	31	79	121-1/4	157-11/16	29-3/4	22-3/4	12-5/8	5-3/4	22-3/4	8	11	7-1/2	24
E3-G18	2025 LBS	210-1/8	54-3/8	56-3/8	51-1/8	5-1/4	34-3/16	35	84	126-1/4	165-11/16	29-5/8	30	11-1/2	7-3/8	28	8	7	4-1/2	30
E4-920	3225 LBS	262-1/2	60-7/16	64-3/8	59-1/8	5-1/4	47-1/4	42	115-3/16	169-1/2	211-1/2	36-3/4	34	12-1/2	7-3/8	33	10	11	8	36
E5-925	4085 LBS	272-1/2	79-7/16	68-7/16	63-3/16	5-1/4	49-5/8	52-3/4	125-3/16	179-1/2	234-1/4	45-1/4	43	17-1/2	7-3/8	43	10	16-1/2	1-1/4	43

UNIT INFORMATION

MODEL	TONNAGE RANGE		FILTER SIZE & QTY		MAX. FILTER VELOCITY
	MIN	MAX			
E1-G10	3 Ton	12.5 Ton	20"x25"x2" (3)		@3600 CFM = 418 FPM
E2-G15	5 Ton	20 Ton	16"x20"x2" (8)		@6500 CFM = 464 FPM
E3-G18	10 Ton	25 Ton	20"x25"x2" (8)		@8000 CFM = 348 FPM
E4-920	20 Ton	40 Ton	16"x20"x2" (15)	@13000 CFM = 495 FPM	
E5-925	30 Ton	50 Ton	20"x25"x2" (12)	@22000 CFM = 638 FPM	

MODEL	OPTIONAL MIXING BOX FILTERS	
	MIN	MAX
E1-G10	10"x16"x2" (3)	
E2-G15	20"x25"x2" (2)	16"x25"x2" (1)
E3-G18	15"x20"x2" (4)	15"x15"x2" (2)
E4-920	18"x25"x2" (4)	16"x20"x2" (2)
E5-925	14"5"x19"x2" (12)	

MAX. ROOF OPENING 2' SMALLER THAN CURB OUTSIDE DIMENSION

CURB/RAIL COMBINATION USED IN PLACE OF SINGLE CURB ON UNITS WITH 20' AND 25' BLOWER