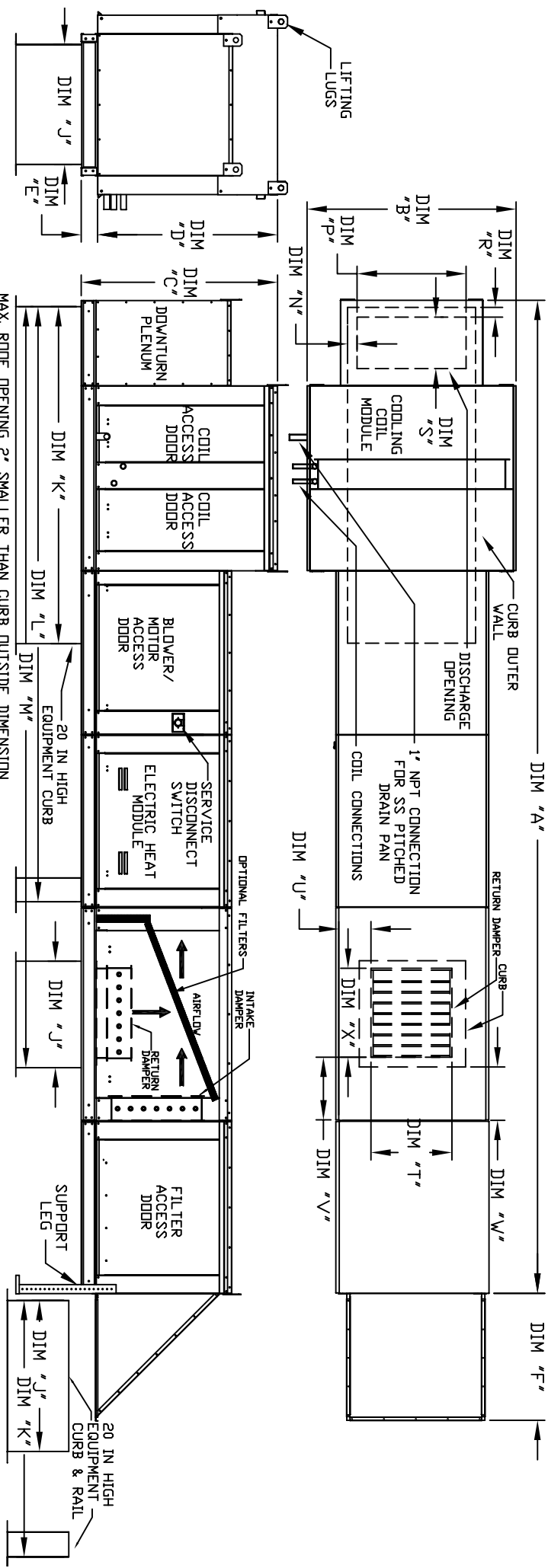


MODULAR OUTDOOR DOWN DISCHARGE ELECTRIC HEATER WITH COOLING COIL, MIXING BOX, V-BANK AND SCREEN INTAKE

STV/BNSH/ACCI
REV#0 11/28/20



ALL DIMENSIONS ARE NOMINAL AND GIVEN IN INCHES.

MODEL	WEIGHT	UNIT DIMENSIONS																		
		A	B	C	D	E	F	J	K	L	M	N	P	R	S	T	U	V	X	
E1-G10	1135 LBS	209-1/2	39-3/8	42-3/4	39	3-3/4	22-3/8	21	71	131-5/8	163-5/16	3-9/16	13-7/8	1-13/16	11-1/2	14	8	14	12-1/2	18
E2-G15	1555 LBS	223-1/2	49-3/8	47-3/4	44	3-3/4	30-5/16	31	79	145-5/8	182-5/16	4-5/16	22-3/8	1-9/16	18	22-3/4	8	11	7-1/2	24
E3-G18	1885 LBS	234-1/2	54-3/8	56-3/8	51-1/8	5-1/4	34-3/16	35	84	150-5/8	190-1/4	5-5/16	22-3/8	1-1/2	18	28	8	7	4-1/2	30
E4-920	3035 LBS	292-7/8	60-7/16	64-3/8	59-1/8	5-1/4	47-1/4	42	115-3/16	199-7/8	248-1/16	5-1/4	31-1/2	1-13/16	23-1/2	33	10	11	8	36
E5-925	3855 LBS	302-7/8	79-7/16	68-7/16	63-3/16	5-1/4	49-5/8	52-3/4	125-3/16	209-7/8	264-13/16	10-5/8	31-1/2	1-13/16	23-1/2	43	10	10	6-1/2	43

MODEL	TONNAGE RANGE		FILTERS		OPTIONAL MIXING BOX FILTERS	
	MIN	MAX	FILTER SIZE & QTY	MAX. FILTER VELOCITY	FILTER SIZE & QTY	
E1-G10	3 Ton	12.5 Ton	20"x25"x2" (3)	@3600 CFM = 418 FPM	10"x16"x2" (5)	
E2-G15	5 Ton	20 Ton	16"x20"x2" (8)	@6500 CFM = 464 FPM	20"x25"x2" (2), 16"x25"x2" (1)	
E3-G18	10 Ton	25 Ton	20"x25"x2" (8)	@8000 CFM = 348 FPM	15"x20"x2" (4), 15"x15"x2" (2)	
E4-920	20 Ton	40 Ton	16"x20"x2" (15)	@13000 CFM = 495 FPM	18"x25"x2" (4), 16"x20"x2" (2)	
E5-925	30 Ton	50 Ton	20"x25"x2" (12)	@22000 CFM = 638 FPM	14"x19"x2" (12)	

CURB/RAIL COMBINATION
USED IN PLACE OF
SINGLE CURB ON UNITS
WITH 20" AND 25" BLOWERS