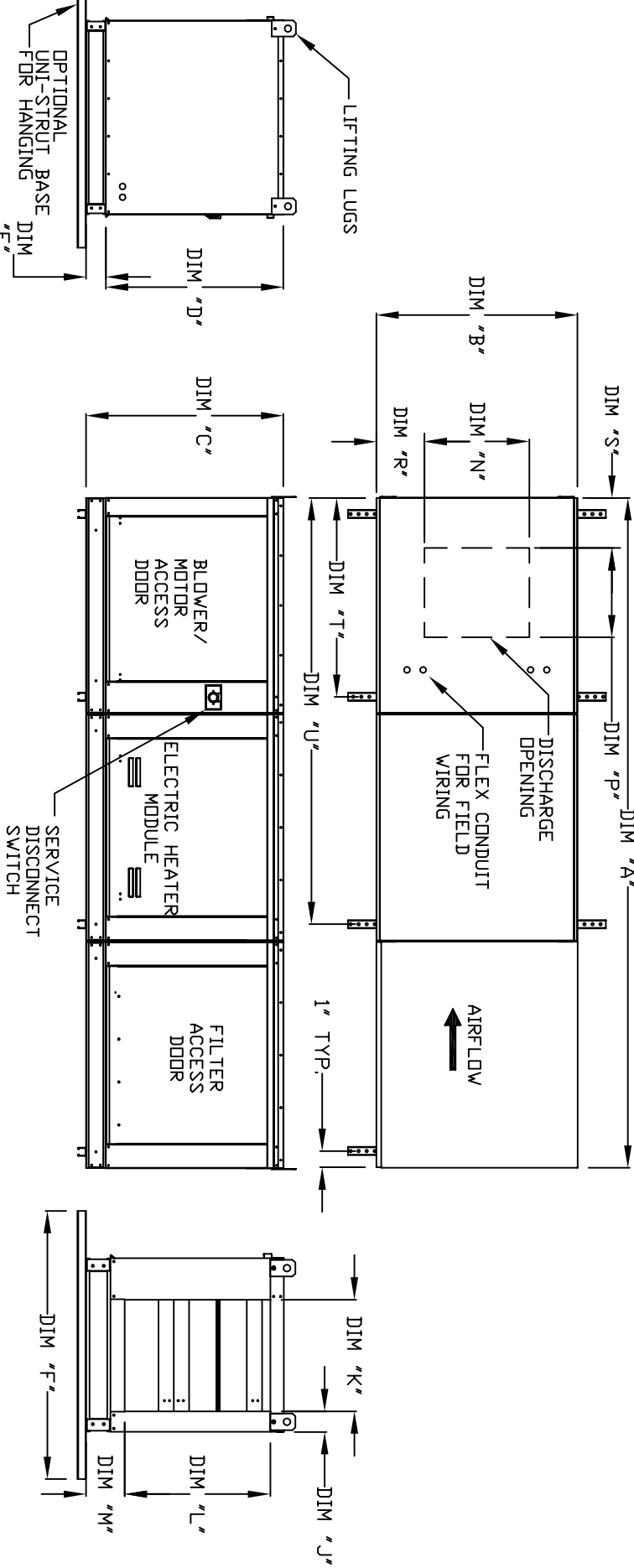


# MODULAR INDOOR DOWN DISCHARGE ELECTRIC HEATER WITH V-BANK



ALL DIMENSIONS ARE NOMINAL AND GIVEN IN INCHES.

MODEL	WEIGHT	UNIT DIMENSIONS										INTAKE OPENING							DISCHARGE OPENING				
		A	B	C	D	E	F	J	K	L	M	N	P	R	S	T	U						
E1-G10	600 LBS	106-5/8	27-3/8	29-3/4	26-1/16	3-3/4	36	3-1/8	16-3/4	21-7/8	5-3/4	13-1/4	11-1/2	6-3/8	7-1/4	31-1/8	73-1/4						
E2-G15	875 LBS	114-5/8	37-3/8	36-3/4	33-1/16	3-3/4	48	5-1/8	24-3/4	28-7/8	5-3/4	18-3/4	16	8-5/8	10	39-1/8	81-1/4						
E3-G18	1050 LBS	125-5/8	41-3/8	43-3/8	38-1/16	5-1/4	60	4-5/8	29-1/4	33-7/8	7-1/2	22	19	9	44-1/8	86-1/4							
E4-920	1680 LBS	153-7/8	48-7/16	51-3/8	46-1/8	5-1/4	60	4-5/8	36-1/4	41-7/8	7-1/2	24-7/8	24-7/8	11-1/16	12-1/4	63-3/16	117-3/8						
E5-925	2240 LBS	163-7/8	59-3/16	58-3/8	53-1/8	5-1/4	72	4-5/8	47	48-7/8	7-1/2	31-3/8	31-3/8	13-3/16	14-1/2	73-3/16	127-3/8						

### UNIT INFORMATION:

MODEL	FILTER SIZE & QTY	MAX. FILTER VELOCITY
E1-G10	20"x25"x2" (3)	@3600 CFM = 418 FPM
E2-G15	16"x20"x2" (8)	@6500 CFM = 464 FPM
E3-G18	20"x25"x2" (8)	@8000 CFM = 348 FPM
E4-920	16"x20"x2" (15)	@13000 CFM = 495 FPM
E5-925	20"x25"x2" (12)	@22000 CFM = 638 FPM