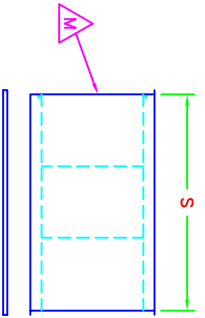
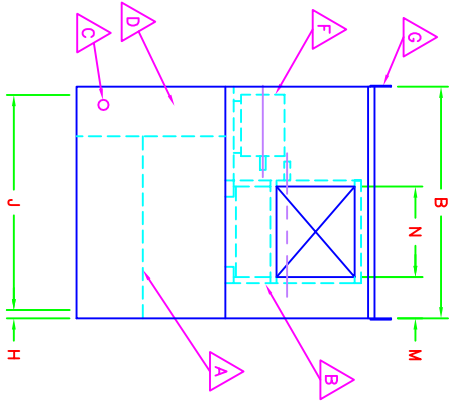
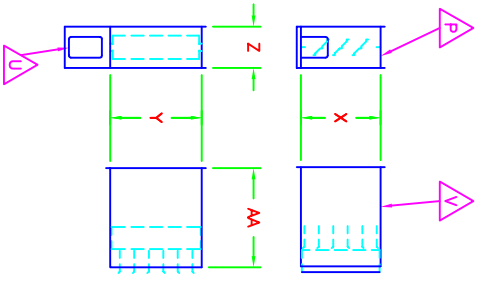
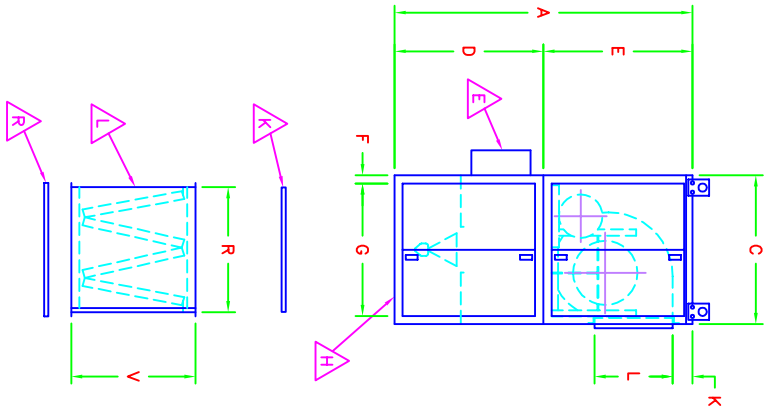


CASING	A	B	C	D	E	F	G	H	J	K	L	M	N	R	S	V	W	X	Y	Z	AA	F.A. FILTER CAPACITY
10	70	50	36	-	-	1.25	33.5	1.25	47.5	9	11.5	12.75	13.25	29.25	45.50	32	-	19	19	10	24	(4)20"x25"
12	70	50	36	-	-	1.25	33.5	1.25	47.5	6.25	13.75	12	16	29.25	45.50	32	-	19	19	10	24	(4)20"x25"
15	70	50	36	-	-	1.25	33.5	1.25	47.5	2.25	16.25	10.25	19	29.25	45.50	32	-	19	19	10	24	(4)20"x25"
18	82	65	50	-	-	1.25	47.38	1.25	62.38	10.50	19.13	11.25	22.00	43.25	61.50	32	-	19.38	22.38	10	24	(12)20"x25"
20	82	65	50	-	-	1.25	47.38	1.25	62.38	3.75	25	11.25	22.75	43.25	61.50	32	-	25.25	23.25	10	24	(12)20"x25"
22	100	80	50	50	50	1.25	47.38	1.25	77.38	8.75	27.5	15	27.5	43.25	76.50	32	-	27.75	27.75	10	24	(12)20"x25" & (4)16"x25"
25	100	80	50	50	50	1.25	47.38	1.25	77.38	3.50	31.5	15	31.5	43.25	76.50	32	-	31.75	31.75	10	24	(12)20"x25" & (4)16"x25"
27	110	88	60	50	60	1.75	56.5	1.75	84.5	8.50	34.5	16.25	34.5	53.25	83.5	32	-	34.75	34.75	10	24	(20)16"x25" (5)20"x25"
30	110	88	60	50	60	1.75	56.5	1.75	84.5	4.25	37	16.25	37	53.25	83.5	32	-	37.25	37.25	10	24	(20)16"x25" (5)20"x25"
33	128	112	70	58	70	1.75	66.5	1.75	108.5	10.44	43.25	19.75	39.81	63.63	107.25	32	-	43.50	40.06	10	24	(15)16"x25" (15)20"x25"
36	128	112	70	58	70	1.75	66.5	1.75	108.5	10.44	43.25	19.75	42.81	63.63	107.25	32	-	43.50	43.06	10	24	(15)16"x25" (15)20"x25"



- ▲ A BURNER PROFILE
- ▲ B FC DWD BLOWER
- ▲ C GAS CONNECTION
- ▲ D ELEC./MANIFOLD CONTROLS VESTIBULE
- ▲ E MAIN DISCONNECT SWITCH
- ▲ F SUPPLY FAN BLOWER MOTOR
- ▲ G REMOVABLE LIFTING LUG
- ▲ H FRESH AIR INTAKE OPENING
- ▲ K FRESH AIR OPENING INLET SCREEN
- ▲ L FRESH AIR INTAKE FILTER
- ▲ M FRESH AIR INTAKE FILTER SERVICE DOOR
- ▲ P DISCHARGE DAMPER
- ▲ R FRESH AIR FILTER INLET SCREEN
- ▲ U DAMPER MOTOR
- ▲ V DISCHARGE DIFFUSER

NOTES:

- 1" CONNECTION FLANGES SUPPLIED AROUND ALL OPENINGS
- MODEL 222/5 IS BUILT AS A SPLIT UNIT
- REAR ACCESS DOORS PROVIDED ON MODEL 22/25
- EQUIPMENT SUPPORT RECOMMENDED UNDER FRESH AIR INTAKE FILTER ON MODEL 22/25
- DISCHARGE DIFFUSER SUPPLIED WITH ADJUSTABLE BLADES

**RUPP AIR**  
MANAGEMENT SYSTEMS

DRAWING PART NUMBER: 30100052

DRAWN BY: TKL  
DATE: 09/19/00

APPROVED BY: \_\_\_\_\_  
DATE: \_\_\_\_\_

MATERIAL: \_\_\_\_\_  
SCALE: 1 to 1

DO NOT SCALE DRAWING USE DIMENSIONS SHOWN  
ALL DIMENSIONS ARE IN INCHES UNLESS OTHERWISE SPECIFIED

REV	TITLE	REVISION DESCRIPTION

CFA-10 THRU 36  
ARRANGEMENT V2 SIDE DISCHARGE

REVISIONS APPROVED: 25000100

ECH NO: \_\_\_\_\_ DWG: \_\_\_\_\_ DATE: \_\_\_\_\_

TOLERANCES:  
2 PLCS ±.03  
3 PLCS ±.015