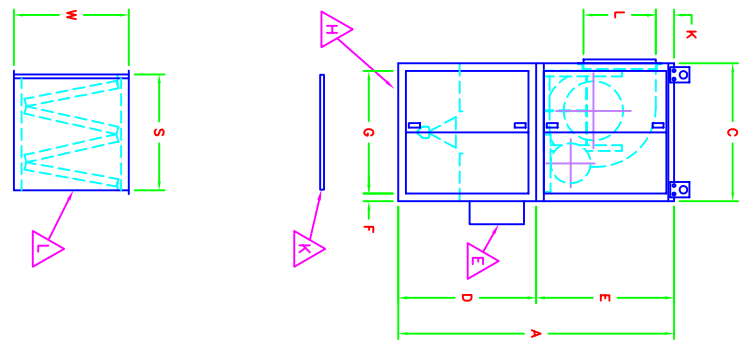
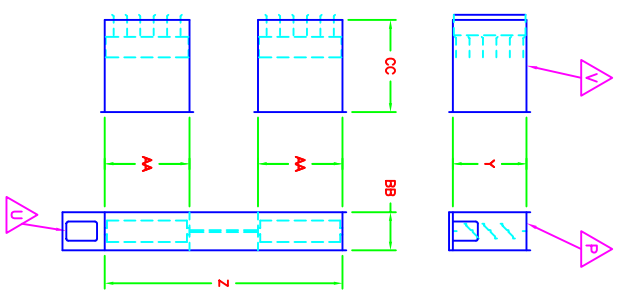
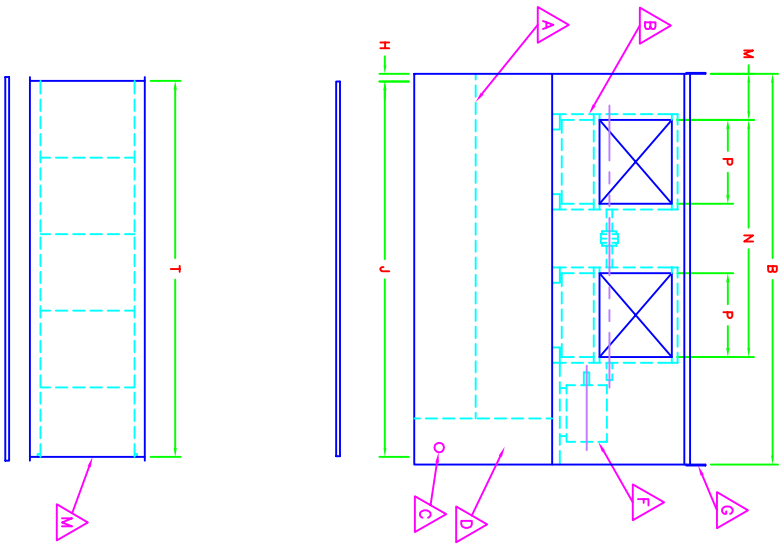


CASING	A	B	C	D	E	F	G	H	J	K	L	M	N	P	S	T	W	X	Y	Z	AA	BB	CC	F.A. FILTER CAPACITY
222	100	146	50	50	50	1.25	47.38	1.25	143.38	8.75	27.25	14.75	77.00	27.00	43.25	142.50	32	-	27.75	77.25	27.25	10	24	(16)20"x25"&(16)16"x25"
225	100	146	50	50	50	1.25	47.38	1.25	143.38	3.5	31.50	14.75	88.00	31.50	43.25	142.50	32	-	31.75	88.25	31.75	10	24	(16)20"x25"&(16)16"x25"
227	110	156	60	60	60	1.75	56.5	1.75	152.5	9	34.5	16.25	96	34.5	53.25	151.5	32	-	34.75	96.25	34.75	10	24	(30)20"x25"&(10)16"x25"
230	110	156	60	60	60	1.75	56.5	1.75	152.5	4.5	37	16.25	104	37	53.25	151.5	32	-	37.25	104.25	37.25	10	24	(30)20"x25"&(10)16"x25"
233	128	191	70	58	70	1.75	66.50	1.75	187.50	10.50	43.25	19.75	116.00	39.81	63.63	186.13	32	-	43.50	116.25	40.06	10	24	(20)16"x25" & (30)20"x25"
236	128	191	70	58	70	1.75	66.50	1.75	187.50	10.50	43.25	19.75	122.00	42.81	63.63	186.13	32	-	43.50	122.25	43.06	10	24	(20)16"x25" & (30)20"x25"



- A** BURNER PROFILE
- B** TWIN FC DWDI BLOWERS
- C** GAS CONNECTION
- D** ELEC./MANIFOLD CONTROLS VESTIBULE
- E** MAIN DISCONNECT SWITCH
- F** SUPPLY FAN BLOWER MOTOR
- G** REMOVABLE LIFTING LUG
- H** FRESH AIR INTAKE OPENING
- K** FRESH AIR OPENING INLET SCREEN
- L** FRESH AIR INTAKE FILTER
- M** FRESH AIR INTAKE FILTER SERVICE DOOR
- P** DISCHARGE DAMPER
- R** FRESH AIR FILTER INLET SCREEN
- U** DAMPER MOTOR
- V** DISCHARGE DIFFUSER

NOTES:
 -1" CONNECTION FLANGES SUPPLIED AROUND ALL OPENINGS
 -MODEL 215 BUILT AS SINGLE PIECE UNIT
 -REAR ACCESS DOORS PROVIDED ON ALL SPLIT MODELS
 -EQUIPMENT SUPPORT RECOMMENDED UNDER FRESH AIR INTAKE FILTER
 -ON MODELS 225 AND LARGER
 -SERVICE DOORS SUPPLIED ON BOTH SIDES OF FILTER SECTION ON MODELS 233 & 236
 -DISCHARGE DIFFUSER SUPPLIED WITH ADJUSTABLE BLADES

SCALE: 1 to 1

DO NOT SCALE DRAWING USE DIMENSIONS SHOWN
 ALL DIMENSIONS ARE IN INCHES UNLESS OTHERWISE SPECIFIED

DRAWN BY: TKL
 DATE: 02/10/00

APPROVED BY: _____
 DATE: _____

REVISIONS

REV	TITLE	REVISION DESCRIPTION

ECN NO: _____ DWG: _____ DATE: _____

TOLERANCES
 2 PLCS ±.03
 3 PLCS ±.015

CFA-222 THRU 236
 ARRANGEMENT V3 SIDE DISCHARGE

REVISION/ISSUE NUMBER: 30100063