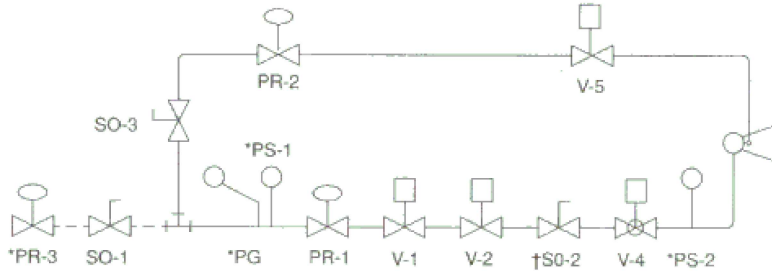
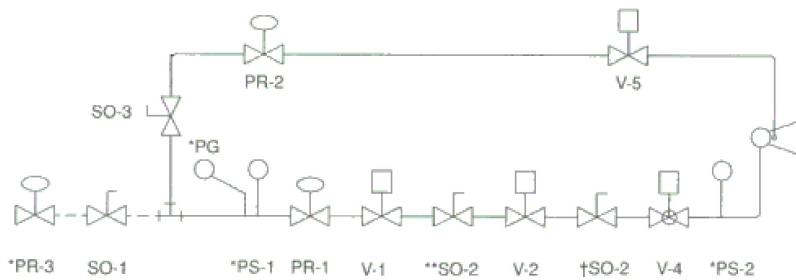


# Gas-Manifold Arrangements

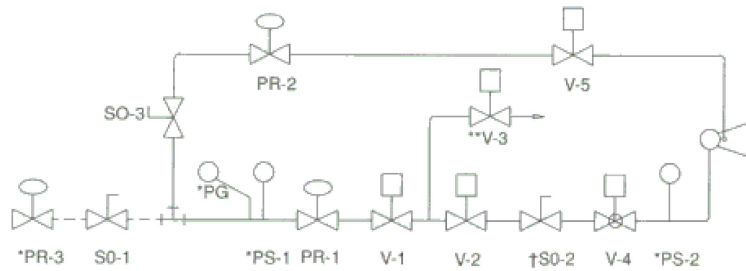
## Standard Manifold



## FM Gas Manifold - Meets MN State Gas Code Requirements



## FIA/IRI Manifold



- \* optional
- \*\* if over 400 MBH
- † ETL only
- Factory piping
- - - Field piping supplied by others

A standard manifold has the necessary gas valves and safety components for most burner applications. Select the proper manifold for projects requiring specific insurance requirements. Manifold size is based on gas pressure available and BTU input. Basic manifold supplied with two solenoid gas valves. Leak test valves can be included.

Symbols			
PG	pressure gauge	V-1	main-gas valve no. 1
PR-1	main-gas regulator	V-2	main-gas valve no. 2
PR-2	pilot-gas regulator	V-3	normally open vent valve
PR-3	high-gas regulator	V-4	modulating valve
SO-1	main-gas shutoff valve	V-5	pilot gas valve
SO-2	leak-test valve	PS-1	low-gas pressure switch
SO-3	pilot-gas shutoff valve	PS-2	high-gas pressure switch