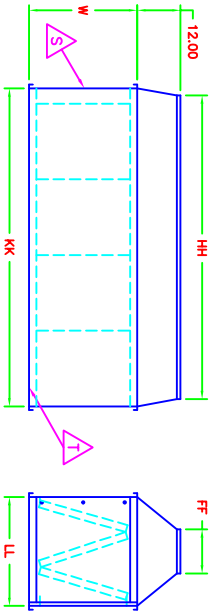
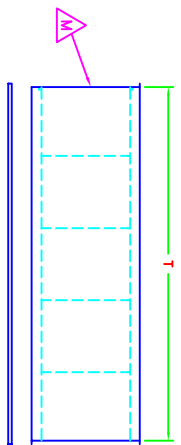
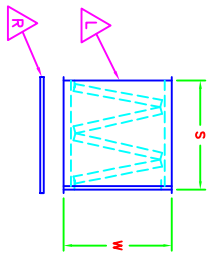
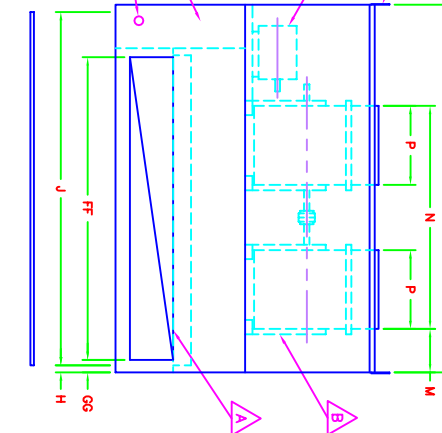
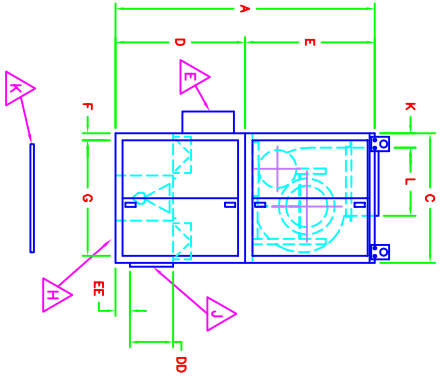
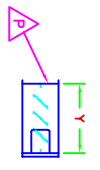


CASING	A	B	C	D	E	F	G	H	J	K	L	M	N	P	S	T	W	X	Y	Z	AA	BB	DD	EE	FF	GG	HH	JJ	KK	LL	F.A. FILTER CAPACITY	R.A. FILTER CAPACITY
222	100	146	50	50	50	1.25	47.38	1.25	143.38	8.75	27.25	14.75	77.00	27.00	43.25	142.5	32	-	27.75	77.25	27.25	10	13.75	3.75	123.75	1	14	124	142.5	43.25	(16)20"x25"&(6)16"x25"	(16)20"x25"&(16)16"x25"
225	100	146	50	50	50	1.25	47.38	1.25	143.38	3.5	31.5	14.75	88.00	31.50	43.25	142.5	32	-	31.75	88.25	31.75	10	13.75	3.75	123.75	1	14	124	142.5	43.25	(16)20"x25"&(16)16"x25"	(16)20"x25"&(16)16"x25"
227	110	156	60	50	60	1.75	56.5	1.75	152.5	9	34.5	16.25	96	34.5	53.25	151.5	32	-	34.75	96.25	34.75	10	15.75	1.75	133.5	1	14	124	142.5	(30)20"x25"&(10)16"x25"	(30)20"x25"&(10)16"x25"	
230	110	156	60	50	60	1.75	56.5	1.75	152.5	4.5	37	16.25	104	37	53.25	151.5	32	-	37.25	104.25	37.25	10	15.75	1.75	133.5	1	14	124	142.5	53.25	(30)20"x25"&(10)16"x25"	(30)20"x25"&(10)16"x25"
233	128	191	70	58	70	1.75	66.5	1.75	187.5	10.5	43.25	19.75	116	39.81	63.63	186.13	32	-	43.50	116.25	40.06	10	21.25	5.75	157.75	6.68	21.5	158	186.25	65.75	(20) 16x25, (30) 20x25	(20) 16x25, (30) 20x25
236	128	191	70	58	70	1.75	66.5	1.75	187.5	10.5	43.25	19.75	122	42.81	63.63	186.13	32	-	43.50	122.25	43.06	10	21.25	5.75	157.75	6.68	21.5	158	186.25	65.75	(20) 16x25, (30) 20x25	(20) 16x25, (30) 20x25



- ▲ A 80/20 BURNER PROFILE
- ▲ B TWIN FC DWDI BLOWERS
- ▲ C GAS CONNECTION
- ▲ D ELEC./MANIFOLD CONTROLS VESTIBULE
- ▲ E MAIN DISCONNECT SWITCH
- ▲ F SUPPLY FAN BLOWER MOTOR
- ▲ G REMOVABLE LIFTING LUG
- ▲ H FRESH AIR INTAKE OPENING
- ▲ J RETURN AIR INTAKE OPENING
- ▲ K FRESH AIR OPENING INLET SCREEN
- ▲ L FRESH AIR INTAKE FILTER
- ▲ M FRESH AIR INTAKE FILTER SERVICE DOOR
- ▲ P DISCHARGE DAMPER
- ▲ R FRESH AIR FILTER INLET SCREEN
- ▲ S RETURN AIR FILTER
- ▲ T RETURN AIR FILTER INTAKE SCREEN
- ▲ U DAMPER MOTOR

NOTES:  
 -1" CONNECTION FLANGES SUPPLIED AROUND ALL OPENINGS  
 -REAR ACCESS DOORS PROVIDED ON ALL SPLIT MODELS  
 -EQUIPMENT SUPPORT RECOMMENDED UNDER FRESH AIR INTAKE FILTER  
 -ON MODELS 225 AND LARGER  
 -SERVICE DOORS SUPPLIED ON BOTH SIDES OF FILTER SECTION ON MODELS 233 & 236  
 -EQUIPMENT SUPPORT RECOMMENDED UNDER RETURN AIR INTAKE FILTER

30100081

CFAM-222 THRU 236  
ARRANGEMENT V1 UP DISCHARGE

18000102

DRAWN BY	TKL	DATE	02/10/00	APPROVED BY	
MATERIAL		SCALE	1 to 1	DATE	

DO NOT SCALE DRAWING USE DIMENSIONS SHOWN  
 ALL DIMENSIONS ARE IN INCHES UNLESS OTHERWISE SPECIFIED

REVISION DESCRIPTION

REV	TITLE

ECH NO DWG DATE

TOLERANCES

2 PLCS ±.03  
 4 PLCS ±.015